

Excellent Integrated System Limited

Stocking Distributor

Click to view price, real time Inventory, Delivery & Lifecycle Information:

[Phoenix Contact](#)
[3200988](#)

For any questions, you can email us directly:

sales@integrated-circuit.com



Extract from the online catalog

AI-TWIN 2X 1 -10 RD

Order No.: 3200988



<http://eshop.phoenixcontact.de/phoenix/treeViewClick.do?UID=3200988>

Ferrule, Length: 17 mm, Color: red

Commercial data	
EAN	4017918094539
Pack	100 pcs.
Customs tariff	85369010
Weight/Piece	0.000168 KG
Catalog page information	Page 667 (CL-2009)

Product notes

WEEE/RoHS-compliant since:
03/03/2005



<http://www.download.phoenixcontact.com>
 Please note that the data given here has been taken from the online catalog. For comprehensive information and data, please refer to the user documentation. The General Terms and Conditions of Use apply to Internet downloads.

Technical data	
General	
Length (b)	17 mm
Color	red
Material	E-CU
Sleeve length	10 mm
Inner dimension of the insulating collar (d)	3.4 mm

AI-TWIN 2X 1 -10 RD Order No.: 3200988

<http://eshop.phoenixcontact.de/phoenix/treeViewClick.do?UID=3200988>

Ferrule diameter	2.05 mm
Insulating collar thickness	0.3 mm
Sleeve wall thickness	0.15 mm
Dimension d3	5.4 mm

Certificates / Approvals

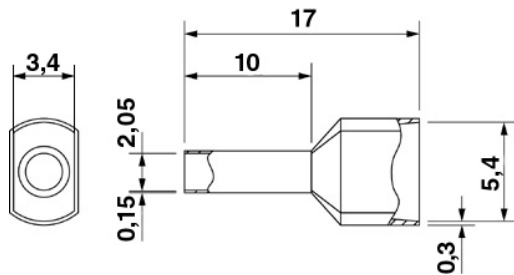


Certification

CSA, UCSA

Diagrams/Drawings

Dimensioned drawing



AI-TWIN 2X 1 -10 RD Order No.: 3200988

<http://eshop.phoenixcontact.de/phoenix/treeViewClick.do?UID=3200988>

Address

PHOENIX CONTACT Inc., USA
586 Fulling Mill Road
Middletown, PA 17057, USA
Phone (800) 888-7388
Fax (717) 944-1625
<http://www.phoenixcon.com>



© 2010 Phoenix Contact
Technical modifications reserved;