

Excellent Integrated System Limited

Stocking Distributor

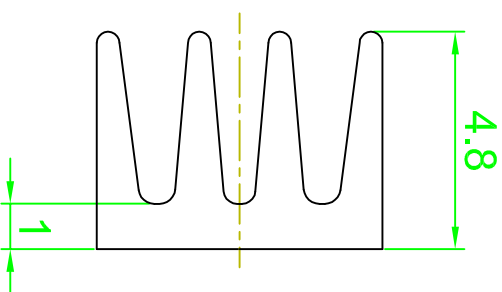
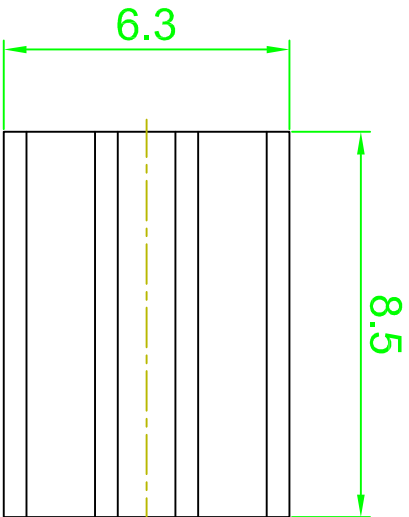
Click to view price, real time Inventory, Delivery & Lifecycle Information:

[ASSMANN WSW Components](#)
[V5618A](#)

For any questions, you can email us directly:

sales@integrated-circuit.com

ROHS COMPLIANT



Oberfläche: schwarz eloxiert
Schnittkanten gratfrei

Allgemeintol
DIN ISO
2768-m-S

Material: AlMgSi 0,5

Scale	1:1					
TOLERANCE						
X.X	±0.40					
X.XX	±0.25					
X.XXX	±0.15					
DIM	TOL					
X°	±3°					
X.X°	±x°	①	Drawn		21.04.09	M. Vaško
Angle	TOL	Id.	Modification	Date		Name

Drawn	Date	Name
Approved	21.04.09	J. Kováč

ASSMANN
WSW/ components

Customer-No.
67724

ASSMANN WSW-No.
V5618A

Drawing-No.

ASS_1576_HS

Replace

rev01

Sheet

1

2

3

4

5

6

7

H

G

F

E

D

C

B

A

1

2

3

4

5

6

7