

## Excellent Integrated System Limited

Stocking Distributor

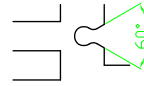
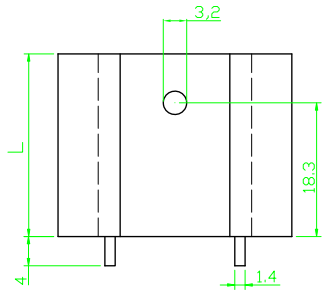
Click to view price, real time Inventory, Delivery & Lifecycle Information:

[ASSMANN WSW Components](#)  
[V5229W](#)

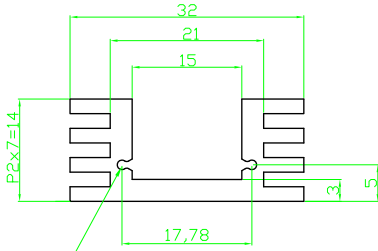
For any questions, you can email us directly:

[sales@integrated-circuit.com](mailto:sales@integrated-circuit.com)

RoHS compliant



(REMARK A)  
S=2:1



(REMARK A)

Notes

Material : AL6063-T5  
Finished : Black Anodized  
UNSPECIFIED R=0.3MM

Option	L	Thermal resistance(K/W)
V5229W	25	12.5
V5229X	37.5	10
V5229Y	50	8.5

Scale	1:1					Date	Name	Customer-No.
TOLERANCE						Drawn	11.08.2009	Dean
						Approved	10.03.2010	Andy
UNIT	±0.2							ASSMANN WSW-No. V5229x
DIM	TOL							Drawing-No. ASS 0871 HS rev02
X,°	±X°	②	Modify drawing layout	10.03.2010	Alex			
X,X°	±X°	①	Drawn	11.08.2009	Dean			
Angle	TOL	Id.	Modification	Date	Name			

1

2

3

4

5

6

7