



**Distributor of TE Connectivity AMP Connectors: Excellent Integrated System Limited**  
Datasheet of 2-147095-5 - Connector Receptacle 50 Position 0.100" (2.54mm) Gold Through Hole

Contact us: [sales@integrated-circuit.com](mailto:sales@integrated-circuit.com) Website: [www.integrated-circuit.com](http://www.integrated-circuit.com)

---

## **Excellent Integrated System Limited**

Stocking Distributor

Click to view price, real time Inventory, Delivery & Lifecycle Information:

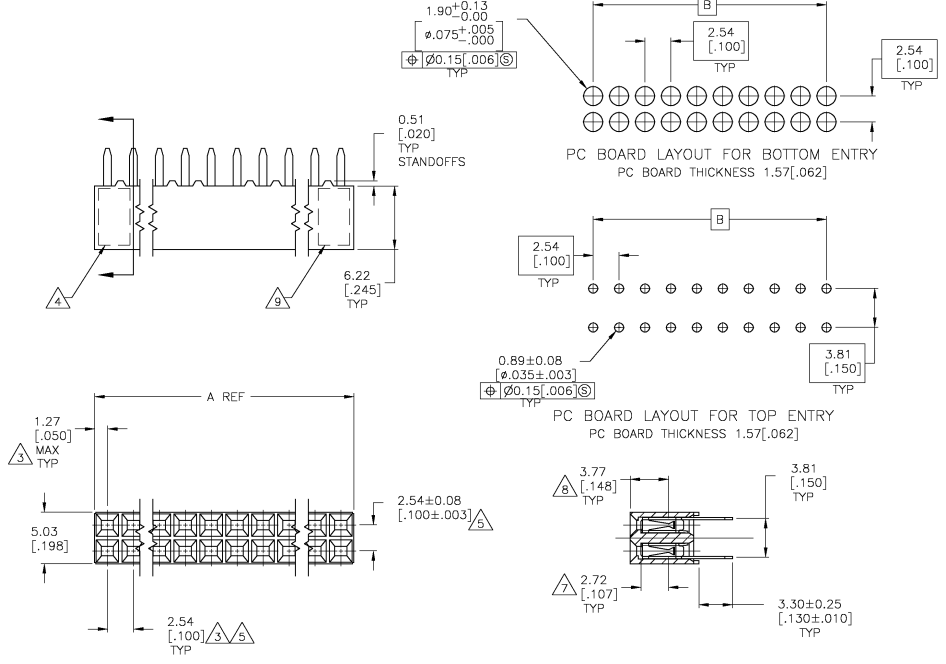
[TE Connectivity AMP Connectors](#)  
[2-147095-5](#)

For any questions, you can email us directly:

[sales@integrated-circuit.com](mailto:sales@integrated-circuit.com)

THIS DRAWING IS UNPUBLISHED. RELEASED FOR PUBLICATION BY TYCO ELECTRONICS CORPORATION. ALL RIGHTS RESERVED.

LOC	DST	REVISIONS					
		F	UR	DESCRIPTION	DATE	DM	APD
AD	00	D		REV PER 0630-0454-03	09CCT03	MB	JO



99.06 [3.900]	101.60 [4.000]	80	4-147095-0
96.52 [3.800]	99.06 [3.900]	78	3-147095-9
93.98 [3.700]	96.52 [3.800]	76	3-147095-8
91.44 [3.600]	93.98 [3.700]	74	3-147095-7
88.90 [3.500]	91.44 [3.600]	72	3-147095-6
86.36 [3.400]	88.90 [3.500]	70	3-147095-5
83.82 [3.300]	86.36 [3.400]	68	3-147095-4
81.28 [3.200]	83.82 [3.300]	66	3-147095-3
78.74 [3.100]	81.28 [3.200]	64	3-147095-2
76.20 [3.000]	78.74 [3.100]	62	3-147095-1
73.66 [2.900]	76.20 [3.000]	60	3-147095-0
71.12 [2.800]	73.66 [2.900]	58	2-147095-9
68.58 [2.700]	71.12 [2.800]	56	2-147095-8
66.04 [2.600]	68.58 [2.700]	54	2-147095-7
63.50 [2.500]	66.04 [2.600]	52	2-147095-6
60.96 [2.400]	63.50 [2.500]	50	2-147095-5
58.42 [2.300]	60.96 [2.400]	48	2-147095-4
55.88 [2.200]	58.42 [2.300]	46	2-147095-3
53.34 [2.100]	55.88 [2.200]	44	2-147095-2
50.80 [2.000]	53.34 [2.100]	42	2-147095-1
48.26 [1.900]	50.80 [2.000]	40	2-147095-0
45.72 [1.800]	48.26 [1.900]	38	1-147095-9
43.18 [1.700]	45.72 [1.800]	36	1-147095-8
40.64 [1.600]	43.18 [1.700]	34	1-147095-7
38.10 [1.500]	40.64 [1.600]	32	1-147095-6
35.56 [1.400]	38.10 [1.500]	30	1-147095-5
33.02 [1.300]	35.56 [1.400]	28	1-147095-4
30.48 [1.200]	33.02 [1.300]	26	1-147095-3
27.94 [1.100]	30.48 [1.200]	24	1-147095-2
25.40 [1.000]	27.94 [1.100]	22	1-147095-1
22.86 [0.900]	25.40 [1.000]	20	1-147095-0
20.32 [0.800]	22.86 [0.900]	18	147095-9
17.78 [0.700]	20.32 [0.800]	16	147095-8
15.24 [0.600]	17.78 [0.700]	14	147095-7
12.70 [0.500]	15.24 [0.600]	12	147095-6
10.16 [0.400]	12.70 [0.500]	10	147095-5
7.62 [0.300]	10.16 [0.400]	8	147095-4
5.08 [0.200]	7.62 [0.300]	6	147095-3
2.54 [0.100]	5.08 [0.200]	4	147095-2
-	2.54 [0.100]	2	147095-1

- △ HOUSING: FLAME RETARDANT, GLASS FILLED, THERMOPLASTIC, COLOR: BLACK. CONTACT: PHOSPHOR BRONZE
- △ CONTACT: DUPLEX PLATED 0.25µm [0.00010] MIN IN CONTACT AREA, 3.81-7.62µm [0.00150-0.00300] BRIGHT TIN-LEAD ON LEADS, ALL OVER 1.27µm [0.00050] NICKEL
- △ THESE DIMENSIONS PERTAIN TO CAVITY CENTERLINES ONLY - NOT TO CONTACT LOCATIONS
- △ PART NUMBER AND DATE CODE ARE MARKED IN APPROXIMATE LOCATION SHOWN.
- △ TOLERANCE IS NON-CUMULATIVE.
- △ 2 POSITION DATE CODE IS MARKED OPPOSITE SIDE OF TYCO LOGO.
- △ POINT-OF-MEASUREMENT DIMENSION FOR PLATING THICKNESS (INSIDE CONTACT BEAM).
- △ POINT-OF-CONTACT DIMENSION.
- △ TYCO TRADEMARK AND CSA LOGO ARE MOLDED INTO HOUSING, THIS LOCATION.
- △ NO PART NUMBER MARKING REQUIRED FOR THIS PART.

THIS DRAWING IS A CONTROLLED DOCUMENT. DW: M. JENNER DRWG0202  
 DSR: J. OLSON DRWG02  
 APD: J. OLSON DRWG02

TYCO Electronics Corporation  
 Harrisburg, PA 17105

RECEPTACLE ASSEMBLY, MOD IV, DOUBLE ROW, DUAL ENTRY, 100X.100CL, VERTICAL MOUNT, AMPMODU

SIZE: A2 CASE CODE: 00779 DRAWING NO: 147095

MATERIAL: 1 FINISH: 2 WEIGHT: -

CUSTOMER DRAWING SCALE: 4:1 SHEET: 1 OF 1 REV: D