

Excellent Integrated System Limited

Stocking Distributor

Click to view price, real time Inventory, Delivery & Lifecycle Information:

[Honeywell Sensing and Productivity Solutions
3HM1](#)

For any questions, you can email us directly:

sales@integrated-circuit.com

MICRO SWITCH

FREERPORT ILLINOIS, U.S.A
 A DIVISION OF HONEYWELL

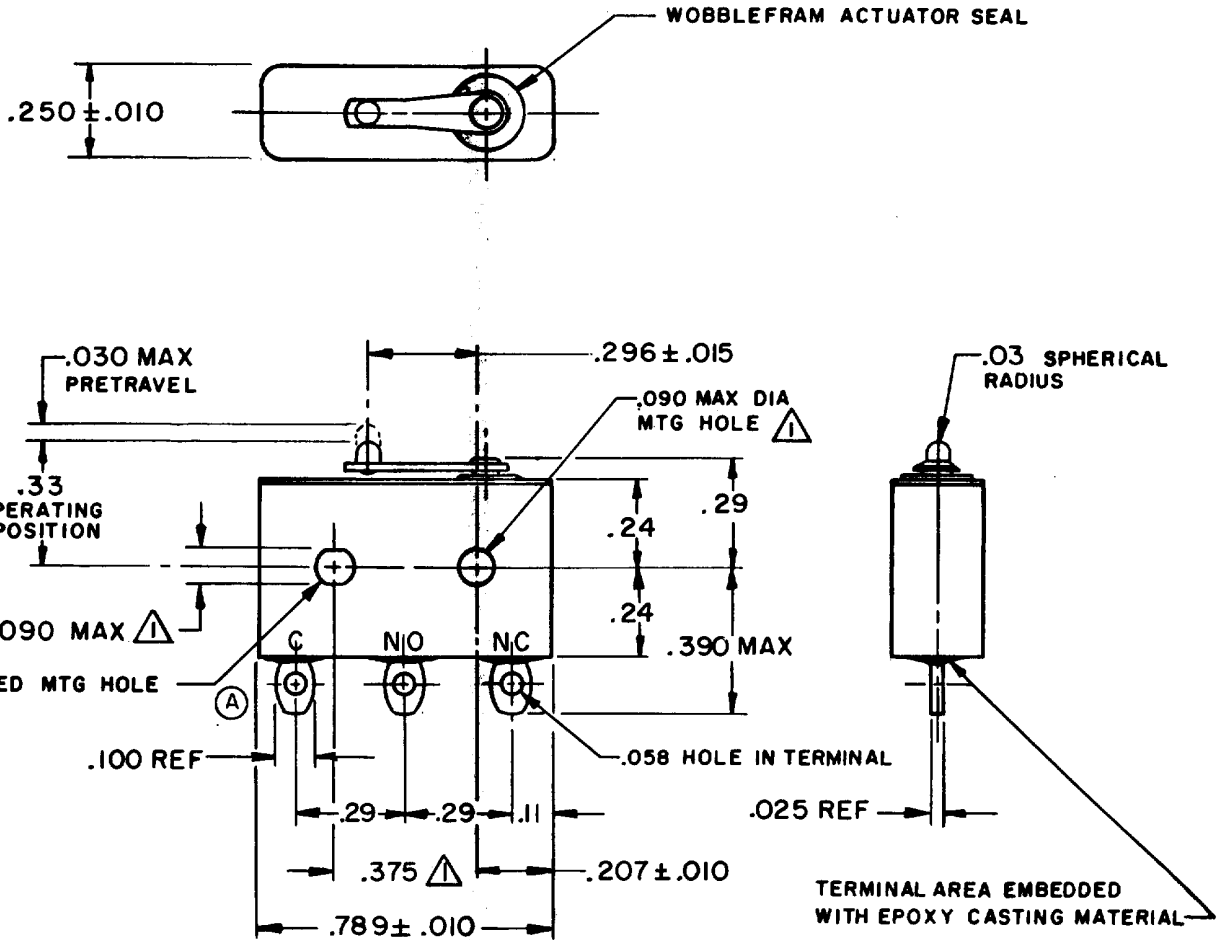
FED. MFG. CODE 91829

SWITCH-BASIC

CATALOG LISTING

3HM1

3HM1
 M
 DRAWING NUMBER
 ISSUE 5
 REVISIONS
 A CO25968 RER 23 JUN 69
 B PR-1143 SRH 17 FEB 70
 C CO-32230 BEN 24 JUL 73
 D CO71228 DAW 1 NOV 91
 CHECK 3 APR 69
 CHECK 3 APR 69
 CHECK 1 APR 69
 DRAWN DAW
 FO-80378-1A



NOTE -

- ▲ MOUNTING HOLES WILL ACCEPT PINS OR SCREWS OF .087 MAX DIA ON .375 ± .002 CENTERS
- 2 - FOR USE IN TEMPERATURE RANGE -300°F TO + 250°F
- 3 - HERMETICALLY SEALED (METAL-TO-METAL, GLASS-TO-METAL)
- 4 - ALL EXPOSED PARTS ARE OF CORROSION RESISTANT MATERIALS
- 5 - TERMINALS ARE TINNED FOR SOLDERING
- 6 - DO NOT APPLY MORE THAN 1 1/2 INCH-POUNDS OF TORQUE WHEN TIGHTENING MOUNTING SCREWS
- 7 - 24K GOLD MOVABLE CONTACT
- 8 - GOLD ALLOY STATIONARY CONTACTS

THIS DRAWING COVERS A PROPRIETARY ITEM AND IS THE PROPERTY OF MICRO SWITCH, A DIVISION OF HONEYWELL. THIS DRAWING IS NOT TO BE COPIED OR USED WITHOUT THE APPROVAL OF MICRO SWITCH.

CHARACTERISTICS

OPERATING FORCE ----- 7 OZ MAX

RELEASE FORCE ----- 1 OZ MIN

DIFFERENTIAL TRAVEL ----- .006 MAX

OVERTRAVEL ----- .003 MIN

ELECTRICAL DATA

CONTACT ARRANGEMENT
 S P D T

28 VDC

INDUCTIVE ----- SEA LEVEL ----- 1/4 AMP
 70,000 FT ----- 1/4 AMP

RESISTIVE ----- SEA LEVEL ----- 1 AMP
 70,000 FT ----- 1 AMP

SCALE 2 TO 1

DO NOT SCALE PRINT

UNLESS OTHERWISE NOTED

DIMENSIONS ARE IN INCHES

TOLERANCES ARE:

ONE PLACE (.0) ±.030
 TWO PLACE (.00) ±.015
 THREE PLACE (.000) ±.005
 ANGLES ±

WEIGHT .014 LB MAX