

Excellent Integrated System Limited

Stocking Distributor

Click to view price, real time Inventory, Delivery & Lifecycle Information:

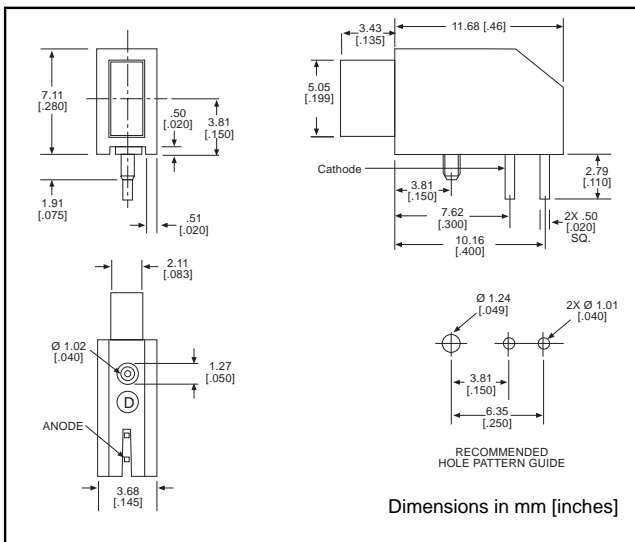
[Dialight](#)
[5660406](#)

For any questions, you can email us directly:
sales@integrated-circuit.com

**2mm x 5mm Rectangular
LED CBI® Circuit Board Indicator**



566-xx06



PART NO.
 566-0206
 566-0306
 566-0406

COLOR
 Green
 Yellow
 Red

Features

- Multiple CBIs form horizontal LED arrays on 3.96mm (0.156") center-lines
- High Contrast, UL 94 V-0 rated, black housing
- Oxygen index: 32%
- Polymer content: PBT, 0.309 g
- Housing stand-offs facilitate PCB cleaning
- Solderability per MIL-STD-202F, method 208F
- LEDs are safe for direct viewing per IEC 825-1, EN-60825-1

Tolerance note: As noted, otherwise:

- LED Protrusion: ±0.04 mm [±0.016]
- CBI Housing: ±0.02mm[±0.008]

5

Typical Operating Characteristics (T_A=25°C)

See LED data sheet for additional information
See Page 5-20 and 5-21 for Reference Only LED Drive Circuit Example
See Page 5-22 for Pin Out

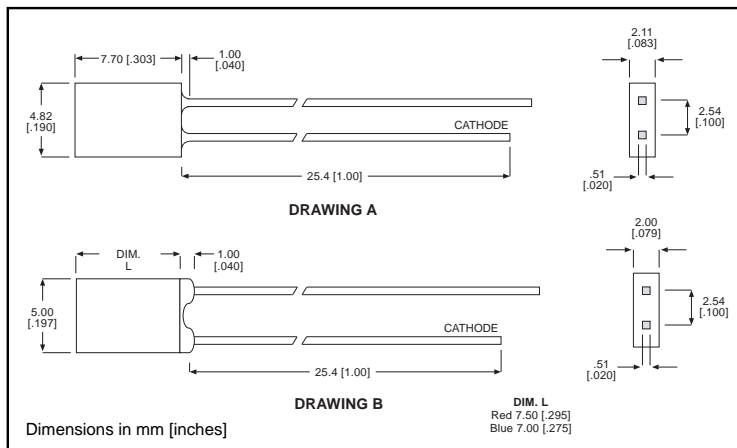
Part Number	Color	Peak Wavelength nm	I _v mcd	V _F Volts	Test Current (mA)	Viewing Angle 2θ _½	LED Data sheet	Page #
566-0206	Green	565	4	2.2	20	110°	521-9332	5-16
566-0306	Yellow	583	3.5	2.1	20	110°	521-9452	5-16
566-0406	Red	635	7.4	2	20	140°	521-9499	5-16

2mm x 5mm Discrete LED

Rectangular
 Tinted, Diffused



521-9332, -9452, -9499, -9718



PART NO.	COLOR	DRAWING
521-9332	Green	A
521-9452	Yellow	A
521-9499	Red	B
521-9718	Blue	B

ABSOLUTE MAXIMUM RATINGS (T _A =25°C)	Green -9332	Yellow -9452	Red -9499	Blue -9718
Power Dissipation (mW)	135	85	100	189
Forward Current (mA)	30	20	30	30
Derating (mA/°C) From 50°C 1. mW/°C From 25°C	.5	.34	.4	.45 ¹
Peak Current (mA) Pulse width = 1 ms *Pulse width = 10 μs	500*	500*	120	180
Operating Temperature (°C)	-20/+100	-55/+100	-55/+100	-25/+75
Storage Temperature (°C)	-55/+100	-55/+100	-55/+100	-25/+100
Soldering Temperature	260°C, 5 seconds, 1.6 mm from case			

Solder Adherence per MIL-STD-202E, Method 208C

OPERATING CHARACTERISTICS (T _A =25°C)		Green -9332	Yellow -9452	Red -9499	Blue -9718
Luminous Intensity (mcd)	Min.	2.6	2.2	3	9
	Typical	4	3.5	7.4	18
Peak Wavelength (nm)	Typical	565	583	635	430
Viewing Angle (2Θ ^{1/2})	Typical	110°	110°	140°	120°
Forward Voltage (V)	Typical	2.2	2.1	2	5.3
	Max.	3	2.6	2.8	6
Reverse Voltage (V), I _R =100μA	Min.	5	5	5	5

Θ¹ is the off axis angle at which the luminous intensity is half the axial luminous intensity