

Excellent Integrated System Limited

Stocking Distributor

Click to view price, real time Inventory, Delivery & Lifecycle Information:

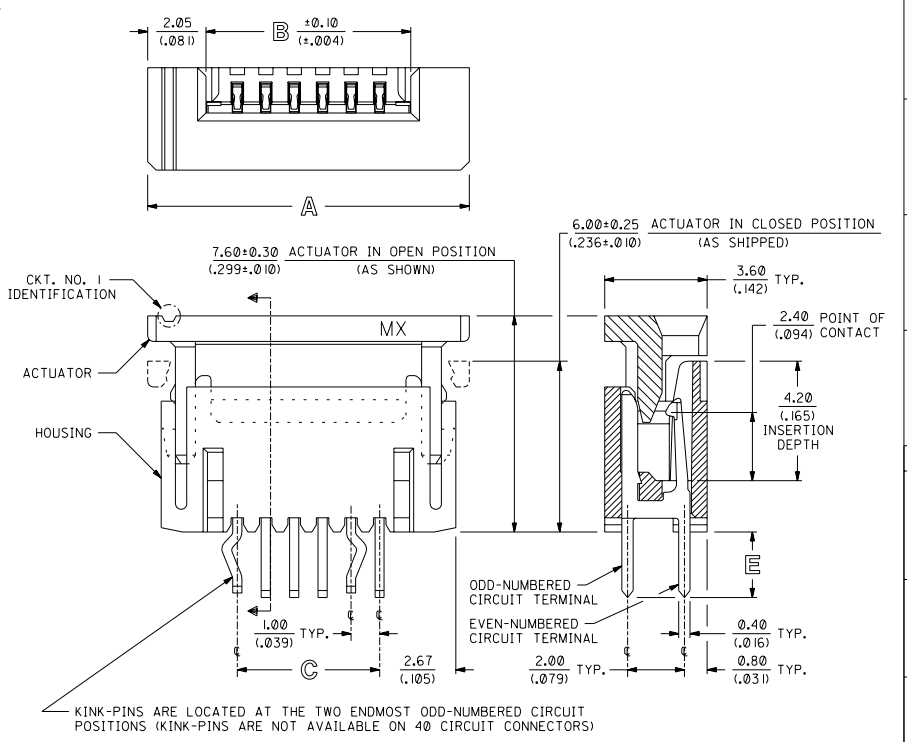
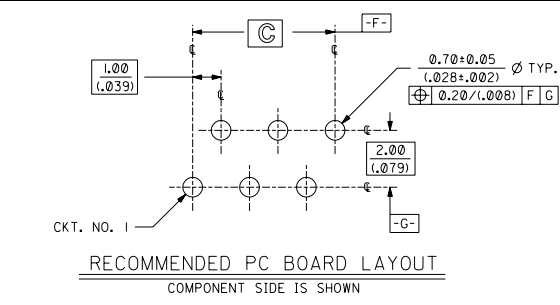
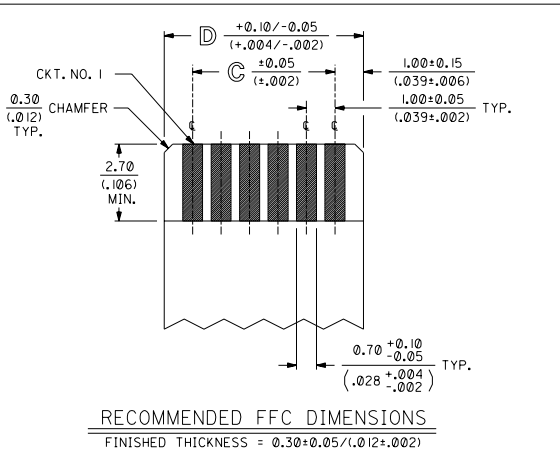
[Molex Connector Corporation](#)
[71226-2225](#)

For any questions, you can email us directly:

sales@integrated-circuit.com

NOTES:

- CONNECTOR MATERIALS:
HOUSING IS MADE OF NYLON (SEE CHART ON SHEET 2 FOR COLOR) AND ACTUATOR IS MADE OF LCP (LIQUID CRYSTAL POLYMER) (COLOR IS BLUE), BOTH ARE GLASS-FILLED AND RATED U.L. 94V-0; TERMINALS ARE 0.32/(.013) THICK PHOSPHOR BRONZE.
- TERMINAL FINISH:
5.0 MICROMETERS/200 MICROINCHES MINIMUM TIN OVER 1.3 MICROMETERS/ 50 MICROINCHES MINIMUM NICKEL UNDERPLATE OVERALL.
- THIS CONNECTOR CONFORMS TO PRODUCT SPECIFICATION PS-71226.
- SEE SHEET 2 FOR CONNECTOR PART NUMBERS, PACKAGING OPTIONS, AND DIMENSIONS NOT SHOWN BELOW.



KINK-PINS ARE LOCATED AT THE TWO ENDMOST ODD-NUMBERED CIRCUIT POSITIONS (KINK-PINS ARE NOT AVAILABLE ON 40 CIRCUIT CONNECTORS)

NOTE FOR LEAD FREE CONVERSION:
THE PRIMARY SHIPPING CARTON WILL BE LABELED "COMPLIANT TO ROHS DIRECTIVE 2002/95/EC AND ELV ANNEX II OF DIRECTIVE 2000/53/EC". CARTONS WITHOUT THIS LABEL MAY CONTAIN PRODUCT WITH LEAD.

DIMENSIONS SHOWN METRIC/(INCHES)

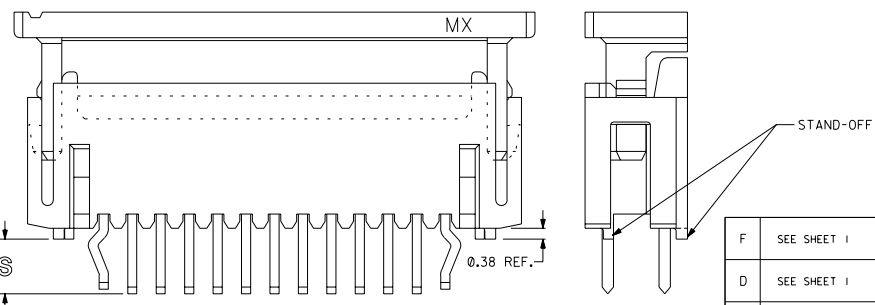
F	DELETE TUBE PKG UCP2003-1972 RWHITE 03/03/17	C2	ADD CKT. NO. 1 ECN *UDT 1999-0014 07/08/98 LMCGRATH
E	MOD HSG GEOMETRY ECN *UDT 1999-1004 DMORGAN 99/07/09	C1	ADD PKG SPEC ECN *UDT 1998-0299 05/26/98 LMCGRATH
G	LEAD FREE CONV ECN UCP2004-2092 RKADAMS 04/04/22	D	ADD P/N -2675 ECN *UDT 1999-0824 DMORGAN 99/04/06
C	ADDED TOL. & BASIC BOXES PER EC * U81224 J-LONG 97/11/20		

LTR.	REVISIONS	LTR.	REVISIONS	LTR.	REVISIONS
------	-----------	------	-----------	------	-----------

1	2	F
1	1	G
		MFG
		SKL
		REV.

MOLEX INCORPORATED SHEET NO. DATE
1 OF 2 12/16/92
PART NO. 71226-2225
SEE SHEET 2 SD-71226-***5
FILE NAME 507122601
CEN

CKT SIZE	ITEM NUMBER	HOUSING COLOR	X=NOT TOOLED	DIM A	DIM B	DIM C	DIM D	DIM E	
J	4	71226-0425	NATURAL	9.30/(.366)	5.20/(.205)	3.00/(.118)	5.00/(.197)	2.25±0.20 (.089±.008)	
J	6	71226-0625	NATURAL	11.30/(.445)	7.20/(.283)	5.00/(.197)	7.00/(.276)		
J	8	71226-0825	NATURAL	13.30/(.524)	9.20/(.362)	7.00/(.276)	9.00/(.354)		
I	10	71226-1025	NATURAL	15.30/(.602)	11.20/(.441)	9.00/(.354)	11.00/(.433)		
I	12	71226-1225	NATURAL	17.30/(.681)	13.20/(.520)	11.00/(.433)	13.00/(.512)		
I	14	71226-1425	NATURAL	19.30/(.760)	15.20/(.598)	13.00/(.512)	15.00/(.591)		
I	16	71226-1625	NATURAL	21.30/(.839)	17.20/(.677)	15.00/(.591)	17.00/(.669)		
I	18	71226-1825	NATURAL	23.30/(.917)	19.20/(.756)	17.00/(.669)	19.00/(.748)		
H	20	71226-2025	NATURAL	25.30/(.996)	21.20/(.835)	19.00/(.748)	21.00/(.827)		
H	22	71226-2225	NATURAL	27.30/(1.075)	23.20/(.913)	21.00/(.827)	23.00/(.906)		
H	24	71226-2425	NATURAL	29.30/(1.154)	25.20/(.992)	23.00/(.906)	25.00/(.984)		
H	26	71226-2625	NATURAL	31.30/(1.232)	27.20/(1.071)	25.00/(.984)	27.00/(1.063)		
H	28	71226-2825	NATURAL	33.30/(1.311)	29.20/(1.150)	27.00/(1.063)	29.00/(1.142)		
H	30	71226-3025	NATURAL	35.30/(1.390)	31.20/(1.228)	29.00/(1.142)	31.00/(1.220)		
H	40	71226-4025	NATURAL	X 45.30/(1.783)	41.20/(1.622)	39.00/(1.536)	41.00/(1.614)		
G	4	71226-0435	NATURAL	9.30/(.366)	5.20/(.205)	3.00/(.118)	5.00/(.197)	3.15±0.20 (.124±.008)	
G	6	71226-0635	NATURAL	11.30/(.445)	7.20/(.283)	5.00/(.197)	7.00/(.276)		
G	8	71226-0835	NATURAL	13.30/(.524)	9.20/(.362)	7.00/(.276)	9.00/(.354)		
F	10	71226-1035	NATURAL	15.30/(.602)	11.20/(.441)	9.00/(.354)	11.00/(.433)		
F	12	71226-1235	NATURAL	17.30/(.681)	13.20/(.520)	11.00/(.433)	13.00/(.512)		
F	14	71226-1435	NATURAL	19.30/(.760)	15.20/(.598)	13.00/(.512)	15.00/(.591)		
F	16	71226-1635	NATURAL	21.30/(.839)	17.20/(.677)	15.00/(.591)	17.00/(.669)		
F	18	71226-1835	NATURAL	23.30/(.917)	19.20/(.756)	17.00/(.669)	19.00/(.748)		
F	20	71226-2035	NATURAL	25.30/(.996)	21.20/(.835)	19.00/(.748)	21.00/(.827)		
F	22	71226-2235	NATURAL	27.30/(1.075)	23.20/(.913)	21.00/(.827)	23.00/(.906)		
E	24	71226-2435	NATURAL	29.30/(1.154)	25.20/(.992)	23.00/(.906)	25.00/(.984)		
E	26	71226-2635	NATURAL	31.30/(1.232)	27.20/(1.071)	25.00/(.984)	27.00/(1.063)		
E	28	71226-2835	NATURAL	33.30/(1.311)	29.20/(1.150)	27.00/(1.063)	29.00/(1.142)		
E	30	71226-3035	NATURAL	35.30/(1.390)	31.20/(1.228)	29.00/(1.142)	31.00/(1.220)		
E	40	71226-4035	NATURAL	X 45.30/(1.783)	41.20/(1.622)	39.00/(1.536)	41.00/(1.614)		
D	26	71226-2675	NATURAL		31.30/(1.232)	27.20/(1.071)	25.00/(.984)	27.00/(1.063)	2.77±0.20 (.109±.008)



STAND-OFF OPTION (71226-2675 SHOWN)
SEE SHEET I FOR DIMENSION NOT SHOWN

PACKAGED IN TRAYS PER PK-70873-0246

F SEE SHEET I		B SEE SHEET I		DIMENSIONS SHOWN METRIC/INCH		MFG, SHL, REV.																		
D SEE SHEET I		A I SEE SHEET I		UNLESS OTHERWISE SPECIFIED TOLERANCES ARE AS SHOWN		REVISE ONLY ON CAD SYSTEM																		
C I SEE SHEET I		A SEE SHEET I		<table border="1"> <tr><th>PLACES</th><th>INCH</th><th>METRIC</th></tr> <tr><td>1 PLACE</td><td>± .005</td><td>± .005</td></tr> <tr><td>2 PLACES</td><td>± .004</td><td>± .004</td></tr> <tr><td>3 PLACES</td><td>± .003</td><td>± .003</td></tr> </table>		PLACES	INCH	METRIC	1 PLACE	± .005	± .005	2 PLACES	± .004	± .004	3 PLACES	± .003	± .003	<table border="1"> <tr><td>MOLEX INCORPORATED</td><td>SHEET NO. 2</td><td>DATE 12/16/92</td></tr> <tr><td>SEE CHART</td><td>DWG. NO. SD-71226-***5</td><td></td></tr> </table>	MOLEX INCORPORATED	SHEET NO. 2	DATE 12/16/92	SEE CHART	DWG. NO. SD-71226-***5	
PLACES	INCH	METRIC																						
1 PLACE	± .005	± .005																						
2 PLACES	± .004	± .004																						
3 PLACES	± .003	± .003																						
MOLEX INCORPORATED	SHEET NO. 2	DATE 12/16/92																						
SEE CHART	DWG. NO. SD-71226-***5																							
LTR.	REVISIONS	LTR.	REVISIONS	<table border="1"> <tr><td>FILE NAME</td><td>SD7122608</td><td>REV.</td><td>TRAY</td></tr> <tr><td>APP'D.</td><td>CAB</td><td>SCALE</td><td>1:1</td></tr> <tr><td>BY</td><td></td><td></td><td></td></tr> </table>		FILE NAME	SD7122608	REV.	TRAY	APP'D.	CAB	SCALE	1:1	BY										
FILE NAME	SD7122608	REV.	TRAY																					
APP'D.	CAB	SCALE	1:1																					
BY																								