

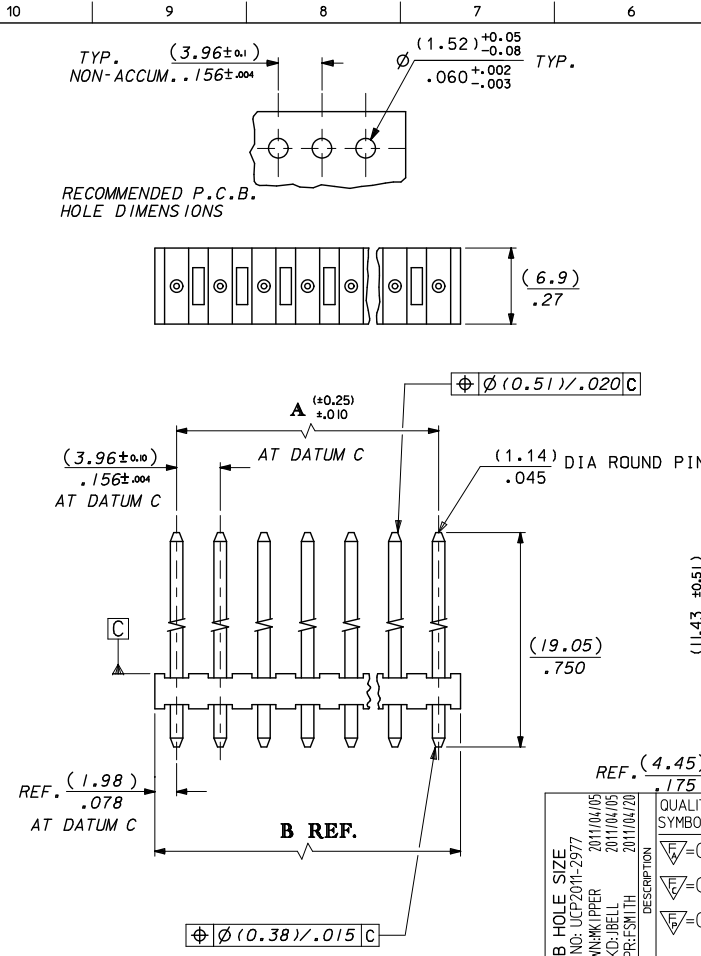
Excellent Integrated System Limited

Stocking Distributor

Click to view price, real time Inventory, Delivery & Lifecycle Information:

[Molex Connector Corporation](#)
[26-23-2091](#)

For any questions, you can email us directly:
sales@integrated-circuit.com



NO. OF CKTS	PART NO.	ENG. NO.	DIMN. A	DIMN. B
2	26-23-2021	AE-3192- 2A(501)	(3.96) / .156	(7.92) / .312
3	-2031	- 3A(501)	(7.92) / .312	(11.89) / .468
4	-2041	- 4A(501)	(11.89) / .468	(15.85) / .624
5	-2051	- 5A(501)	(15.85) / .624	(19.81) / .780
6	-2061	- 6A(501)	(19.81) / .780	(23.77) / .936
7	-2071	- 7A(501)	(23.77) / .936	(27.74) / 1.092
8	-2081	- 8A(501)	(27.74) / 1.092	(31.70) / 1.248
9	-2091	- 9A(501)	(31.70) / 1.248	(35.66) / 1.404
10	-2101	- 10A(501)	(35.66) / 1.404	(39.62) / 1.560
11	-2111	- 11A(501)	(39.62) / 1.560	(43.59) / 1.716
12	-2121	- 12A(501)	(43.59) / 1.716	(47.55) / 1.872
13	-2131	- 13A(501)	(47.55) / 1.872	(51.51) / 2.028
14	-2141	- 14A(501)	(51.51) / 2.028	(55.47) / 2.184
15	-2151	- 15A(501)	(55.47) / 2.184	(59.44) / 2.340
16	-2161	- 16A(501)	(59.44) / 2.340	(63.40) / 2.496
17	-2171	- 17A(501)	(63.40) / 2.496	(67.36) / 2.652
18	26-23-2181	AE-3192- 18A(501)	(67.36) / 2.652	(71.32) / 2.808

- NOTES:
- MATERIAL: HOUSING: NYLON, UL94V-2, COLOR: NATURAL
PINS: BRASS
 - FINISH: OVERALL GOLD: (0.00051)/.000020 MIN. OVER (0.00076)/.000030 MIN. NICKEL
 - PRODUCT SPECIFICATION: PS-99020-0087
 - PACKAGING SPECIFICATION: PER PK-3192-001
 - THIS PART CONFORMS TO CLASS B REQUIREMENTS OF COSMETIC SPECIFICATION PS-45499-002.
 - PIN PUSHOUT FORCE 13.3N / 3 LBS MIN.
 - PIN MUST CONFORM TO MOLEX SOLDERABILITY SPEC SMES-152 AFTER PLATING.
 - RECOMMENDED PCB BOARD THICKNESS: 1.6MM.

PCB HOLE SIZE EC NO: LCP2011-2977 DRAWN: M/PER 2011/04/05 CHECK: BELL 2011/04/05 APPROV: SMITH 2011/04/20	QUALITY SYMBOLS $\nabla=0$ $\nabla=0$ $\nabla=0$	GENERAL TOLERANCES (UNLESS SPECIFIED)	DIMENSION STYLE	SCALE	DESIGN UNITS	THIRD ANGLE PROJECTION															
		<table border="1"> <tr> <th></th> <th>mm</th> <th>INCH</th> </tr> <tr> <td>4 PLACES</td> <td>± .---</td> <td>± .---</td> </tr> <tr> <td>3 PLACES</td> <td>± .---</td> <td>± .010</td> </tr> <tr> <td>2 PLACES</td> <td>± 0.25</td> <td>± .015</td> </tr> <tr> <td>1 PLACE</td> <td>± 0.35</td> <td>± .---</td> </tr> </table>		mm	INCH	4 PLACES	± .---	± .---	3 PLACES	± .---	± .010	2 PLACES	± 0.25	± .015	1 PLACE	± 0.35	± .---	MM/IN	3:1	METRIC	
			mm	INCH																	
		4 PLACES	± .---	± .---																	
3 PLACES	± .---	± .010																			
2 PLACES	± 0.25	± .015																			
1 PLACE	± 0.35	± .---																			
DRAFT WHERE APPLICABLE MUST REMAIN WITHIN DIMENSIONS	DRAWN BY: NPC DATE: 1986/11/13 CHECKED BY: _____ DATE: _____ APPROVED BY: _____ DATE: _____	TITLE	WAFER ASSY. KK, (3.96) / .156 CENTRES DIA. (1.14) / .045 PINS																		
		MATERIAL NO.	DOCUMENT NO.	SHEET NO.																	
		SEE CHART	SDAE-3192-NA-501	1 OF 1																	
		THIS DRAWING CONTAINS INFORMATION THAT IS PROPRIETARY TO MOLEX INCORPORATED AND SHOULD NOT BE USED WITHOUT WRITTEN PERMISSION																			