

Excellent Integrated System Limited

Stocking Distributor

Click to view price, real time Inventory, Delivery & Lifecycle Information:

[Bel Fuse Inc.](#)
[PL3155AC-201](#)

For any questions, you can email us directly:
sales@integrated-circuit.com

RED INDICATES ORIGINAL

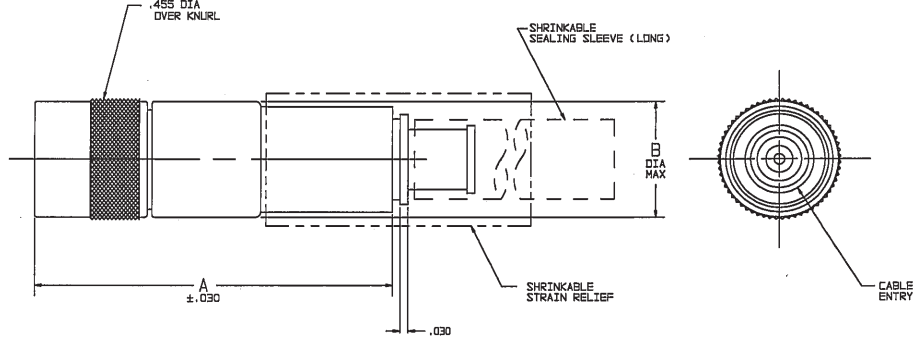
DASH NO	CABLES ACCOMMODATED	A DIM	B DIA	C HEX	ASSEMBLE PER
-201	M17/176-00002				
-202	TWC-78-1				
-203	TWC-124-1A	1.148	.339	.255	TAI-143
-204	10802, RAYCHEM				
-205	TWC-78-1F2				
-206	782800130, RAYCHEM				
-207	83310 BELDEN	1.352	.442	.344	TAI-167
-208	202-3927 MICRODOT				
-209	202-3942 MICRODOT	1.148	.339	.255	TAI-143
-210	8451 BELDEN				
-211	202-3934 MICRODOT				
-212	2524E0114, RAYCHEM				
-213	TWC-78-2	1.352	.442	.344	TAI-144
-214	TWC-124-2				
-215	BL-882 TIMES				
-216	BL-1242 TIMES				
-217	GC875TM24H, GRUMMAN				
-218	EPO 22188B, RAYCHEM				
-219	252801114, RAYCHEM				
-220	GC875RR1, GRUMMAN	1.148	.339	.255	TAI-143
-221	10814, RAYCHEM				
-222	10813, RAYCHEM				
-223	HMS2-1149, HUGHES				
-224	TWCP-124-3	1.352	.442	.344	TAI-144
-225	PSB55PL, PRIME STOCK				

DASH NO	CABLES ACCOMMODATED	A DIM	B DIA	C HEX	ASSEMBLE PER
-301	GC875GC1, GRUMMAN				
-302	GC875GB1, GRUMMAN S02251111, RAYCHEM	1.148	.339	.255	TAI-153
-303	7528A5314, RAYCHEM				
-304					
-305	M17/177-00001 295-3804 MICRODOT				TAI-173
-306	TRC-50-2 M17/134-00002	1.352	.442	.344	TAI-189
-307	TRC-75-1				TAI-173
-308	TRC-75-2				TAI-173
-309	TRC-50-1	1.148	.339	.255	TAI-153

DATA CONTAINED IN THIS DOCUMENT IS PROPRIETARY TO TROMPETER ELECTRONICS INC AND SHALL NOT BE REPRODUCED, COPIED OR USED FOR REPRODUCTION OF MANUFACTURE WITHOUT EXPRESS WRITTEN PERMISSION.

REV		ED	DESCRIPTION	DWN	APPROVED	DATE
L	12388		ADDED -224 & -225 NOTE 3 THREADED WAS 4 LUG; SEE ECD	DBN	WM	9-8

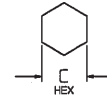
INCH	MM
.005	0.13
.030	0.76
.255	6.48
.339	8.61
.344	8.74
.442	11.23
.455	11.56
1.00	25.40
1.148	29.11
1.25	31.75
1.352	34.34
1.75	44.45



-207 SHOWN

- 1 SHRINKABLE STRAIN RELIEF AND/OR SHRINKABLE SEALING SLEEVE SUPPLIED LOOSE AS FOLLOWS:
- CABLE GROUPS -207, -210 & -307:
 - 1 SHRINKABLE STRAIN RELIEF (1.00 LONG)
 - 1 SHRINKABLE SEALING SLEEVE (1.25 LONG)
 - CABLE GROUPS -201 THROUGH -206, -208, -209, -217 THROUGH -223, -301, -302, -303 & -309:
 - 1 SHRINKABLE SEALING SLEEVE (1.25 LONG)
 - CABLE GROUPS -211 THROUGH -215, -305, -306 & -308:
 - 1 SHRINKABLE STRAIN RELIEF (1.75 LONG)
3. THREADED SUBMINIATURE CONCENTRIC TWINAX (4 PIECE ASSY) AND TRIAX (6 PIECE ASSY), FULL CRIMP CABLE PLUG
2. FINISH: TFS-1A (NICKEL)
1. ALL DIM ARE IN INCHES

6. EXAMPLE OF COMPLETE MODEL NO:
 PL3155AC-201
 BASIC MODEL NO. — CABLE GROUP DASH NO
5. EXAMPLE OF COMPLETE PART NO:
 310-0062-201
 BASIC PART NO. — CABLE GROUP DASH NO



RECOMMENDED
 HEX CRIMP
 SCALE: NONE

QTY	DESCRIPTION	PART NUMBER	ITEM
TOL. UNLESS SPECIFIED .004 ± .03 .005 ± .005 .0000 ± .0000 ANGLES	TROMPETER THE BEST CONNECTIVITY	PL3155AC/PL3155ACS	
DWN DBN 4/8/88	MATERIAL	CODE IDENT 14949	DRAWING NO. 310-0062
CHK WM 4-7-88			REV L
ENGR			
APPR	SCALE 4/1	DATE 7-2-85	SHEET 1 OF 2