



Distributor of Molex Connector Corporation: Excellent Integrated System Limited
Datasheet of 0672982191 - Connector Receptacle USB TypeA, Stacked 8 Position Through
Hole, Right Angle, Horizontal

Contact us: sales@integrated-circuit.com Website: www.integrated-circuit.com

Excellent Integrated System Limited

Stocking Distributor

Click to view price, real time Inventory, Delivery & Lifecycle Information:

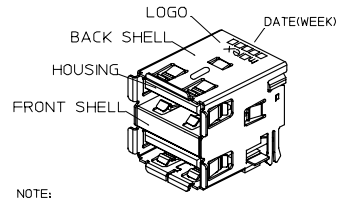
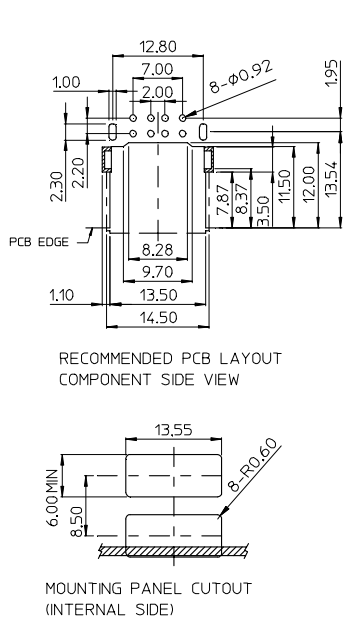
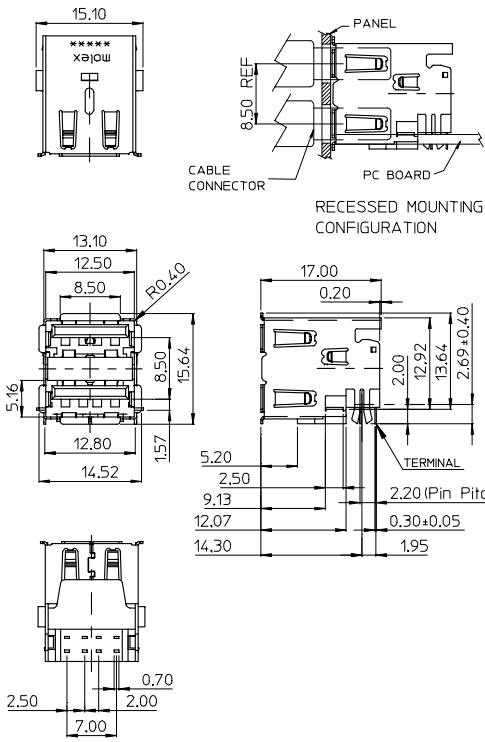
[Molex Connector Corporation](#)
[0672982191](#)

For any questions, you can email us directly:
sales@integrated-circuit.com

Contact us: sales@integrated-circuit.com Website: www.integrated-circuit.com

E
D
C
B
A

E
D
C
B
A



- NOTE:
- MATERIAL:
HOUSING: NYLON GLASS-FIBER REINFORCED.
UL94-V0, COLOR: BLACK.
TERMINAL: PHOSPHOR BRONZE.
METAL SHELL: FRONT SHELL: SUS 304
BACK SHELL: BRASS
 - PLATING:
TERMINAL:
CONTACT AREA: SEE TABLE
SOLDER TAIL: TIN PLATED (Sn) ALLOY, THICKNESS: 75 MICRONCH MIN.
UNDERPLATE: NICKEL (Ni), THICKNESS: 50 MICRONCH MIN.
SURFACE APPEARANCE: BRIGHT.
METAL SHELL:
TIN PLATED (Sn) AT SOLDER AREA
THICKNESS: 100 MICRONCH MINIMUM.
UNDER PLATE: NICKEL (Ni), (SOLDERING AVAILABLE)
THICKNESS: 50 MICRONCH MINIMUM.
SURFACE APPEARANCE: BRIGHT.
 - RECOMMENDED PCB THICKNESS: 1.20±0.05MM
 - PRODUCT SPECIFICATION: REFER TO PS-67998-002
 - TEST SUMMARY: REFER TO TS-67298-007
 - PACKAGING SPECIFICATION:
REFER TO PK-67298-003 FOR TRAY,
REFER TO PK-67298-004 FOR TAPE & REEL.
 - LEAD FREE AND ROHS COMPLIANCE PRODUCT
 - FOR IR REFLOW PROCESS
 - WEEK CODE: XXXXX
- FACTORY
YEAR
WEEK

PART NUMBER LEGEND

P/N	CONTACT PLATING	PACKAGE
67298-2090	GOLD FLASH	TRAY
67298-2091	30 MICRONCH GOLD	TRAY
67298-2190	GOLD FLASH	TAPE & REEL
67298-2191	30 MICRONCH GOLD	TAPE & REEL

REV	DESCRIPTION
L/F FOR 67298	
EC NO: SH220055297	
DRWN: JCHEN12	2005/05/06
CHKD:	2005/05/10
APPR: WWSCHANG	2005/05/10

QUALITY SYMBOLS	GENERAL TOLERANCES (UNLESS SPECIFIED)	
	mm	INCH
▽=0	4 PLACES ±---	±---
▽=0	3 PLACES ±---	±---
	2 PLACES ±0.25	±---
	1 PLACE ±0.25	±---
	ANGULAR ± 3°	

DRAFT WHERE APPLICABLE MUST REMAIN WITHIN DIMENSIONS

DIMENSION STYLE		SCALE	DESIGN UNITS	THIRD ANGLE PROJECTION
MM ONLY			METRIC	
DRAWN BY	DATE	TITLE	MOLEX INCORPORATED	
IVY-LIN	05/04/18	USB DUAL STACKED A CONNECTOR (LEAD FREE VERSION)		
CHECKED BY	DATE			
ALLEN	05/04/18			
APPROVED BY	DATE			
WWSCHANG	05/04/18			
MATERIAL NO.	DOCUMENT NO.	SHEET NO.		
	SD-67298-007	1 OF 1		

DRAWING INFORMATION	
SIZE	THIS DRAWING CONTAINS INFORMATION THAT IS PROPRIETARY TO MOLEX INCORPORATED AND SHOULD NOT BE USED WITHOUT WRITTEN PERMISSION