

## Excellent Integrated System Limited

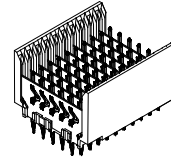
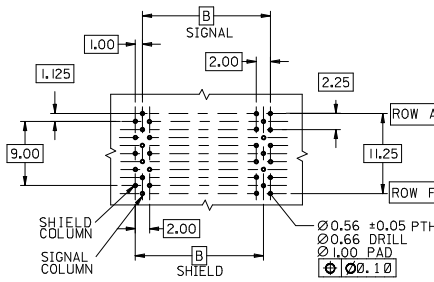
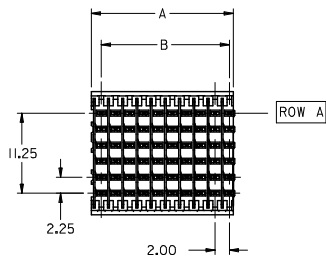
Stocking Distributor

Click to view price, real time Inventory, Delivery & Lifecycle Information:

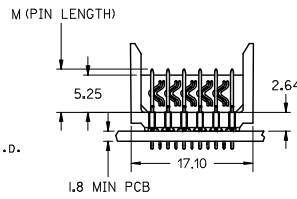
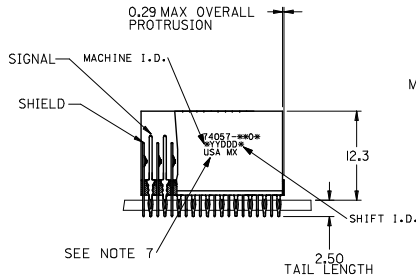
[Molex Connector Corporation](#)  
[0740572503](#)

For any questions, you can email us directly:

[sales@integrated-circuit.com](mailto:sales@integrated-circuit.com)



**BACKPLANE HOLE PATTERN**  
RECOMMENDED DIMENSIONS



**NOTES:**

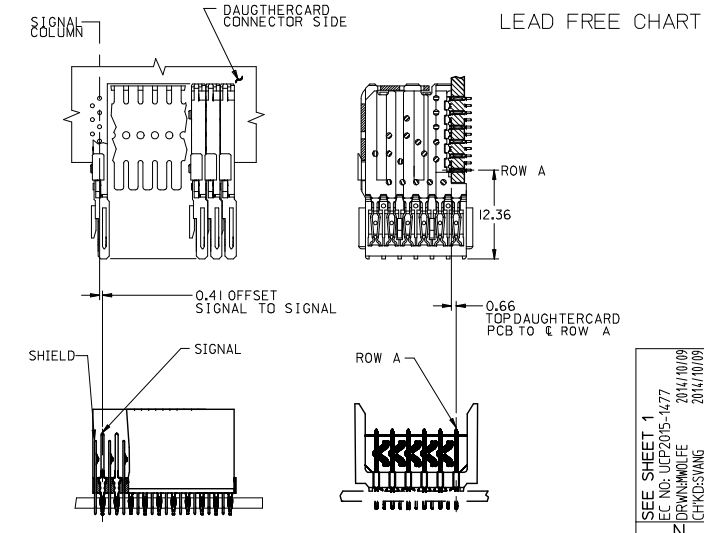
- MATERIALS:**  
HOUSING - LIQUID CRYSTAL POLYMER (LCP), GLASS-FILLED, UL 94V-0, COLOR: BLACK  
SIGNAL PIN & SHIELD - COPPER ALLOY
- FINISHES:**  
CONTACT AREA: SELECTIVE GOLD (Au)  
PCB TAILS: SELECTIVE MATTE TIN (Sn)  
NICKEL (Ni) OVERALL.
- THIS PART CONFORMS TO MOLEX PRODUCT SPECIFICATION PS-74031-999
- FOR MIXED CONTACT LENGTHS CONSULT MOLEX FOR AVAILABILITY
- FOR SPECIFIC MATERIAL NUMBERS & MATING INFORMATION REFER TO SHEET 2
- PACKAGE PER PK-74057-003
- EITHER MARK PART WITH PART NUMBER & DATE CODE APPROXIMATELY WHERE SHOWN OR PLACE LABEL ON THE TUBE.
- MAPS (MOLEX ADVANCED PLATING SYSTEM)

REV DIMENSION 011 EC NO: UCP2015-1477 DRAWN BY: DRW:WOLFE CHK:KSWANG APPR:SMILLER DATE: 2014/10/09 DATE: 2014/10/09 DATE: 2014/10/17	QUALITY SYMBOLS ∇=0 ∇=0 ∇=0	GENERAL TOLERANCES (UNLESS SPECIFIED)		DIMENSION STYLE MM ONLY		SCALE 2.5:1	DESIGN UNITS METRIC	THIRD ANGLE PROJECTION		
		4 PLACES ± --- ± ---	mm	INCH	DRAWN BY	DATE	TITLE VHDM 6 ROW OPEN END BACKPLANE SALES ASSEMBLY <b>molex</b>			
		3 PLACES ± --- ± ---			CHECKED BY	DATE				
		2 PLACES ± 0.25 ± ---			APPROVED BY	DATE				
1 PLACE ± 0.38 ± ---			SMILLER	2012/05/23	MATERIAL NO. SEE SHEET 2		DOCUMENT NO. SD-74057-002		SHEET NO. 1 OF 2	
0 PLACE ± --- ± ---			ANGULAR ±1/2°		THIS DRAWING CONTAINS INFORMATION THAT IS PROPRIETARY TO MOLEX INCORPORATED AND SHOULD NOT BE USED WITHOUT WRITTEN PERMISSION					
DRAFT WHERE APPLICABLE MUST REMAIN WITHIN DIMENSIONS										

PART NUMBER	COLUMN	NUMBER OF SIGNAL PIN	NUMBER OF SHIELD	A	B	M	GOLD THICKNESS MICROMETER	TIN THICKNESS MICROMETER
74057-6001	10	60	10	20,00	18,00	4.75	0.25 MAPS	0.76-1.52
74057-9001							0.76	
74057-9006							1.27	
74057-6501	0.25 MAPS							
74057-9501	0.76							
74057-9506	1.27							
74057-7001	25	150	25	50,00	48,00	0.25 MAPS		
74057-8501						0.76		
74057-8506						1.27		
74057-6002	10	60	10	20,00	18,00	0.25 MAPS		
74057-9002						0.76		
74057-9007						1.27		
74057-6502	15	90	15	30,00	28,00	0.25 MAPS		
74057-9502						0.76		
74057-9507						1.27		
74057-7002	25	150	25	50,00	48,00	0.25 MAPS		
74057-8502						0.76		
74057-8507						1.27		
74057-6003	10	60	10	20,00	18,00	0.25 MAPS		
74057-9003						0.76		
74057-9008						1.27		
74057-6503	15	90	15	30,00	28,00	0.25 MAPS		
74057-9503						0.76		
74057-9508						1.27		
74057-7003	25	150	25	50,00	48,00	0.25 MAPS		
74057-8503						0.76		
74057-8508						1.27		
74057-6004	10	60	10	20,00	18,00	0.25 MAPS		
74057-9004						0.76		
74057-9009						1.27		
74057-6504	15	90	15	30,00	28,00	0.25 MAPS		
74057-9504						0.76		
74057-9509						1.27		
74057-7004	25	150	25	50,00	48,00	0.25 MAPS		
74057-8504						0.76		
74057-8509						1.27		

PART NUMBER	COLUMN	NUMBER OF SIGNAL PIN	NUMBER OF SHIELD	A	B	M	GOLD THICKNESS MICROMETER	TIN THICKNESS MICROMETER		
74057-1001	10	60	10	20,00	18,00	4.75	0.76	0.76-1.52		
74057-1006							1.27			
74057-1501							0.76			
74057-1506	1.27									
74057-2501	0.76									
74057-2506	1.27									
74057-1002	10	60	10	20,00	18,00	0.76				
74057-1502						1.27				
74057-1507						0.76				
74057-2502	15	90	15	30,00	28,00	0.76				
74057-2507						1.27				
74057-1003						0.76				
74057-1008	10	60	10	20,00	18,00	0.76				
74057-1007						1.27				
74057-1503						0.76				
74057-1508	15	90	15	30,00	28,00	0.76				
74057-1507						1.27				
74057-2503						0.76				
74057-2508	25	150	25	50,00	48,00	0.76				
74057-1004						1.27				
74057-1009						0.76				
74057-1504	15	90	15	30,00	28,00	0.76				
74057-1509						1.27				
74057-2504						0.76				
74057-2509	25	150	25	50,00	48,00	1.27				

LEAD FREE  
(FORMERLY TIN/LEAD) CHART



74057 - \* \* 0 \*

NUMBER OF COLUMNS/PLATING	PIN HEIGHT
10 = 10 COLUMN MATTE TIN (FORMERLY TIN/LEAD)	1 & 6 = 4.75
15 = 15 COLUMN MATTE TIN (FORMERLY TIN/LEAD)	2 & 7 = 6.25
25 = 25 COLUMN MATTE TIN (FORMERLY TIN/LEAD)	3 & 8 = 4.25
60 = 10 COLUMN MATTE TIN (MAPS)	4 & 9 = 5.15
65 = 15 COLUMN MATTE TIN (MAPS)	
70 = 25 COLUMN MATTE TIN (MAPS)	
90 = 10 COLUMN MATTE TIN	
95 = 15 COLUMN MATTE TIN	
85 = 25 COLUMN MATTE TIN	

SEE SHEET 1 EC NO: UCP2015-1477 DRAWN BY: DRW/MWOLF CHKD BY: CHK/SYANG APPR: SMILLER 2014/10/09 2014/10/09 2014/10/17	QUALITY SYMBOLS ∇=0 ∇=0 ∇=0	GENERAL TOLERANCES (UNLESS SPECIFIED) mm INCH	DIMENSION STYLE MM ONLY	SCALE 2.5:1	DESIGN UNITS METRIC	THIRD ANGLE PROJECTION	
		4 PLACES ± --- ± --- 3 PLACES ± --- ± --- 2 PLACES ± 0.25 ± --- 1 PLACE ± 0.38 ± --- 0 PLACE ± --- ± ---	DRAWN BY: MWANG DATE: 1998/11/09 CHECKED BY: JLAURX DATE: 1998/11/09 APPROVED BY: SMILLER DATE: 2012/05/23	TITLE VHDM 6 ROW OPEN END BACKPLANE SALES ASSEMBLY	MATERIAL NO. SEE TABLE	DOCUMENT NO. SD-74057-002	SHEET NO. 2 OF 2
		ANGULAR ±1/2° DRAFT WHERE APPLICABLE MUST REMAIN WITHIN DIMENSIONS	SIZE C	THIS DRAWING CONTAINS INFORMATION THAT IS PROPRIETARY TO MOLEX INCORPORATED AND SHOULD NOT BE USED WITHOUT WRITTEN PERMISSION			