

Excellent Integrated System Limited

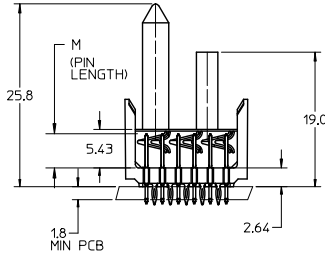
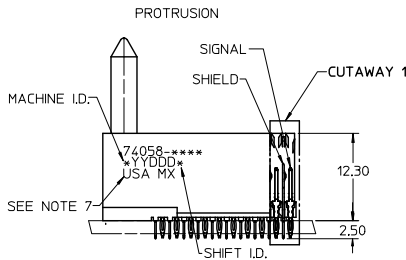
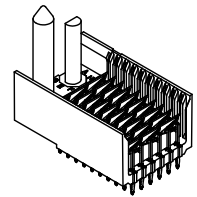
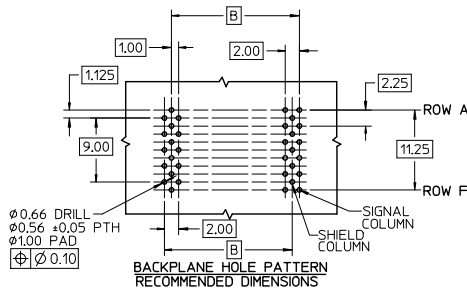
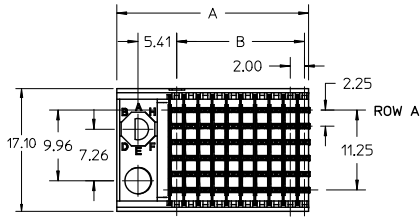
Stocking Distributor

Click to view price, real time Inventory, Delivery & Lifecycle Information:

[Molex Connector Corporation](#)
[0740581116](#)

For any questions, you can email us directly:

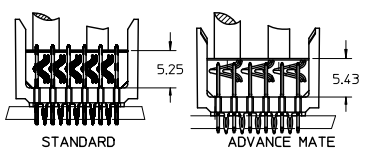
sales@integrated-circuit.com



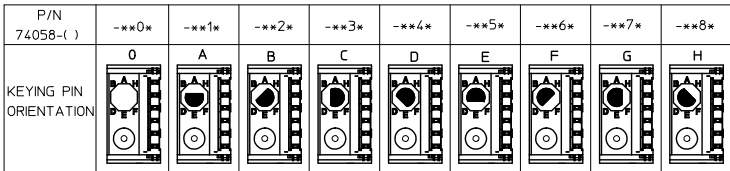
NOTES:

1. MATERIAL: HOUSING -LIQUID CRYSTAL POLYMER (LCP)
GLASS-FILLED, UL 94 V-0, COLOR: BLACK,
SIGNAL & SHIELD -COPPER ALLOY.
2. FINISHES:
CONTACT AREA: SELECTIVE GOLD (Au)
PCB TAILS: SELECTIVE MATTE TIN (Sn)
NICKEL (Ni) OVERALL.
3. THIS PART CONFORMS TO MOLEX PRODUCT SPECIFICATION
PS-74031-999.
4. FOR MIXED CONTACT MATING LENGTHS CONSULT MOLEX FOR
AVAILABILITY.
5. FOR SPECIFIC PART NUMBER AND MATING INFORMATION REFER
TO SHEET 2.
6. PACKAGE PER PK-74058-003.
7. MARK PART NUMBER AND DATE CODE APPROXIMATELY
WHERE SHOWN
8. MAPS (MOLEX ADVANCED PLATING SYSTEM).

THE PRIMARY CARTON WITH A LABEL STATING
"ELV AND RoHS COMPLAINT" IS LEAD FREE.
CARTONS WITHOUT THIS LABEL MAY CONTAIN LEAD.



LEAD FREE CONVERSION EC NO: UCP/2013-0667 DRAWING NO: 2012/08/24 CHK'D BY: CHIKO WOLFE APPR'D BY: JAMES MILLER DATE: 2012/11/28 DATE: 2012/12/14 DESCRIPTION:	QUALITY SYMBOLS	GENERAL TOLERANCES (UNLESS SPECIFIED)	DIMENSION STYLE	SCALE	DESIGN UNITS	THIRD ANGLE PROJECTION	
	$\nabla = 0$ $\nabla = 0$ $\nabla = 0$	mm INCH 4 PLACES ± --- ± --- 3 PLACES ± --- ± --- 2 PLACES ± --- ± --- 1 PLACE ± --- ± --- 0 PLACE ± --- ± ---	MM ONLY	2.5:1	METRIC	DRAWN BY: MQWANG CHECKED BY: JLAURX APPROVED BY: CBIXLER DATE: 2001/08/20 DATE: 2001/08/22 DATE: 2001/08/22	TITLE: VHDM SALES ASSEMBLY 6 ROW ADVANCE MATE SIGNAL END BACKPLANE
	ANGULAR ±1/2° DRAFT WHERE APPLICABLE MUST REMAIN WITHIN DIMENSIONS	MATERIAL NO. SEE SHEET 2	DOCUMENT NO. SD-74058-003	SHEET NO. 1 OF 2			
	SIZE C	THIS DRAWING CONTAINS INFORMATION THAT IS PROPRIETARY TO MOLEX INCORPORATED AND SHOULD NOT BE USED WITHOUT WRITTEN PERMISSION					

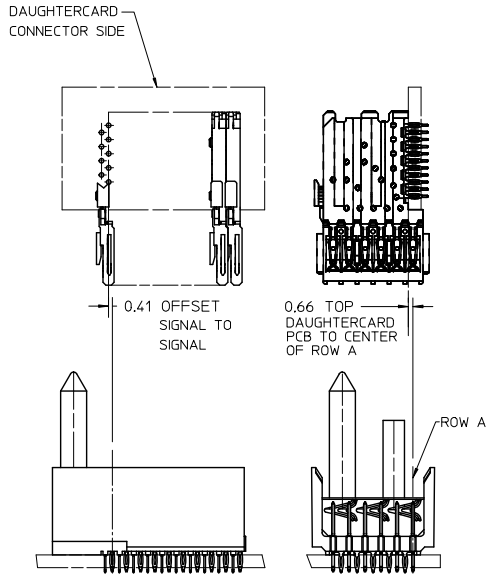


74058-***

NUMBER OF COLUMNS/PLATING
 11 = 10 COLUMN MATTE TIN (FORMERLY TIN/LEAD)
 26 = 25 COLUMN MATTE TIN (FORMERLY TIN/LEAD)
 61 = 10 COLUMN MATTE TIN (MAPS)
 76 = 25 COLUMN MATTE TIN (MAPS)
 91 = 10 COLUMN MATTE TIN
 86 = 25 COLUMN MATTE TIN

CONTACT LOAD (PIN LENGTH)
 1 & 6 = 4.75
 2 & 7 = 6.25
 3 & 8 = 4.25
 4 & 9 = 5.15

PART NUMBER	COLUMN	NUMBER OF SIGNAL PIN	NUMBER OF SHIELD	A	B	M	GOLD THICKNESS MICROMETER	TIN THICKNESS MICROMETER
74058-61*1							0.25 MAPS	
74058-1*1	10	60	10	27.00	18.00		0.76	
74058-1*6						4.75	1.27	
74058-76*1							0.25 MAPS	
74058-6*1	25	150	25	57.00	48.00		0.76	
74058-6*6							1.27	
74058-61*2							0.25 MAPS	
74058-1*2	10	60	10	27.00	18.00		0.76	
74058-1*7						6.25	1.27	
74058-76*2							0.25 MAPS	
74058-6*2	25	150	25	57.00	48.00		0.76	
74058-6*7							1.27	
74058-61*3							0.25 MAPS	
74058-1*3	10	60	10	27.00	18.00		0.76	
74058-1*8						4.25	1.27	
74058-76*3							0.25 MAPS	
74058-6*3	25	150	25	57.00	48.00		0.76	
74058-6*8							1.27	
74058-61*4							0.25 MAPS	
74058-1*4	10	60	10	27.00	18.00		0.76	
74058-1*9						5.15	1.27	
74058-76*4							0.25 MAPS	
74058-6*4	25	150	25	57.00	48.00		0.76	
74058-6*9							1.27	



SEE SHEET 1 EC NO: UCP2013-0687 2012/08/21 CHK: KIMOLFE 2012/11/28 APPR: SMILLER 2012/12/14	QUALITY SYMBOLS	GENERAL TOLERANCES (UNLESS SPECIFIED)	DIMENSION STYLE	SCALE	DESIGN UNITS	THIRD ANGLE PROJECTION
	$\nabla=0$ $\nabla=0$ $\nabla=0$	mm INCH 4 PLACES ± --- ± --- 3 PLACES ± --- ± --- 2 PLACES ± --- ± --- 1 PLACE ± --- ± --- 0 PLACE ± --- ± ---	MM ONLY	2.5:1	METRIC	
	ANGULAR ± 1/2° DRAFT WHERE APPLICABLE MUST REMAIN WITHIN DIMENSIONS	DRAWN BY: MOWANG CHECKED BY: JLAURX APPROVED BY: CBIXLER DATE: 2001/08/20 DATE: 2001/08/22 DATE: 2001/08/22	TITLE	VHDM SALES ASSEMBLY 6 ROW ADVANCE MATE SIGNAL END BACKPLANE		
	MATERIAL NO. SEE TABLE	DOCUMENT NO. SD-74058-003			SHEET NO.	2 OF 2