

Excellent Integrated System Limited

Stocking Distributor

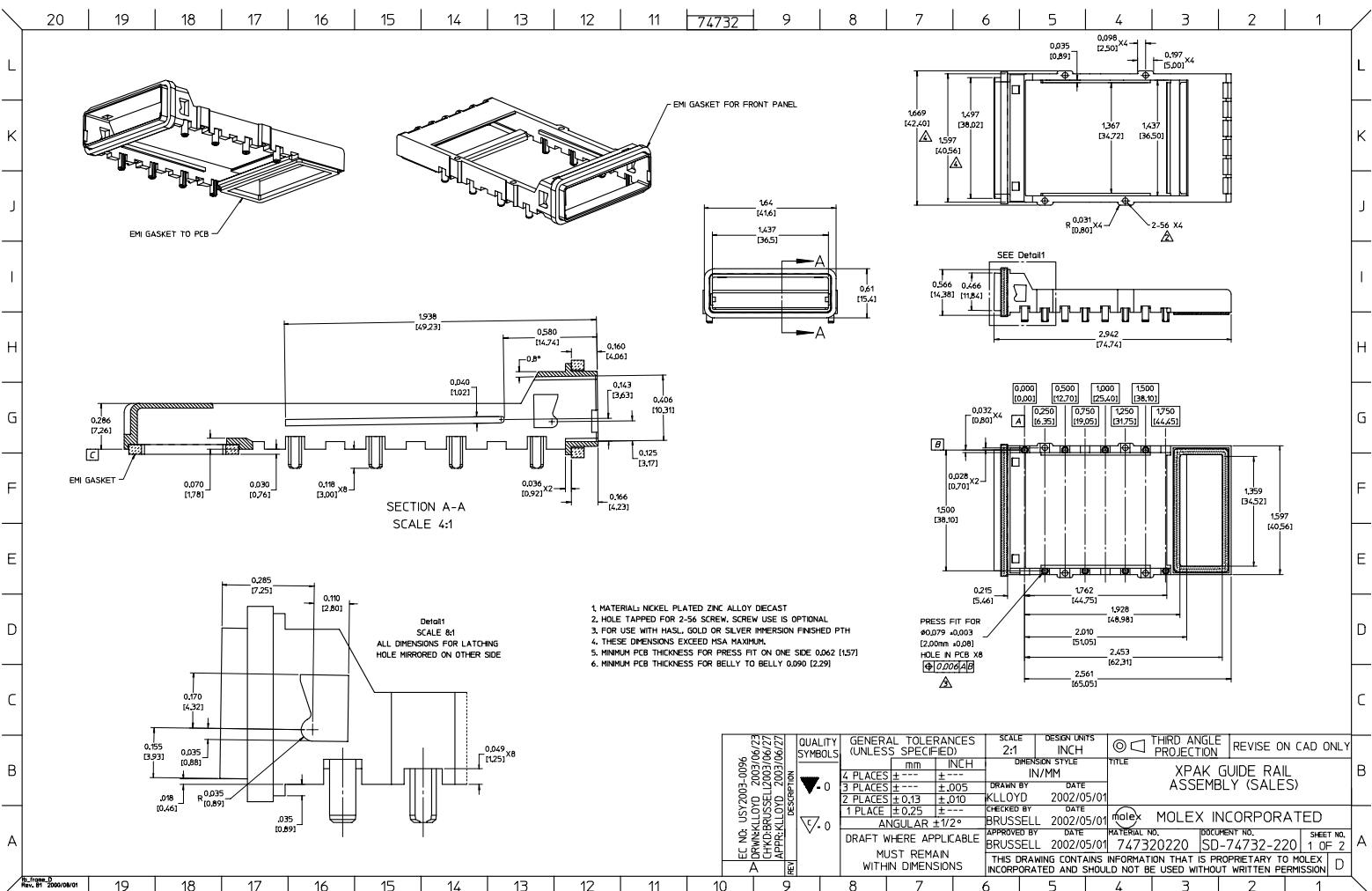
Click to view price, real time Inventory, Delivery & Lifecycle Information:

[Molex Connector Corporation](#)

[0747320220](#)

For any questions, you can email us directly:

sales@integrated-circuit.com



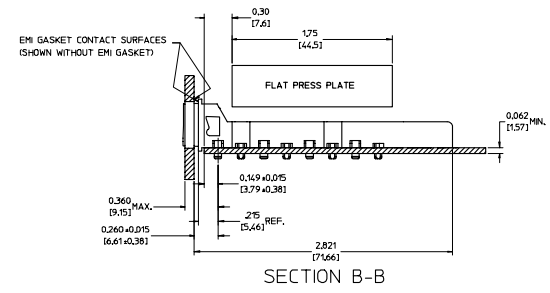
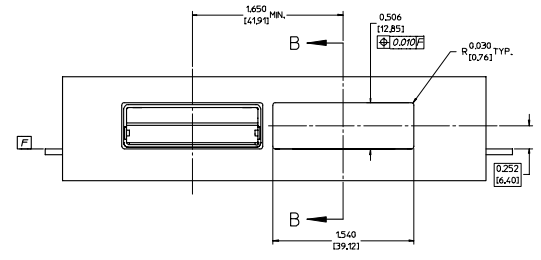
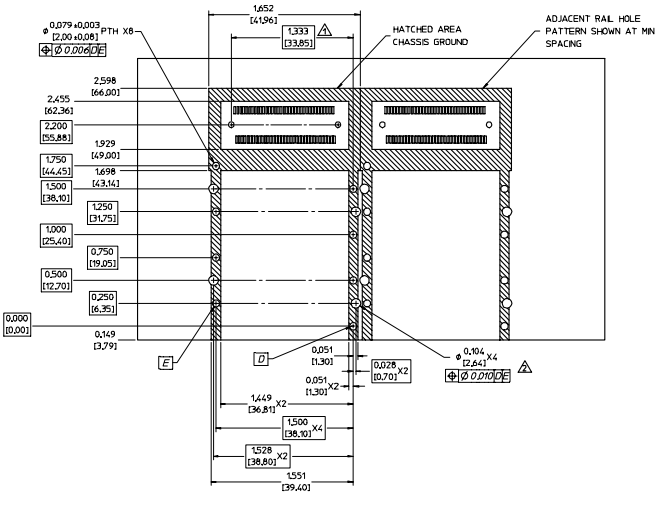
EC. NO. 15572003.0006 DRAWN BY: BRUSSELL 2002/06/27 CHECKED BY: KILLOYD 2003/06/27 APPROVED BY: KILLOYD 2003/06/27	QUALITY SYMBOLS -0 -0.0 DRAFT WHERE APPLICABLE MUST REMAIN WITHIN DIMENSIONS	GENERAL TOLERANCES (UNLESS SPECIFIED)	SCALE 2:1	DESIGN UNITS INCH	DIMENSION STYLE IN/MM	THIRD ANGLE PROJECTION	REVISE ON CAD ONLY
		4 PLACES ± --- ± --- 3 PLACES ± --- ± .005 2 PLACES ± 0.13 ± .010 1 PLACE ± 0.25 ± --- ANGULAR ± 1/2°	mm INCH IN/MM	DRAWN BY: KILLOYD CHECKED BY: BRUSSELL APPROVED BY: BRUSSELL	DATE: 2002/05/01 DATE: 2002/05/01 DATE: 2002/05/01	TITLE: XPAK GUIDE RAIL ASSEMBLY (SALES)	MATERIAL NO. 747320220 DOCUMENT NO. ISD-74732-220

MOLEX INCORPORATED
 THIS DRAWING CONTAINS INFORMATION THAT IS PROPRIETARY TO MOLEX INCORPORATED AND SHOULD NOT BE USED WITHOUT WRITTEN PERMISSION

20 19 18 17 16 15 14 13 12 11 10 9 8 7 6 5 4 3 2 1

L
K
J
I
H
G
F
E
D
C
B
A

L
K
J
I
H
G
F
E
D
C
B
A

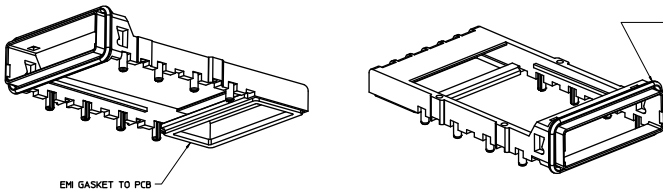


1. SEE DRAWING SD-74441-001 FOR HOST CONNECTOR LAYOUT DETAIL.
2. FINISHED THROUGH HOLE DIAMETER. CAN BE PLATED OR NON-PLATED.
3. PLATED HOLES CAN BE HASL, GOLD OR SILVER IMMERSION.
4. PCB LAYOUT SHOWN IS FOR SINGLE SIDED MOUNTING ONLY.
5. BELLY TO BELLY MOUNTING REQUIRES ABOVE LAYOUT MIRRORRED ON OPPOSITE SIDE OF PCB AND THE SECONDARY BEZEL OPENING MUST ACCOMMODATE THE PCB THICKNESS VARIATION.

EC NO. 15177003-0006 DRN:K LLOYD 2003/06/27 CHD:BRUSSELL 2003/06/27 APPR:K LLOYD 2003/06/27	QUALITY SYMBOLS	GENERAL TOLERANCES (UNLESS SPECIFIED)	SCALE 2:1	DESIGN UNITS INCH	THIRD ANGLE PROJECTION	REVISE ON CAD ONLY
	-0 -0.1	4 PLACES ± --- ± --- 3 PLACES ± --- ± .005 2 PLACES ± 0.13 ± .010 1 PLACE ± 0.25 ± ---	DIMENSION STYLE IN/MM DRAWN BY K LLOYD DATE 2002/05/01 CHECKED BY BRUSSELL DATE 2002/05/01 APPROVED BY BRUSSELL DATE 2002/05/01	TITLE	XPAK GUIDE RAIL ASSEMBLY (SALES)	
		DRAFT WHERE APPLICABLE MUST REMAIN WITHIN DIMENSIONS	MATERIAL NO. 747320220 DOCUMENT NO. SD-74732-220 SHEET NO. 2 OF 2	MOLEX INCORPORATED		THIS DRAWING CONTAINS INFORMATION THAT IS PROPRIETARY TO MOLEX INCORPORATED AND SHOULD NOT BE USED WITHOUT WRITTEN PERMISSION
	REF					

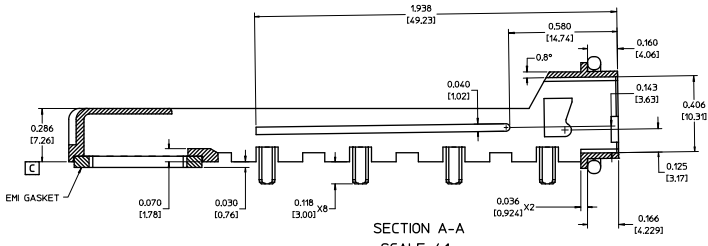
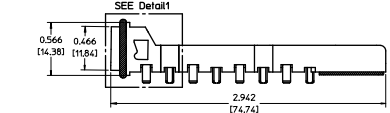
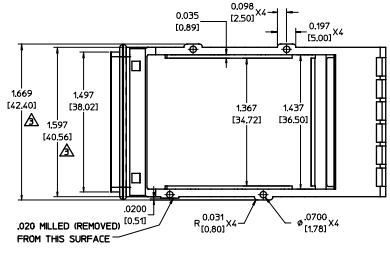
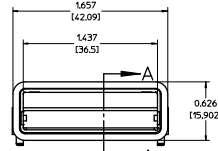
19 18 17 16 15 14 13 12 11 10 9 8 7 6 5 4 3 2 1

20 19 18 17 16 15 14 13 12 11 10 9 8 7 6 5 4 3 2 1

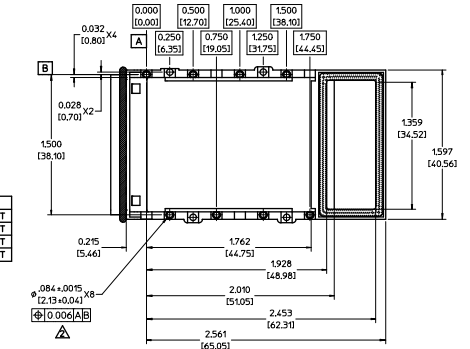


EMI GASKET TO PCB

EMI GASKET FOR FRONT PANEL.
THE EMI GASKET MATERIAL IS A ROUND COMPLIANT, CONDUCTIVE ELASTOMER THAT STRETCHES AROUND THE MOUTH OF THE XPAK RAIL. A BEZEL LOCATED PER THE XPAK MSA WILL MAKE GROUNDING CONTACT WITH THE GASKET TO PROVIDE EMI SHIELDING.

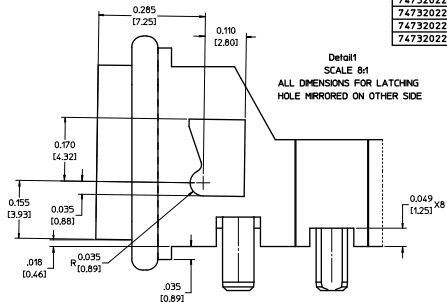


SECTION A-A
SCALE 4:1



MOLEX P/N	DESCRIPTION
747320221	XPAK RAIL ASSEMBLY - WITH ONE MILLED SIDE AND 0.078 ELASTOMER GASKET
747320222	XPAK RAIL ASSEMBLY - WITH ONE MILLED SIDE AND 0.098 ELASTOMER GASKET
747320223	XPAK RAIL ASSEMBLY - WITH ONE MILLED SIDE AND 0.090 ELASTOMER GASKET
747320224	XPAK RAIL ASSEMBLY - WITH ONE MILLED SIDE AND 0.073 ELASTOMER GASKET

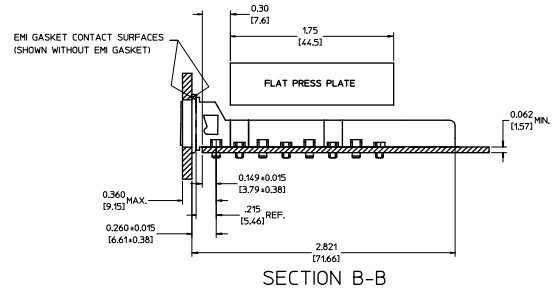
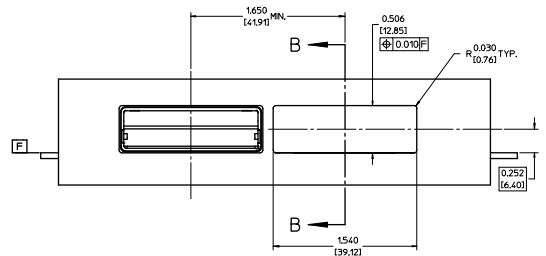
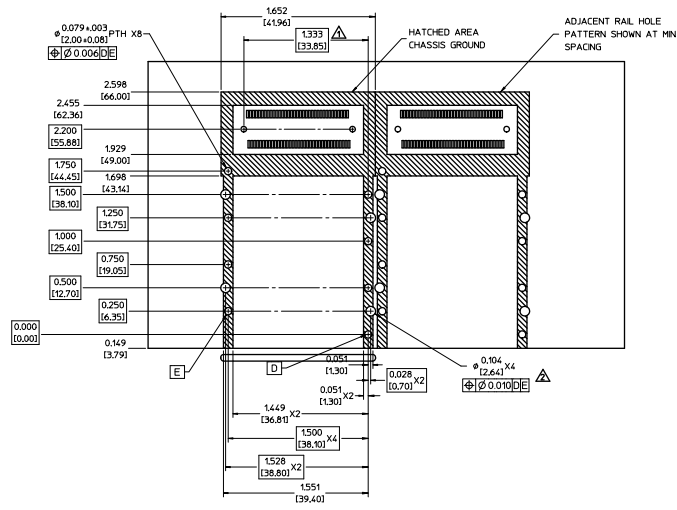
1. MATERIAL: NICKEL PLATED ZINC ALLOY DECAST
2. FOR USE WITH HASL, GOLD OR SILVER IMMERSION FINISHED PTH
3. THESE DIMENSIONS EXCEED MSA MAXIMUM.
4. MINIMUM PCB THICKNESS FOR PRESS FIT ON ONE SIDE 0.062 [1.57]
5. MINIMUM PCB THICKNESS FOR BELLY TO BELLY 0.090 [2.29]



Detail 1
SCALE 8:1
ALL DIMENSIONS FOR LATCHING HOLE MIRROR ON OTHER SIDE

ENTER DESCRIPTION ELEC. NO. 1157/2009-0802 DRAWN: ERM CHECKED: LLOYD APPROVED: BRUSSELL DATE: 2002/05/01 DATE: 2002/05/01 DATE: 2002/05/01	QUALITY SYMBOLS 4 PLACES ±0.05 3 PLACES ±0.13 1 PLACE ±0.25 ANGULAR ±1/2°	GENERAL TOLERANCES (UNLESS SPECIFIED) mm INCH ±0.13 ±0.005 ±0.13 ±0.010 ±0.25 ±0.010	DIMENSION STYLE IN/MM DRAWN BY: KLOYD CHECKED BY: BRUSSELL APPROVED BY: BRUSSELL DATE: 2002/05/01 DATE: 2002/05/01 DATE: 2002/05/01	SCALE: 2:1 DESIGN UNITS: INCH THIRD ANGLE PROJECTION	TITLE: XPAK GUIDE RAIL ASSEMBLY (SALES) W/ MILLED SIDE MOLEX INCORPORATED DOCUMENT NO. SD-74732-221 SHEET NO. 1 OF 2
	DRAFT WHERE APPLICABLE MUST REMAIN WITHIN DIMENSIONS		SEE CHART		THIS DRAWING CONTAINS INFORMATION THAT IS PROPRIETARY TO MOLEX INCORPORATED AND SHOULD NOT BE USED WITHOUT WRITTEN PERMISSION
	MATERIAL NO.		DATE:		MOLEX INCORPORATED
	DATE:		DATE:		MOLEX INCORPORATED

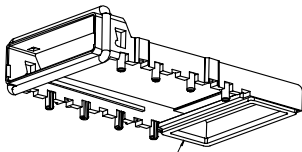
16. From: D.P. AM.T Rev. E 2006/01/5 19 18 17 16 15 14 13 12 11 10 9 8 7 6 5 4 3 2 1



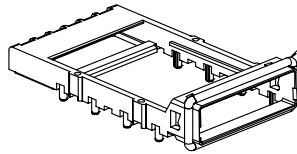
1. SEE DRAWING SD-74441-001 FOR HOST CONNECTOR LAYOUT DETAIL.
2. THESE HOLES CAN BE OMITTED, THEY ARE NOT NEEDED FOR THIS RAIL VERSION.
3. PLATED HOLES CAN BE HASL, GOLD OR SILVER IMMERSION.
4. PCB LAYOUT SHOWN IS FOR SINGLE SIDED MOUNTING ONLY.
5. BELLY TO BELLY MOUNTING REQUIRES ABOVE LAYOUT MIRRORRED ON OPPOSITE SIDE OF PCB AND THE SECONDARY BEZEL OPENING MUST ACCOMMODATE THE PCB THICKNESS VARIATION.

ENTER DESCRIPTION EIT NO. LISY/2009-0802 TUDMANS-ERWIN 2008/09/11 CHERKALLOV 2008/09/12 APPERMAN 2008/09/15 08/11	QUALITY SYMBOLS ▽=0 ▽=0	GENERAL TOLERANCES (UNLESS SPECIFIED) mm INCH 4 PLACES ± --- ± --- 3 PLACES ± 0.13 ± 0.010 2 PLACES ± 0.25 ± --- 1 PLACE ± 0.25 ± --- ANGULAR ± 1/2°	DIMENSION STYLE IN/MM DRAWN BY DATE KLOYD 2002/05/01 CHECKED BY DATE BRUSSELL 2002/05/01 APPROVED BY DATE BRUSSELL 2002/05/01 MATERIAL NO. SEE CHART SIZE D	SCALE 2:1 DESIGN UNITS INCH THIRD ANGLE PROJECTION	TITLE XPAK GUIDE RAIL ASSEMBLY (SALES) W/ MILLED SIDE MOLEX MOLEX INCORPORATED DOCUMENT NO. SD-74732-221 SHEET NO. 2 OF 2
	DRAFT WHERE APPLICABLE MUST REMAIN WITHIN DIMENSIONS				
	THIS DRAWING CONTAINS INFORMATION THAT IS PROPRIETARY TO MOLEX INCORPORATED AND SHOULD NOT BE USED WITHOUT WRITTEN PERMISSION				
	0747320220				

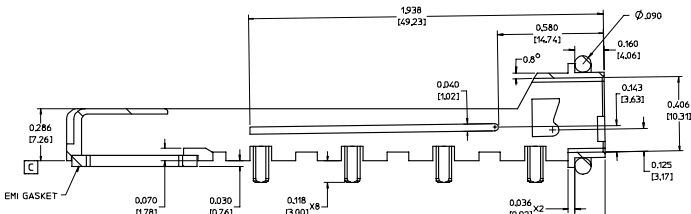
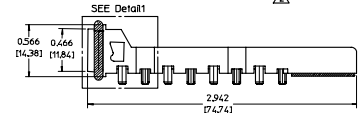
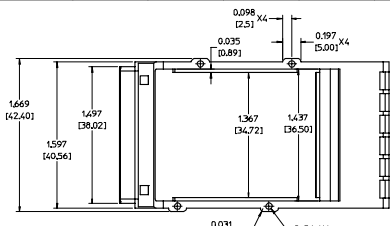
20 19 18 17 16 15 14 13 12 11 74732 9 8 7 6 5 4 3 2 1



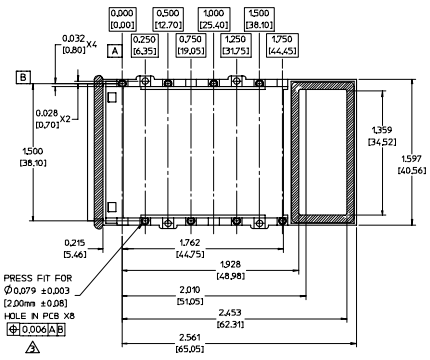
EMI GASKET TO PCB



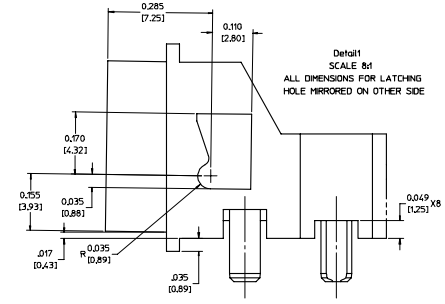
EMI GASKET FOR FRONT PANEL



SECTION A-A
SCALE 4:1



PRESS FIT FOR
Ø 0.079 ± 0.003
(2.00mm ± 0.08)
HOLE IN PCB X8
Ø 0.066 [A]
A



Detail
SCALE 8:1
ALL DIMENSIONS FOR LATCHING
HOLE MIRROR ON OTHER SIDE

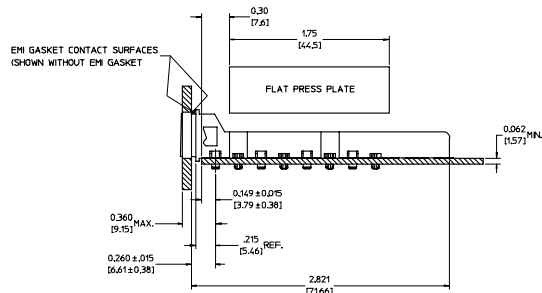
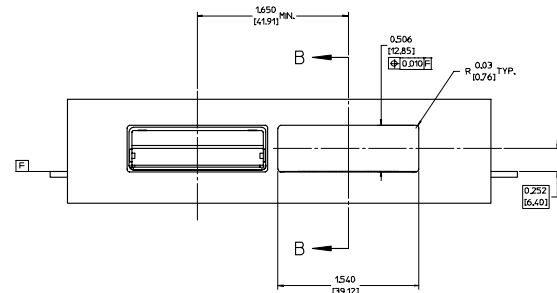
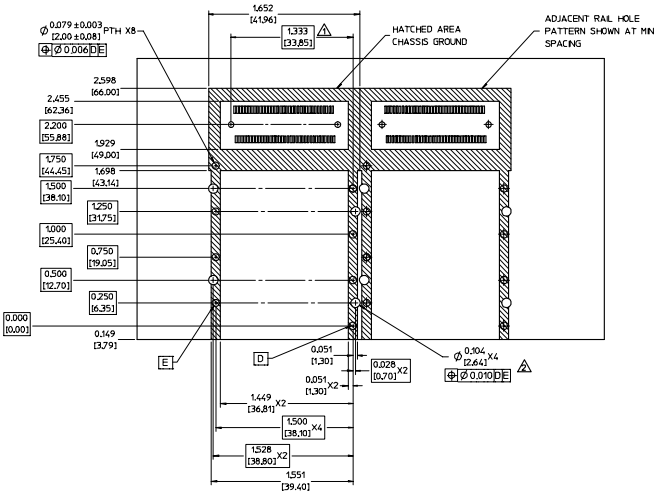
1. MATERIAL: NICKEL PLATED ZINC ALLOY DIECAST
2. HOLE TAPPED FOR 2-56 SCREW. SCREW USE IS OPTIONAL
3. FOR USE WITH HASL, GOLD OR SILVER IMMERSION FINISHED PTH
4. THESE DIMENSIONS EXCEED MSA MAXIMUM
5. MINIMUM PCB THICKNESS FOR PRESS FIT ON ONE SIDE 0.062 [1.57]
6. MINIMUM PCB THICKNESS FOR BELLY TO BELLY 0.090 [2.29]

EC. NO. USY2006-0182 DRAWN BY ERWIN 2006/07/06 CHKD BY BRUSSELL 2006/07/06 APPR. BY BRUSSELL 2006/07/06	QUALITY SYMBOLS 0 0	GENERAL TOLERANCES (UNLESS SPECIFIED)	SCALE 2:1	DESIGN UNITS INCH	THIRD ANGLE PROJECTION	REVISE ON CAD ONLY
		4 PLACES ± --- IN --- 3 PLACES ± --- IN --- 2 PLACES ± 0.13 IN ± 0.10 1 PLACE ± 0.25 IN ± ---	IN/MM	DATE 2006/06/23		
		DRAFT WHERE APPLICABLE MUST REMAIN WITHIN DIMENSIONS	APPROVED BY BRUSSELL 2006/06/23	TITLE XPAK GUIDE RAIL ASSEMBLY (SALES)	MATERIAL NO. 747320220	DOCUMENT NO. ISD-74732-223
			CHECKED BY JERWIN 2006/06/23	DATE 2006/06/23	Molex MOLEX INCORPORATED	
					SHEET NO. 1 OF 2	
					THIS DRAWING CONTAINS INFORMATION THAT IS PROPRIETARY TO MOLEX INCORPORATED AND SHOULD NOT BE USED WITHOUT WRITTEN PERMISSION	

19 18 17 16 15 14 13 12 11 10 9 8 7 6 5 4 3 2 1

20 19 18 17 16 15 14 13 12 11 10 9 8 7 6 5 4 3 2 1

L
K
J
I
H
G
F
E
D
C
B
A



SECTION B-B

1. SEE DRAWING SD-74441-001 FOR HOST CONNECTOR LAYOUT DETAIL.
2. FINISHED THROUGH HOLE DIAMETER. CAN BE PLATED OR NON-PLATED.
3. PLATED HOLES CAN BE HASL, GOLD OR SILVER IMERSION.
4. PCB LAYOUT SHOWN IS FOR SINGLE SIDED MOUNTING ONLY.
5. BELLY TO BELLY MOUNTING REQUIRES ABOVE LAYOUT MIRRORRED ON OPPOSITE SIDE OF PCB AND THE SECONDARY BEZEL OPENING MUST ACCOMMODATE THE PCB THICKNESS VARIATION.

EC. NO. USY2006-0182 DRAWN BY ERWIN 2006/07/06 CHECKED BY BRUSSELL 2006/07/06 APPROVED BY BRUSSELL 2006/07/06	QUALITY SYMBOLS	GENERAL TOLERANCES (UNLESS SPECIFIED)	SCALE 2:1	DESIGN UNITS INCH	THIRD ANGLE PROJECTION	REVISE ON CAD ONLY
	0 0	4 PLACES ± --- ± ---	mm INCH	DESIGN STYLE IN/MM	TITLE XPAK GUIDE RAIL ASSEMBLY (SALES)	MOLEX INCORPORATED MATERIAL NO. 747320220 DOCUMENT NO. ISD-74732-223 SHEET NO. 2 OF 2
		3 PLACES ± --- ± 0.05	DRAWN BY JERWIN	DATE 2006/06/23		
		2 PLACES ± 0.13 ± 0.10	CHECKED BY B. RUSSELL	DATE 2006/06/23		
1 PLACE ± 0.25 ± ---	APPROVED BY B. RUSSELL	DATE 2006/06/23				
DRAFT WHERE APPLICABLE MUST REMAIN WITHIN DIMENSIONS		ANGULAR ±1/2°		THIS DRAWING CONTAINS INFORMATION THAT IS PROPRIETARY TO MOLEX INCORPORATED AND SHOULD NOT BE USED WITHOUT WRITTEN PERMISSION.		

19 18 17 16 15 14 13 12 11 10 9 8 7 6 5 4 3 2 1