

## Excellent Integrated System Limited

Stocking Distributor

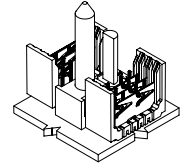
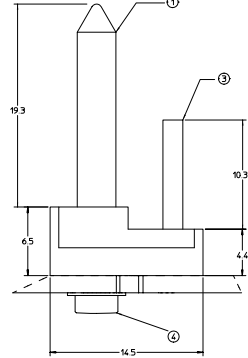
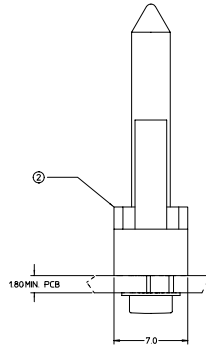
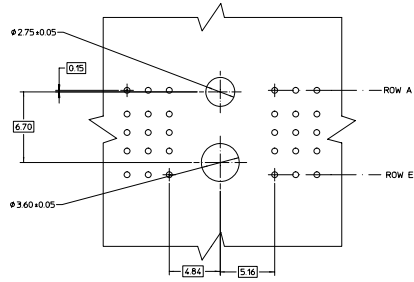
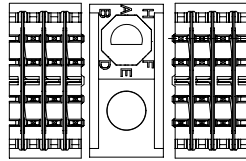
Click to view price, real time Inventory, Delivery & Lifecycle Information:

[Molex Connector Corporation](#)  
[0749525001](#)

For any questions, you can email us directly:

[sales@integrated-circuit.com](mailto:sales@integrated-circuit.com)

MATERIAL NUMBER PCB THICKNESS >4.0 - 9.0	MATERIAL NUMBER PCB THICKNESS 1.8 - 4.0	BUSHING CLOCK POSITION
74952-5901	74952-5001	A
74952-5902	74952-5002	B
74952-5903	74952-5003	C
74952-5904	74952-5004	D
74952-5905	74952-5005	E
74952-5906	74952-5006	F
74952-5907	74952-5007	G
74952-5908	74952-5008	H



**BILL OF MATERIAL FOR 74952-50\*\***

ITEM	DESCRIPTION	QTY.
1	GUIDE PIN	1
2	GUIDANCE & POLARIZING MODULE	1
3	KEYING PIN	1
4	SCREW & WASHER (PCB 1.8-4.0)	1

**BILL OF MATERIAL FOR 74952-59\*\***

ITEM	DESCRIPTION	QTY.
1	GUIDE PIN	1
2	GUIDANCE & POLARIZING MODULE	1
3	KEYING PIN	1
4	SCREW & WASHER (PCB >4.0-9.0)	1

**NOTES**

- 1 MATERIAL:  
HOUSING: LIQUID CRYSTAL POLYMER (LCP),  
COLOR: BLACK  
GUIDE PIN / KEYING PIN: STAINLESS STEEL
- 2 THIS PART CONFORMS TO MOLEX PRODUCT SPECIFICATION PS-74031-999
- 3 PACKAGING: STANDARD BULK PACK, 100 PER BAG  
PACKAGE SCREW SEPARATELY.

EC NO. UDT2002-0216 DESIGNED BY: M. S. S. / 2000/12/19 CHECKED BY: S. S. S. / 2000/12/19 APPR. (DRAWER): S. S. S. / 2000/12/20	QUALITY SYMBOLS	GENERAL TOLERANCES (UNLESS SPECIFIED)	SCALE 6:1	DESIGN UNITS METRIC	THIRD ANGLE PROJECTION	REVISE ON CAD ONLY																		
		<table border="1"> <tr> <th></th> <th>mm</th> <th>INCH</th> </tr> <tr> <td>4 PLACES</td> <td>± 0.15</td> <td>± 0.006</td> </tr> <tr> <td>3 PLACES</td> <td>± 0.20</td> <td>± 0.008</td> </tr> <tr> <td>2 PLACES</td> <td>± 0.30</td> <td>± 0.012</td> </tr> <tr> <td>1 PLACE</td> <td>± 0.50</td> <td>± 0.020</td> </tr> <tr> <td colspan="3">ANGULAR ± 2°</td> </tr> </table>		mm	INCH	4 PLACES	± 0.15	± 0.006	3 PLACES	± 0.20	± 0.008	2 PLACES	± 0.30	± 0.012	1 PLACE	± 0.50	± 0.020	ANGULAR ± 2°			MM ONLY			
		mm	INCH																					
	4 PLACES	± 0.15	± 0.006																					
3 PLACES	± 0.20	± 0.008																						
2 PLACES	± 0.30	± 0.012																						
1 PLACE	± 0.50	± 0.020																						
ANGULAR ± 2°																								
			DRAWN BY NMARTIN	DATE 01/12/11	TITLE: BACKPLANE GUIDANCE AND POLARIZING MODULE 5 ROW HSD SALES DRAWING																			
			CHECKED BY SREED	DATE 01/12/11	MOLEX INCORPORATED																			
			APPROVED BY CBIXLER	DATE 01/12/11	MATERIAL NO. SEE CHART	DOCUMENT NO. SD-74952-002																		
DRAFT WHERE APPLICABLE MUST REMAIN WITHIN DIMENSIONS			THIS DRAWING CONTAINS INFORMATION THAT IS PROPRIETARY TO MOLEX INCORPORATED AND SHOULD NOT BE USED WITHOUT WRITTEN PERMISSION																					
						SHEET NO. 1 OF 1																		