

Excellent Integrated System Limited

Stocking Distributor

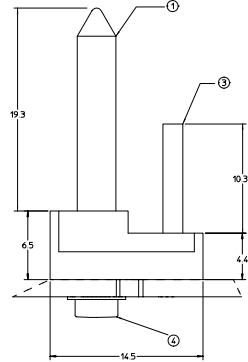
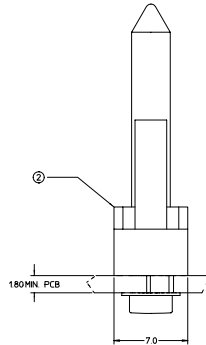
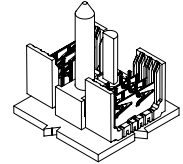
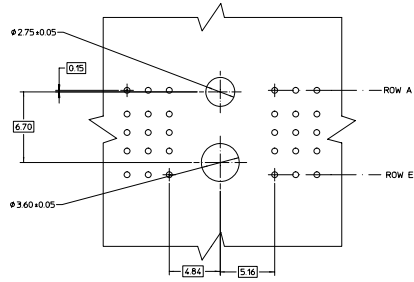
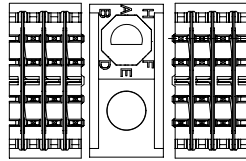
Click to view price, real time Inventory, Delivery & Lifecycle Information:

[Molex Connector Corporation](#)
[0749525008](#)

For any questions, you can email us directly:

sales@integrated-circuit.com

MATERIAL NUMBER PCB THICKNESS >4.0 - 9.0	MATERIAL NUMBER PCB THICKNESS 1.8 - 4.0	BUSHING CLOCK POSITION
74952-5901	74952-5001	A
74952-5902	74952-5002	B
74952-5903	74952-5003	C
74952-5904	74952-5004	D
74952-5905	74952-5005	E
74952-5906	74952-5006	F
74952-5907	74952-5007	G
74952-5908	74952-5008	H



BILL OF MATERIAL FOR 74952-50**

ITEM	DESCRIPTION	QTY.
1	GUIDE PIN	1
2	GUIDANCE & POLARIZING MODULE	1
3	KEYING PIN	1
4	SCREW & WASHER (PCB 1.8-4.0)	1

BILL OF MATERIAL FOR 74952-59**

ITEM	DESCRIPTION	QTY.
1	GUIDE PIN	1
2	GUIDANCE & POLARIZING MODULE	1
3	KEYING PIN	1
4	SCREW & WASHER (PCB >4.0-9.0)	1

NOTES

- MATERIAL:
HOUSING: LIQUID CRYSTAL POLYMER (LCP),
COLOR: BLACK
GUIDE PIN / KEYING PIN: STAINLESS STEEL
- THIS PART CONFORMS TO MOLEX PRODUCT SPECIFICATION PS-74031-999
- PACKAGING: STANDARD BULK PACK, 100 PER BAG
PACKAGE SCREW SEPARATELY.

EC NO. UDT2002-0216 DESIGNED BY: M. S. S. S. S. CHECKED BY: S. S. S. S. S. APPR. (DRAWER): S. S. S. S. S. APPR. (CHECKER): S. S. S. S. S.	QUALITY SYMBOLS	GENERAL TOLERANCES (UNLESS SPECIFIED)	SCALE: 6:1	DESIGN UNITS: METRIC	THIRD ANGLE PROJECTION	REVISE ON CAD ONLY																		
		<table border="1"> <tr> <th></th> <th>mm</th> <th>INCH</th> </tr> <tr> <td>4 PLACES</td> <td>± 0.15</td> <td>± 0.006</td> </tr> <tr> <td>3 PLACES</td> <td>± 0.20</td> <td>± 0.008</td> </tr> <tr> <td>2 PLACES</td> <td>± 0.30</td> <td>± 0.012</td> </tr> <tr> <td>1 PLACE</td> <td>± 0.50</td> <td>± 0.020</td> </tr> <tr> <td colspan="3">ANGULAR ± 2°</td> </tr> </table>		mm	INCH	4 PLACES	± 0.15	± 0.006	3 PLACES	± 0.20	± 0.008	2 PLACES	± 0.30	± 0.012	1 PLACE	± 0.50	± 0.020	ANGULAR ± 2°			MM ONLY			
		mm	INCH																					
	4 PLACES	± 0.15	± 0.006																					
3 PLACES	± 0.20	± 0.008																						
2 PLACES	± 0.30	± 0.012																						
1 PLACE	± 0.50	± 0.020																						
ANGULAR ± 2°																								
	DRAFT WHERE APPLICABLE MUST REMAIN WITHIN DIMENSIONS	DRAWN BY: NMARTIN DATE: 01/12/11 CHECKED BY: SREED DATE: 01/12/11 APPROVED BY: CBIXLER DATE: 01/12/11																						
					TITLE: BACKPLANE GUIDANCE AND POLARIZING MODULE 5 ROW HSD SALES DRAWING MOLEX INCORPORATED MATERIAL NO. SEE CHART DOCUMENT NO. SD-74952-002 SHEET NO. 1 OF 1																			