

Excellent Integrated System Limited

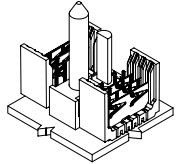
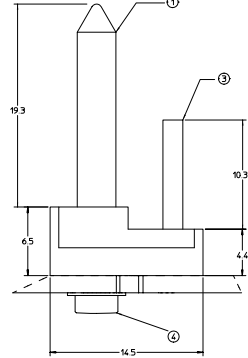
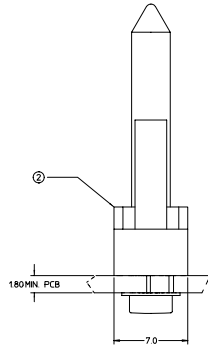
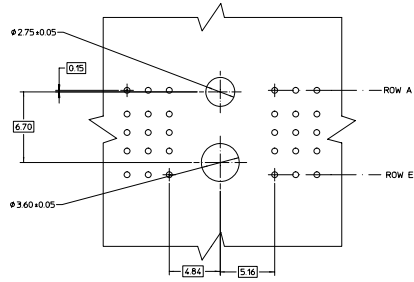
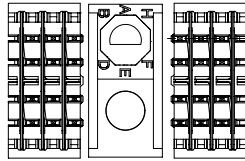
Stocking Distributor

Click to view price, real time Inventory, Delivery & Lifecycle Information:

[Molex Connector Corporation](#)
[0749525905](#)

For any questions, you can email us directly:
sales@integrated-circuit.com

MATERIAL NUMBER PCB THICKNESS >4.0 - 9.0	MATERIAL NUMBER PCB THICKNESS 1.8 - 4.0	BUSHING CLOCK POSITION
74952-5901	74952-5001	A
74952-5902	74952-5002	B
74952-5903	74952-5003	C
74952-5904	74952-5004	D
74952-5905	74952-5005	E
74952-5906	74952-5006	F
74952-5907	74952-5007	G
74952-5908	74952-5008	H



BILL OF MATERIAL FOR 74952-50**

ITEM	DESCRIPTION	QTY.
1	GUIDE PIN	1
2	GUIDANCE & POLARIZING MODULE	1
3	KEYING PIN	1
4	SCREW & WASHER (PCB 1.8-4.0)	1

BILL OF MATERIAL FOR 74952-59**

ITEM	DESCRIPTION	QTY.
1	GUIDE PIN	1
2	GUIDANCE & POLARIZING MODULE	1
3	KEYING PIN	1
4	SCREW & WASHER (PCB >4.0-9.0)	1

NOTES

- MATERIAL:
HOUSING: LIQUID CRYSTAL POLYMER (LCP),
COLOR: BLACK
GUIDE PIN / KEYING PIN: STAINLESS STEEL
- THIS PART CONFORMS TO MOLEX PRODUCT SPECIFICATION PS-74031-999
- PACKAGING: STANDARD BULK PACK, 100 PER BAG
PACKAGE SCREW SEPARATELY.

EC NO. UDT2002-0216 DESIGNED BY: M. S. S. / 2000/12/19 CHECKED BY: S. S. S. / 2000/12/19 APPR. (DRAWER): S. S. S. / 2000/12/20	QUALITY SYMBOLS	GENERAL TOLERANCES (UNLESS SPECIFIED)	SCALE 6:1	DESIGN UNITS METRIC	THIRD ANGLE PROJECTION	REVISE ON CAD ONLY
	0 0	mm	INCH	DIMENSION STYLE		
		4 PLACES ± --- ± ---	3 PLACES ± --- ± ---	MM ONLY		
		2 PLACES ± --- ± ---	1 PLACE ± --- ± ---	DRAWN BY NMARTIN	DATE 01/12/11	TITLE: BACKPLANE GUIDANCE AND POLARIZING MODULE 5 ROW HSD SALES DRAWING
ANGULAR ± 2 °		APPROVED BY CBIXLER		DATE 01/12/11	MATERIAL NO. SEE CHART	DOCUMENT NO. SD-74952-002
DRAFT WHERE APPLICABLE MUST REMAIN WITHIN DIMENSIONS		THIS DRAWING CONTAINS INFORMATION THAT IS PROPRIETARY TO MOLEX INCORPORATED AND SHOULD NOT BE USED WITHOUT WRITTEN PERMISSION				
						SHEET NO. 1 OF 1