

## **Excellent Integrated System Limited**

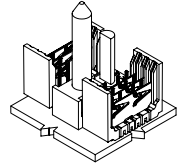
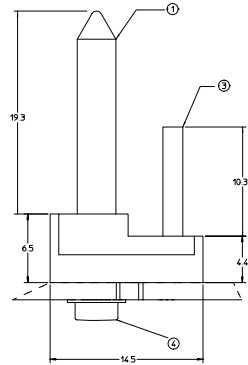
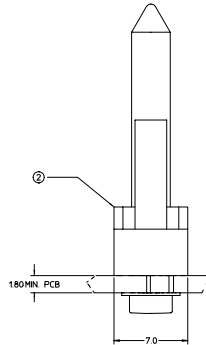
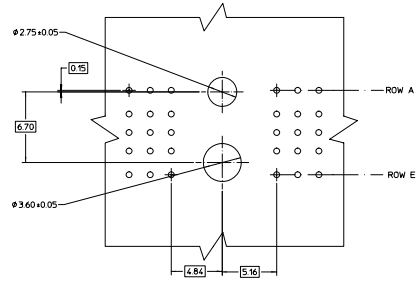
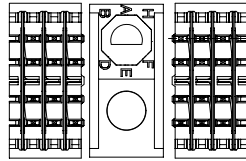
Stocking Distributor

Click to view price, real time Inventory, Delivery & Lifecycle Information:

[Molex Connector Corporation](#)  
[0749525906](#)

For any questions, you can email us directly:  
[sales@integrated-circuit.com](mailto:sales@integrated-circuit.com)

MATERIAL NUMBER PCB THICKNESS >4.0 - 9.0	MATERIAL NUMBER PCB THICKNESS 1.8 - 4.0	BUSHING CLOCK POSITION
74952-5901	74952-5001	A
74952-5902	74952-5002	B
74952-5903	74952-5003	C
74952-5904	74952-5004	D
74952-5905	74952-5005	E
74952-5906	74952-5006	F
74952-5907	74952-5007	G
74952-5908	74952-5008	H



BILL OF MATERIAL FOR 74952-50\*\*

ITEM	DESCRIPTION	QTY.
1	GUIDE PIN	1
2	GUIDANCE & POLARIZING MODULE	1
3	KEYING PIN	1
4	SCREW & WASHER (PCB 1.8-4.0)	1

BILL OF MATERIAL FOR 74952-59\*\*

ITEM	DESCRIPTION	QTY.
1	GUIDE PIN	1
2	GUIDANCE & POLARIZING MODULE	1
3	KEYING PIN	1
4	SCREW & WASHER (PCB >4.0-9.0)	1

NOTES

- MATERIAL:  
HOUSING: LIQUID CRYSTAL POLYMER (LCP),  
COLOR: BLACK  
GUIDE PIN / KEYING PIN: STAINLESS STEEL
- THIS PART CONFORMS TO MOLEX PRODUCT SPECIFICATION PS-74031-999
- PACKAGING: STANDARD BULK PACK, 100 PER BAG  
PACKAGE SCREW SEPARATELY.

EC NO. UDT2002-0216 DESIGNED BY: ED CHECKED BY: M APPR. BY: M DATE: 2000/12/19 DATE: 2000/12/19 DATE: 2000/12/20	QUALITY SYMBOLS	GENERAL TOLERANCES (UNLESS SPECIFIED)	SCALE 6:1	DESIGN UNITS METRIC	THIRD ANGLE PROJECTION	REVISE ON CAD ONLY	
	0 0	mm	INCH	DIMENSION STYLE			
		4 PLACES ±	3 PLACES ±	2 PLACES ±	1 PLACE ±	MM ONLY	
		ANGULAR ± 2°	DRAWN BY: NMARTIN DATE: 01/12/11				
DRAFT WHERE APPLICABLE		APPROVED BY: CBIXLER DATE: 01/12/11		MATERIAL NO. SEE CHART			
MUST REMAIN WITHIN DIMENSIONS		THIS DRAWING CONTAINS INFORMATION THAT IS PROPRIETARY TO MOLEX INCORPORATED AND SHOULD NOT BE USED WITHOUT WRITTEN PERMISSION		TITLE: BACKPLANE GUIDANCE AND POLARIZING MODULE 5 ROW HSD SALES DRAWING MOLEX INCORPORATED DOCUMENT NO. SD-74952-002 SHEET NO. 1 OF 1			