

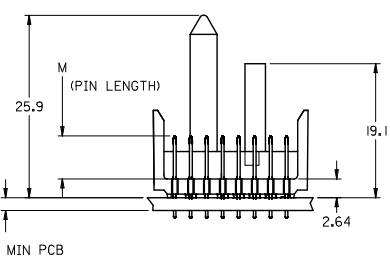
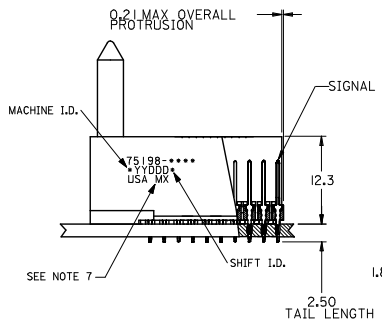
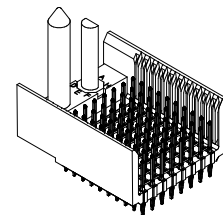
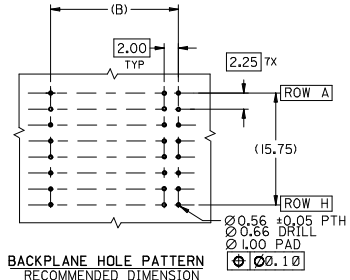
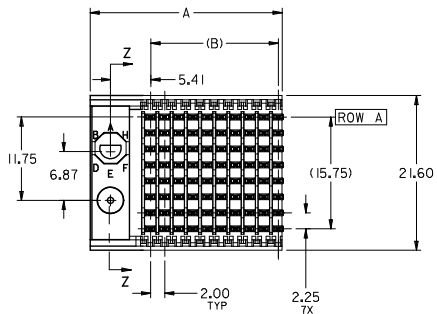
## **Excellent Integrated System Limited**

Stocking Distributor

Click to view price, real time Inventory, Delivery & Lifecycle Information:

[Molex Connector Corporation](#)  
[0751981011](#)

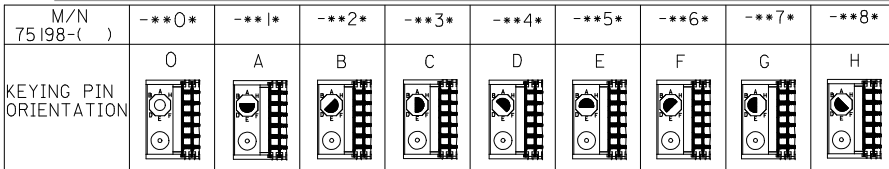
For any questions, you can email us directly:  
[sales@integrated-circuit.com](mailto:sales@integrated-circuit.com)



- NOTES:
1. MATERIALS:  
HOUSING - LIQUID CRYSTAL POLYMER (LCP),  
GLASS-FILLED, UL 94V-0, COLOR: BLACK  
SIGNAL PIN - COPPER ALLOY
  2. FINISHES:  
CONTACT AREA: SELECTIVE GOLD (Au)  
PCB TAILS: SELECTIVE MATTE TIN (Sn)  
NICKEL (Ni) OVERALL.
  3. THIS PART CONFORMS TO MOLEX PRODUCT SPECIFICATION PS-74031-999
  4. FOR MIXED CONTACT LENGTHS CONSULT MOLEX FOR AVAILABILITY
  5. FOR SPECIFIC MATERIAL NUMBERS & MATING INFORMATION REFER TO SHEET 2
  6. PACKAGE PER PK-74061-003
  7. MARK PART WITH PART NUMBER & DATE CODE APPROXIMATELY WHERE SHOWN
  8. MAPS (MOLEX ADVANCED PLATING SYSTEM)

THE PRIMARY CARTON WITH A LABEL STATING "ELV AND RoHS COMPLAINT" IS LEAD FREE. CARTONS WITHOUT THIS LABEL MAY CONTAIN LEAD.

|   |                                      |                                       |  |                            |                             |  |                              |                        |
|---|--------------------------------------|---------------------------------------|--|----------------------------|-----------------------------|--|------------------------------|------------------------|
| LEAD FREE CONVERSION<br>EC NO: LCP2010-0687<br>DRAWINGS: 2012/08/24<br>CHK: MOLLER 2012/11/21<br>APPR: MILLER 2012/12/14      | QUALITY SYMBOLS<br>▽=0<br>▽=0<br>▽=0 | GENERAL TOLERANCES (UNLESS SPECIFIED) |  | DIMENSION STYLE<br>MM ONLY |                             | SCALE<br>2.5:1   | DESIGN UNITS<br>METRIC       | THIRD ANGLE PROJECTION |
|   |                                      | mm                                    | INCH   | DRAWN BY<br>JMELTON        | DATE<br>2010/05/19          | TITLE<br>VHDM LITE 8 ROW<br>SIGNAL END BACKPLANE<br>SALES ASSEMBLY |                              |                        |
| REV<br>G  | 4 PLACES ±                           | 3 PLACES ±                            | 2 PLACES ±   | 1 PLACE ±                  | 0 PLACE ±                   | APPROVED BY<br>SMILLER   |                              | DATE<br>2010/07/14     |
|   | ANGULAR ±1/2°                        |                                       | DRAFT WHERE APPLICABLE MUST REMAIN WITHIN DIMENSIONS |                            | MATERIAL NO.<br>SEE SHEET 2 |  | DOCUMENT NO.<br>SD-75198-001 | SHEET NO.<br>1 OF 2    |
| THIS DRAWING CONTAINS INFORMATION THAT IS PROPRIETARY TO MOLEX INCORPORATED AND SHOULD NOT BE USED WITHOUT WRITTEN PERMISSION |                                      |                                       |  |                            |                             |  |                              |                        |

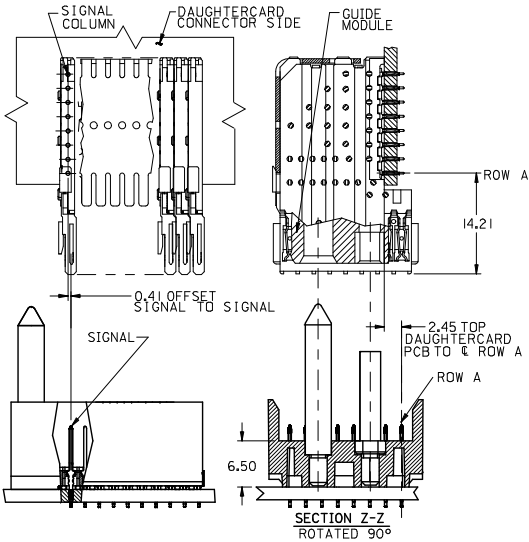


75198 - \* \* \* \*

NUMBER OF COLUMNS/PLATING  
 10 = 10 COLUMN MATTE TIN (FORMERLY TIN/LEAD)  
 25 = 25 COLUMN MATTE TIN (FORMERLY TIN/LEAD)  
 60 = 10 COLUMN MATTE TIN (MAPS)  
 75 = 25 COLUMN MATTE TIN (MAPS)  
 90 = 10 COLUMN MATTE TIN  
 85 = 25 COLUMN MATTE TIN

PIN HEIGHT  
 1 = 4.75  
 2 = 6.25  
 3 = 4.25  
 4 = 5.15

| PART NUMBER | COLUMN | NUMBER OF SIGNAL PIN | NUMBER OF SHIELD | A     | B     | M    | GOLD THICKNESS MICROMETER | TIN THICKNESS MICROMETER |
|-------------|--------|----------------------|------------------|-------|-------|------|---------------------------|--------------------------|
| 75198-60*1  |        |                      |                  |       |       |      | 0.25 MAPS                 | 0.76-152                 |
| 75198-*0*1  | 10     | 80                   | 0                | 27.00 | 18.00 | 4.75 | 0.76                      |                          |
| 75198-75*1  |        |                      |                  |       |       |      | 0.25 MAPS                 |                          |
| 75198-*5*1  | 25     | 200                  | 0                | 57.00 | 48.00 | 4.75 | 0.76                      |                          |
| 75198-60*2  |        |                      |                  |       |       |      | 0.25 MAPS                 |                          |
| 75198-*0*2  | 10     | 80                   | 0                | 27.00 | 18.00 | 6.25 | 0.76                      |                          |
| 75198-75*2  |        |                      |                  |       |       |      | 0.25 MAPS                 |                          |
| 75198-*5*2  | 25     | 200                  | 0                | 57.00 | 48.00 | 6.25 | 0.76                      |                          |
| 75198-60*3  |        |                      |                  |       |       |      | 0.25 MAPS                 |                          |
| 75198-*0*3  | 10     | 80                   | 0                | 27.00 | 18.00 | 4.25 | 0.76                      |                          |
| 75198-75*3  |        |                      |                  |       |       |      | 0.25 MAPS                 |                          |
| 75198-*5*3  | 25     | 200                  | 0                | 57.00 | 48.00 | 4.25 | 0.76                      |                          |
| 75198-60*4  |        |                      |                  |       |       |      | 0.25 MAPS                 |                          |
| 75198-*0*4  | 10     | 80                   | 0                | 27.00 | 18.00 | 5.15 | 0.76                      |                          |
| 75198-75*4  |        |                      |                  |       |       |      | 0.25 MAPS                 |                          |
| 75198-*5*4  | 25     | 200                  | 0                | 57.00 | 48.00 | 5.15 | 0.76                      |                          |



|  |                                      |  |         |                            |                    |  |                              |                        |  |
|--|--------------------------------------|--|---------|----------------------------|--------------------|--|------------------------------|------------------------|--|
| SEE SHEET 1<br>EC NO: UCP2015-0687<br>DRAWINGS: 2012/08/24<br>CHKD: MWLFE 2012/11/21<br>APPR: SMILLER 2012/12/14 | QUALITY SYMBOLS<br>∇=0<br>∇=0<br>∇=0 | GENERAL TOLERANCES (UNLESS SPECIFIED)  |         | DIMENSION STYLE<br>MM ONLY |                    | SCALE<br>2.5:1   | DESIGN UNITS<br>METRIC       | THIRD ANGLE PROJECTION |  |
|  |                                      | 4 PLACES ± --- ± ---<br>3 PLACES ± --- ± ---<br>2 PLACES ± --- ± ---<br>1 PLACE ± --- ± ---<br>0 PLACE ± --- ± --- | mm INCH | DRAWN BY<br>JMELTON        | DATE<br>2010/05/19 | TITLE<br>VHDM LITE 8 ROW SIGNAL END BACKPLANE SALES ASSEMBLY |                              |                        |  |
|  |                                      | ANGULAR ±1/2°  |         | CHECKED BY<br>SDANNELLEY   | DATE<br>2010/05/19 | molex  |                              |                        |  |
|  |                                      | DRAFT WHERE APPLICABLE MUST REMAIN WITHIN DIMENSIONS   |         | APPROVED BY<br>SMILLER     | DATE<br>2010/07/14 | MATERIAL NO.<br>SEE TABLE                                    | DOCUMENT NO.<br>SD-75198-001 | SHEET NO.<br>2 OF 2    |  |