

Excellent Integrated System Limited

Stocking Distributor

Click to view price, real time Inventory, Delivery & Lifecycle Information:

[Molex Connector Corporation](#)
[0399810319](#)

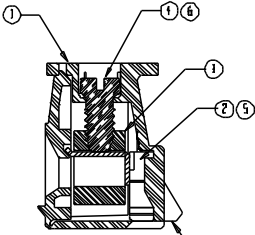
For any questions, you can email us directly:

sales@integrated-circuit.com

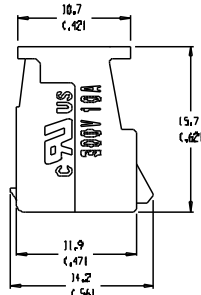
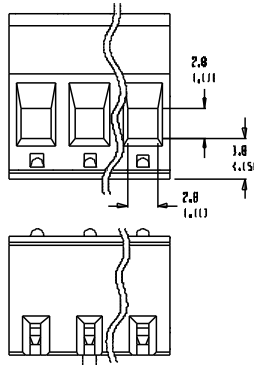
SD-39980-010

ALIGNMENT FEATURE PLACED
IN LINE WITH SCREWDRIVER
REMOVAL SLOT

SEE NOTES

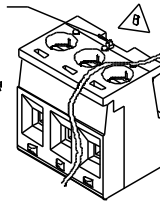


SECTION Z-Z



NOTES:
SNAP FEATURES
2 CKT 2 SNAPS
3-24 CKT 3 SNAPS
LOCATED ON ENDS AND
ALIGNED WITH SCREWDRIVER
REMOVAL SLOT

WINDOW ON PLUG
ALIGNS WITH SNAP
ON HEADER ALWAYS
CENTERED ON PART
OR ONE CIRCUIT TO
THE LEFT OF CENTER



AUXILIARY VIEW
SCALE 2:1

MATERIAL NO. (OPT. - G30)	MATERIAL NO. 1STANDARD01	NUMBER OF CIRCUITS *XX*	DIM. "A"	DIM. "B"	DIM. "C"
399810302	399800302	02	10.42	1.430	5.08
399810303	399800303	03	16.00	1.630	10.16
399810304	399800304	04	21.08	1.830	15.24
399810305	399800305	05	26.16	1.930	20.34
399810306	399800306	06	31.24	1.930	25.40
399810307	399800307	07	36.32	1.930	30.48
399810308	399800308	08	41.40	1.930	35.56
399810309	399800309	09	46.48	1.930	40.64
399810310	399800310	10	51.56	1.930	45.72
399810311	399800311	11	56.64	1.930	50.80
399810312	399800312	12	61.72	1.930	55.88
399810313	399800313	13	66.80	1.930	60.96
399810314	399800314	14	71.88	1.930	66.04
399810315	399800315	15	76.96	1.930	71.12
399810316	399800316	16	82.04	1.930	76.20
399810317	399800317	17	87.12	1.930	81.28
399810318	399800318	18	92.20	1.930	86.36
399810319	399800319	19	97.28	1.930	91.44
399810320	399800320	20	102.36	1.930	96.52
399810321	399800321	21	107.44	1.930	101.60
399810322	399800322	22	112.52	1.930	106.68
399810323	399800323	23	117.60	1.930	111.76
399810324	399800324	24	122.68	1.930	116.84

- NOTES:
1. MATERIALS SEE TABLE
2. FINISHES: SEE TABLE
3. PRODUCT SPECIFICATIONS NOT REQUIRED
4. PACKAGING: NOT REQUIRED
5. MATES WITH 98 SERIES HEADERS.

ITEM	QTY.	DESCRIPTION	MATERIAL	FINISH
6	XX	SCREW, M3 X 0.5, SLOTTED (1-830 OPTION)	PHOS. BRONZE	TIN
5	XX	TERMINAL (1-630 OPTION)	PHOS. BRONZE	GOLD
4	XX	SCREW, M3 X 0.5, SLOTTED	STEEL	ZN, CLEAR CHROMATE
3	XX	RISING CASE	BRASS	NICKEL
2	XX	TERMINAL	PHOS. BRONZE	TIN
1	1	INSULATOR	NYLON	BLACK

EE No. 11499
Date: 3-31-04
REV: B

QUALITY SYMBOLS:
MAJOR
OPTIONAL
SPEC

GENERAL TOLERANCES UNLESS SPECIFIED:

F PLACES	±0.015
M PLACES	±0.005
S PLACES	±0.01
L PLACES	±0.3

 ANGULARITY ±2°

SCALE: 3:1
DESIGN UNIT: mm [X] INCH
DRAWN BY & DATE: R. KEMP 3-27-02
CHECKED BY & DATE: AMP 3-27-02
APPROVED BY & DATE: P. WALZ 3-27-02
CAD FILENAME: 9809XX

THIRD ANGLE PROJECTION

TITLE: SR EUROSTYLE PLUG, ASSEMBLY 5.08 (.2001)

MOLEX INCORPORATED

WATERL. NO. SEE CHART
DRAWING NO. SD-39980-010
SHEET NO. 1 OF 1

THIS DRAWING CONTAINS INFORMATION THAT IS PROPRIETARY TO MOLEX INCORPORATED AND SHOULD NOT BE USED WITHOUT WRITTEN PERMISSION.

PROJECT NO.	I	REV

REVISION ON CAD ONLY