

Excellent Integrated System Limited

Stocking Distributor

Click to view price, real time Inventory, Delivery & Lifecycle Information:

[Molex Connector Corporation](#)
[0399810320](#)

For any questions, you can email us directly:

sales@integrated-circuit.com

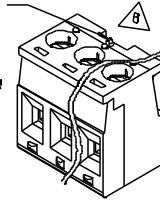
SD-39980-010

ALIGNMENT FEATURE PLACED
IN LINE WITH SCREWDRIVER
REMOVAL SLOT

SEE NOTES

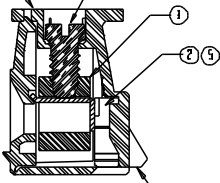
WINDOW ON PLUG
ALIGNS WITH SNIP
ON HEADER ALWAYS
CENTERED ON PART
OR ONE CIRCUIT TO
THE LEFT OF CENTER

NOTES:
SNAP FEATURES
2 CKT 2 SNAPS
3-24 CKT 3 SNAPS
LOCATED ON ENDS AND
ALIGNED WITH SCREWDRIVER
REMOVAL SLOT



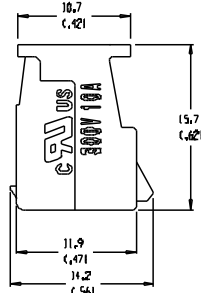
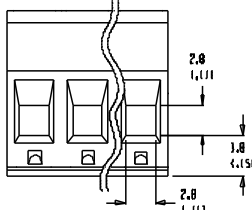
AUXILIARY VIEW
SCALE 2:1

① ① ⑥



SECTION Z-Z

ALIGNMENT
FEATURE



MATERIAL NO. (OPT. - G30)	MATERIAL NO. STANDARD	NUMBER OF CIRCUITS *XX*	DIM. "A"	DIM. "B"	DIM. "C"
399810302	399800302	02	10.42	1.430	5.08
399810303	399800303	03	16.00	1.630	10.16
399810304	399800304	04	21.08	1.830	15.24
399810305	399800305	05	26.16	1.930	20.34
399810306	399800306	06	31.24	1.930	25.40
399810307	399800307	07	36.32	1.930	30.48
399810308	399800308	08	41.40	1.930	35.56
399810309	399800309	09	46.48	1.930	40.64
399810310	399800310	10	51.56	1.930	45.72
399810311	399800311	11	56.64	1.930	50.80
399810312	399800312	12	61.72	1.930	55.88
399810313	399800313	13	66.80	1.930	60.96
399810314	399800314	14	71.88	1.930	66.04
399810315	399800315	15	76.96	1.930	71.12
399810316	399800316	16	82.04	1.930	76.20
399810317	399800317	17	87.12	1.930	81.28
399810318	399800318	18	92.20	1.930	86.36
399810319	399800319	19	97.28	1.930	91.44
399810320	399800320	20	102.36	1.930	96.52
399810321	399800321	21	107.44	1.930	101.60
399810322	399800322	22	112.52	1.930	106.68
399810323	399800323	23	117.60	1.930	111.76
399810324	399800324	24	122.68	1.930	116.84

- NOTES:
1. MATERIALS: SEE TABLE
 2. FINISHES: SEE TABLE
 3. PRODUCT SPECIFICATIONS NOT REQUIRED
 4. PACKAGING: NOT REQUIRED
 5. MATES WITH 98 SERIES HEADERS.

ITEM	QTY.	DESCRIPTION	MATERIAL	FINISH
6	XX	SCREW, M3 X 0.5, SLOTTED (1-830 OPTION)	PHOS. BRONZE	TIN
5	XX	TERMINAL (1-630 OPTION)	PHOS. BRONZE	GOLD
4	XX	SCREW, M3 X 0.5, SLOTTED	STEEL	ZN, CLEAR CHROMATE
3	XX	RISING CASE	BRASS	NICKEL
2	XX	TERMINAL	PHOS. BRONZE	TIN
1	1	INSULATOR	NYLON	BLACK

EE NO. 11499 (DATE: 01/11/01) (REV: 1)	QUALITY SYMBOLS MAJOR OPTIONAL MINOR	GENERAL TOLERANCES UNLESS SPECIFIED		SCALE 3:1	DESIGN UNIT: mm [X] INCH	DRAWN BY & DATE R. KEMP 3-27-02
		4 PLACES ±.030 ±.0015	3 PLACES ±.038 ±.005	2 PLACES ±.13 ±.01	1 PLACE ±.3	APPROVED BY & DATE P. WALZ 3-27-02
REV: B		DIMENSIONS ±.2°		CAD FILENAME: 9809XX		THIRD ANGLE PROJECTION
PRINT WHERE APPLICABLE MUST REMAIN WITHIN DIMENSIONS						

PROJECT NO.:	I	REV
DIMENSIONS:		
<input checked="" type="checkbox"/> mm	<input type="checkbox"/> INCH	<input type="checkbox"/> ONLY
TITLE: SR EUROSTYLE PLUG, ASSEMBLY 5.08 (.2001)		
MOLEX INCORPORATED		
MATERIAL NO. SEE CHART	DRAWING NO. SD-39980-010	SHEET NO. 1 OF 1
THIS DRAWING CONTAINS INFORMATION THAT IS PROPRIETARY TO MOLEX INCORPORATED AND SHOULD NOT BE USED WITHOUT WRITTEN PERMISSION.		