

Excellent Integrated System Limited

Stocking Distributor

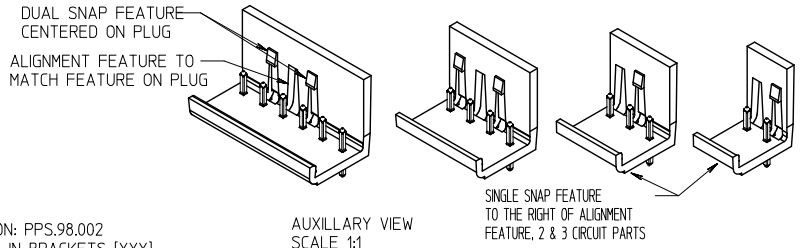
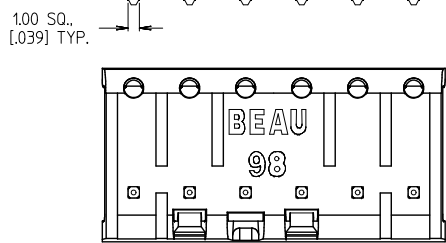
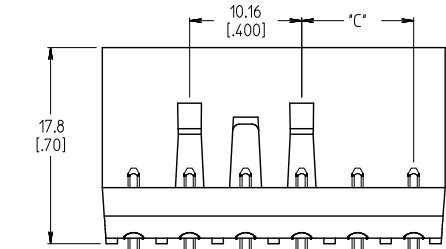
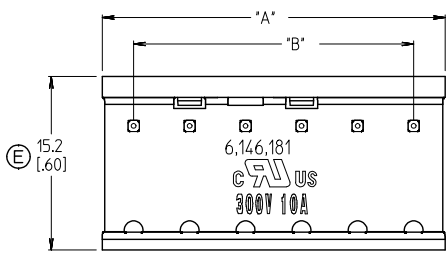
Click to view price, real time Inventory, Delivery & Lifecycle Information:

[Molex Connector Corporation](#)
[0399810405](#)

For any questions, you can email us directly:

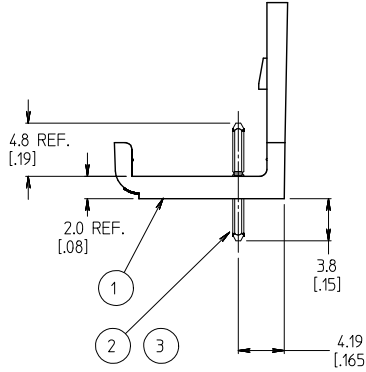
sales@integrated-circuit.com

10 9 8 7 6 5 4 3 2 39980



NOTES:

1. MATERIAL: SEE TABLE
2. FINISHES: SEE TABLE
3. PRODUCT SPECIFICATION: PPS.98.002
4. INCH DIMS ARE SHOWN IN BRACKETS [XXX].
5. *XX* REFERS TO QTY. OF CIRCUITS.
6. ASSEMBLY IS ROHS COMPLIANT.
7. REPLACES DWG. SD-39980-04.02.



NUMBER OF CIRCUITS "XX"	DIM. "A"	DIM. "B"	DIM. "C" .089	MATERIAL NO. TIN (STD)	MATERIAL NO. GOLD OPTION
02	10.77 [4.24]	5.08 [200]	N/A	39980-0402	39981-0402
03	15.85 [6.24]	10.16 [400]	5.08 [200]	39980-0403	39981-0403
04	20.93 [8.24]	15.24 [600]	5.08 [200]	39980-0404	39981-0404
05	26.01 [10.24]	20.32 [800]	5.08 [200]	39980-0405	39981-0405
06	31.09 [12.24]	25.40 [1000]	10.16 [400]	39980-0406	39981-0406
07	36.17 [14.24]	30.48 [1200]	10.16 [400]	39980-0407	39981-0407
08	41.25 [16.24]	35.56 [1400]	15.24 [600]	39980-0408	39981-0408
09	46.33 [18.24]	40.64 [1600]	15.24 [600]	39980-0409	39981-0409
10	51.41 [20.24]	45.72 [1800]	20.32 [800]	39980-0410	39981-0410
11	56.49 [22.24]	50.80 [2000]	20.32 [800]	39980-0411	39981-0411
12	61.57 [24.24]	55.88 [2200]	25.40 [1000]	39980-0412	39981-0412
13	66.65 [26.24]	60.96 [2400]	25.40 [1000]	39980-0413	39981-0413
14	71.73 [28.24]	66.04 [2600]	30.48 [1200]	39980-0414	39981-0414
15	76.81 [30.24]	71.12 [2800]	30.48 [1200]	39980-0415	39981-0415
16	81.89 [32.24]	76.20 [3000]	35.56 [1400]	39980-0416	39981-0416
17	86.97 [34.24]	81.28 [3200]	35.56 [1400]	39980-0417	39981-0417
18	92.05 [36.24]	86.36 [3400]	40.64 [1600]	39980-0418	39981-0418
19	97.13 [38.24]	91.44 [3600]	40.64 [1600]	39980-0419	39981-0419
20	102.21 [40.24]	96.52 [3800]	45.72 [1800]	39980-0420	39981-0420
21	107.29 [42.24]	101.60 [4000]	45.72 [1800]	39980-0421	39981-0421
22	112.37 [44.24]	106.68 [4200]	50.80 [2000]	39980-0422	39981-0422
23	117.45 [46.24]	111.76 [4400]	50.80 [2000]	39980-0423	39981-0423
24	122.53 [48.24]	116.84 [4600]	55.88 [2200]	39980-0424	39981-0424

ITEM	QTY.	DESCRIPTION	MATERIAL	FINISH
3	XX	HEADER PIN GOLD	BRASS	GOLD
2	XX	HEADER PIN	BRASS	TIN
1	1	INSULATOR	NYLON	BLACK

WIDTH WAS .62/IS .60 EC. NO.: WNA2009-0464 2009/07/08 CHYKORBERS 2009/07/08 APPR:ROBERS 2009/07/09	QUALITY SYMBOLS ▽=0 ▽=0 ▽=0	GENERAL TOLERANCES (UNLESS SPECIFIED)		DIMENSION STYLE MM/IN		SCALE 3:1		DESIGN UNITS INCH		THIRD ANGLE PROJECTION	
		4 PLACES ± --- ± --- 3 PLACES ± --- ± .005 2 PLACES ± 0.13 ± .01 1 PLACE ± 0.3 ± ---		DRAWN BY R. KEMP DATE 2001/12/05		CHECKED BY R. KEMP DATE 2003/10/07		APPROVED BY L. ROTHHAUS DATE 2003/10/17		TITLE 5.08/200 SINGLE ROW EUROSTYLE HEADER ASSEMBLY	
		ANGULAR ± 2°		DRAFT WHERE APPLICABLE MUST REMAIN WITHIN DIMENSIONS		MATERIAL NO. SEE CHART		DOCUMENT NO. SD-39980-006		SHEET NO. 1 OF 1	
		THIS DRAWING CONTAINS INFORMATION THAT IS PROPRIETARY TO MOLEX INCORPORATED AND SHOULD NOT BE USED WITHOUT WRITTEN PERMISSION									

9 8 7 6 5 4 3 2 1