

Excellent Integrated System Limited

Stocking Distributor

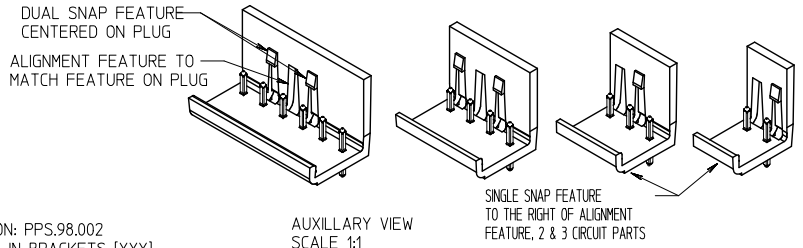
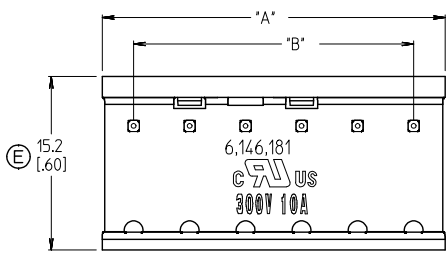
Click to view price, real time Inventory, Delivery & Lifecycle Information:

[Molex Connector Corporation](#)
[0399810406](#)

For any questions, you can email us directly:

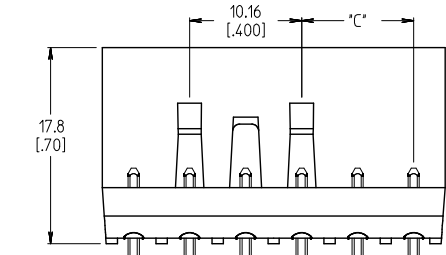
sales@integrated-circuit.com

10 9 8 7 6 5 4 3 2 39980

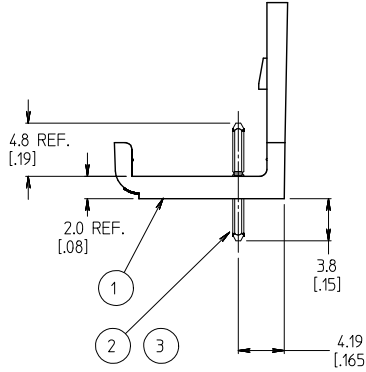


NOTES:

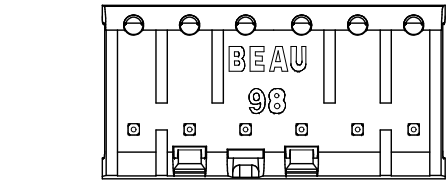
1. MATERIAL: SEE TABLE
2. FINISHES: SEE TABLE
3. PRODUCT SPECIFICATION: PPS.98.002
4. INCH DIMS ARE SHOWN IN BRACKETS [XXX].
5. *XX* REFERS TO QTY. OF CIRCUITS.
6. ASSEMBLY IS ROHS COMPLIANT.
7. REPLACES DWG. SD-39980-04.02.



100 SQ. [0.039] TYP.



NUMBER OF CIRCUITS "XX"	DIM. "A"	DIM. "B"	DIM. "C" .089	MATERIAL NO. TIN (STD)	MATERIAL NO. GOLD OPTION
02	10.77 [424]	5.08 [200]	N/A	39980-0402	39981-0402
03	15.85 [624]	10.16 [400]	5.08 [200]	39980-0403	39981-0403
04	20.93 [824]	15.24 [600]	5.08 [200]	39980-0404	39981-0404
05	26.01 [1024]	20.32 [800]	5.08 [200]	39980-0405	39981-0405
06	31.09 [1224]	25.40 [1000]	10.16 [400]	39980-0406	39981-0406
07	36.17 [1424]	30.48 [1200]	10.16 [400]	39980-0407	39981-0407
08	41.25 [1624]	35.56 [1400]	15.24 [600]	39980-0408	39981-0408
09	46.33 [1824]	40.64 [1600]	15.24 [600]	39980-0409	39981-0409
10	51.41 [2024]	45.72 [1800]	20.32 [800]	39980-0410	39981-0410
11	56.49 [2224]	50.80 [2000]	20.32 [800]	39980-0411	39981-0411
12	61.57 [2424]	55.88 [2200]	25.40 [1000]	39980-0412	39981-0412
13	66.65 [2624]	60.96 [2400]	25.40 [1000]	39980-0413	39981-0413
14	71.73 [2824]	66.04 [2600]	30.48 [1200]	39980-0414	39981-0414
15	76.81 [3024]	71.12 [2800]	30.48 [1200]	39980-0415	39981-0415
16	81.89 [3224]	76.20 [3000]	35.56 [1400]	39980-0416	39981-0416
17	86.97 [3424]	81.28 [3200]	35.56 [1400]	39980-0417	39981-0417
18	92.05 [3624]	86.36 [3400]	40.64 [1600]	39980-0418	39981-0418
19	97.13 [3824]	91.44 [3600]	40.64 [1600]	39980-0419	39981-0419
20	102.21 [4024]	96.52 [3800]	45.72 [1800]	39980-0420	39981-0420
21	107.29 [4224]	101.60 [4000]	45.72 [1800]	39980-0421	39981-0421
22	112.37 [4424]	106.68 [4200]	50.80 [2000]	39980-0422	39981-0422
23	117.45 [4624]	111.76 [4400]	50.80 [2000]	39980-0423	39981-0423
24	122.53 [4824]	116.84 [4600]	55.88 [2200]	39980-0424	39981-0424



ITEM	QTY.	DESCRIPTION	MATERIAL	FINISH
3	XX	HEADER PIN GOLD	BRASS	GOLD
2	XX	HEADER PIN	BRASS	TIN
1	1	INSULATOR	NYLON	BLACK

WIDTH WAS .62/IS .60 EC. NO.: WNA/2009-0464 DRAWN BY: CHYKORBERS CHECKED BY: APPENDEROSS 2009/07/08 2009/07/08 2009/07/09	QUALITY SYMBOLS ▽=0 ▽=0 ▽=0	GENERAL TOLERANCES (UNLESS SPECIFIED)		DIMENSION STYLE MM/IN		SCALE 3:1		DESIGN UNITS INCH		THIRD ANGLE PROJECTION			
		4 PLACES ± --- ± --- 3 PLACES ± --- ± .005 2 PLACES ± 0.13 ± .01 1 PLACE ± 0.3 ± ---		DRAWN BY: R. KEMP DATE: 2001/12/05		CHECKED BY: R. KEMP DATE: 2003/10/07		APPROVED BY: L. ROTHHAUS DATE: 2003/10/17		TITLE 5.08/200 SINGLE ROW EUROSTYLE HEADER ASSEMBLY		MATERIAL NO. SD-39980-006	
		ANGULAR ± 2°		DRAFT WHERE APPLICABLE MUST REMAIN WITHIN DIMENSIONS		SEE CHART		MOLEX MOLEX INCORPORATED		DOCUMENT NO. SD-39980-006		SHEET NO. 1 OF 1	
		THIS DRAWING CONTAINS INFORMATION THAT IS PROPRIETARY TO MOLEX INCORPORATED AND SHOULD NOT BE USED WITHOUT WRITTEN PERMISSION											

9 8 7 6 5 4 3 2 1