

Excellent Integrated System Limited

Stocking Distributor

Click to view price, real time Inventory, Delivery & Lifecycle Information:

[Molex Connector Corporation](#)

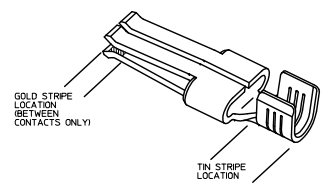
[0442624432](#)

For any questions, you can email us directly:

sales@integrated-circuit.com

PART NUMBER	PLATING	RECOMMENDED WIRE SIZE	DIM 'A' HEIGHT	DIM 'B' WIDTH	DIM 'C' GAP	DIM 'D' TIPS	RECOMMENDED CRIMP APPLICATOR	MATING CONTACT	PACKAGE SIZE
44262-4334	30μ" GOLD STRIPE OVER 50μ" NICKEL OVERALL WITH 80-130μ" SELECT TIN	8 AWG (2) 12 AWG	7.42±0.5 2.92±0.20	5.84±0.5 2.30±0.20			63832-6300	44262-6*** SEE MOLEX DRAWING SD-44262-026 OR WITH BLADES 0.64/0.025 THICK X 6.10/2.40 MM WIDE	1800 PARTS/ REEL
44262-4332	30μ" GOLD STRIPE OVER 50μ" NICKEL OVERALL WITH 80-130μ" SELECT TIN	10-12 AWG (2) 14 AWG	5.97±0.5 2.35±0.20	5.33±0.5 2.10±0.20	0.10/0.04	254/100 REF	63832-6000		2500 PARTS/ REEL
44262-4336	30μ" GOLD STRIPE OVER 50μ" NICKEL OVERALL WITH 80-130μ" SELECT TIN	14-16 AWG (2) 16 AWG (2) 18 AWG	5.20±0.5 2.05±0.20	5.33±0.5 2.10±0.20			63832-6100		
44262-4434	30μ" GOLD STRIPE OVER 50μ" NICKEL OVERALL WITH 80-130μ" SELECT TIN	8 AWG (2) 12 AWG	7.42±0.5 2.92±0.20	5.84±0.5 2.30±0.20			63832-6300	FOR USE WITH BLADES 1.27/0.50 THICK X 6.10/2.40 MM WIDE	1800 PARTS/ REEL
44262-4432	30μ" GOLD STRIPE OVER 50μ" NICKEL OVERALL WITH 80-130μ" SELECT TIN	10-12 AWG (2) 14 AWG	5.97±0.5 2.35±0.20	5.33±0.5 2.10±0.20	0.64/0.025	307/121 REF	63832-6000		2500 PARTS/ REEL
44262-4436	30μ" GOLD STRIPE OVER 50μ" NICKEL OVERALL WITH 80-130μ" SELECT TIN	14-16 AWG (2) 16 AWG (2) 18 AWG	5.20±0.5 2.05±0.20	5.33±0.5 2.10±0.20			63832-6100		
44262-4534	30μ" GOLD STRIPE OVER 50μ" NICKEL OVERALL WITH 80-130μ" SELECT TIN	8 AWG (2) 12 AWG	7.42±0.5 2.92±0.20	5.84±0.5 2.30±0.20			63832-6300	FOR USE WITH BLADES 0.81/0.32 THICK X 6.10/2.40 MM WIDE RECOMMENDED FOR 6 CIRCUITS AND ABOVE	1800 PARTS/ REEL
44262-4532	30μ" GOLD STRIPE OVER 50μ" NICKEL OVERALL WITH 80-130μ" SELECT TIN	10-12 AWG (2) 14 AWG	5.97±0.5 2.35±0.20	5.33±0.5 2.10±0.20	0.30/0.012	274/108 REF	63832-6000		2500 PARTS/ REEL
44262-4536	30μ" GOLD STRIPE OVER 50μ" NICKEL OVERALL WITH 80-130μ" SELECT TIN	14-16 AWG (2) 16 AWG (2) 18 AWG	5.20±0.5 2.05±0.20	5.33±0.5 2.10±0.20			63832-6100		
44262-4634	30μ" GOLD STRIPE OVER 50μ" NICKEL OVERALL WITH 80-130μ" SELECT TIN	8 AWG (2) 12 AWG	7.42±0.5 2.92±0.20	5.84±0.5 2.30±0.20			63832-6300	FOR USE WITH BLADES 1.27/0.50 THICK X 6.10/2.40 MM WIDE RECOMMENDED FOR 6 CIRCUITS AND ABOVE	1800 PARTS/ REEL
44262-4632	30μ" GOLD STRIPE OVER 50μ" NICKEL OVERALL WITH 80-130μ" SELECT TIN	10-12 AWG (2) 14 AWG	5.97±0.5 2.35±0.20	5.33±0.5 2.10±0.20	0.89/0.035	333/131 REF	63832-6000		2500 PARTS/ REEL
44262-4636	30μ" GOLD STRIPE OVER 50μ" NICKEL OVERALL WITH 80-130μ" SELECT TIN	14-16 AWG (2) 16 AWG (2) 18 AWG	5.20±0.5 2.05±0.20	5.33±0.5 2.10±0.20			63832-6100		

- NOTES:
1. MATERIAL: COPPER ALLOY .032 IN THICK
 2. FINISH: PER MOLEX PLATING SPECIFICATION ES-88 - SEE CHART
 3. FOR CRIMP APPLICATOR SEE CHART
 4. FOR CRIMP TOOLING CONTACT MOLEX OR VISIT THE MOLEX WEBSITE AT: WWW.MOLEX.COM
 5. STANDARD PACKAGE SIZE: SEE CHART
 6. SEE PRODUCT SPECIFICATION: PS-44262-001 FOR MORE INFORMATION
 7. PARTS ARE RoHS COMPLIANT
 8. FOR MATING CONTACT: SEE CHART
 9. FOR CRIMP SET UP INFORMATION SEE MOLEX APPLICATION SPECIFICATION DOCUMENT:
8 AWG - ATS-638326300
10/12 AWG - ATS-638326000
14/16 AWG - ATS-638326100



REMOVE THESE PARTS FROM CHART

REC'D: NG, UEP/2016-1882
DRAWN: JSCHMER 2015/07/22
CHECKED: JCHEN
APPROVED: JCHEN 2015/11/20
DESIGNER: JCHEN

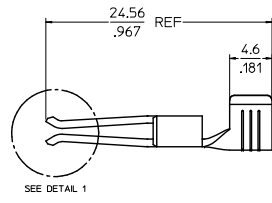
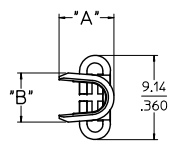
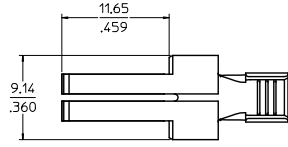
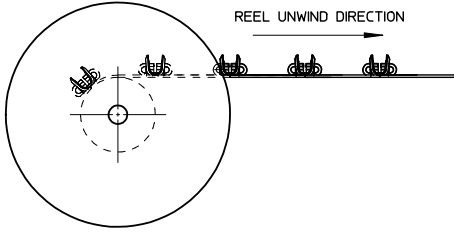
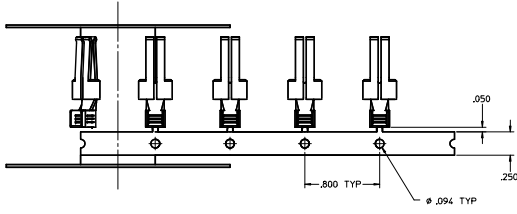
QUALITY SYMBOLS	GENERAL TOLERANCES (UNLESS SPECIFIED)		DIMENSION STYLE		SCALE	DESIGN UNITS	THIRD ANGLE PROJECTION
	mm	INCH	MM/IN	INCH			
▽=0	4 PLACES ±---	±---	DRAWN BY	DATE	1:1	INCH	TERMINAL - RECEPTACLE POWER CONTACT
▽=0	3 PLACES ±---	±---	DKOSTIC	2006/11/13			
▽=0	2 PLACES ±---	±0.010	CREATED BY	DATE			
▽=0	1 PLACE ±---	±0.25	APPROVED BY	DATE			
	ANGULAR ±1/2°		APATEL	2006/11/14			
	DRAFT WHERE APPLICABLE MUST REMAIN WITHIN DIMENSIONS		SEE CHART				
			MATERIAL NO.				
			DOCUMENT NO.				

MOLEX INCORPORATED

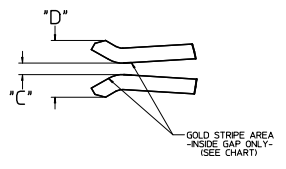
SD-44262-100

SHEET NO. 1 OF 2

THIS DRAWING CONTAINS INFORMATION THAT IS PROPRIETARY TO MOLEX INCORPORATED AND SHOULD NOT BE USED WITHOUT WRITTEN PERMISSION



SEE DETAIL 1



DETAIL 1
SCALE 10:1

SEE SHEET 1 EC NO. 0442624432 DRAWN: SCUMER 2005/07/22 CHKD: [blank] APPR: [blank] DATE: 2005/11/29 REV: [blank]	QUALITY SYMBOLS	GENERAL TOLERANCES (UNLESS SPECIFIED)	DRAGON STYLE	SCALE	DESIGN UNITS	THIRD ANGLE PROJECTION
	∇=0	4 PLACES ±.0005	MM/IN	5:1	INCH	
	∇=0	3 PLACES ±.001				
	∇=0	2 PLACES ±0.25				
		1 PLACE ±0.25				
		ANGULAR ±1/2°				
		DRAFT WHERE APPLICABLE MUST REMAIN WITHIN DIMENSIONS				
			MATERIAL NO.	DOCUMENT NO.		SHEET NO.
			SEE CHART	SD-44262-100		2 OF 2
			SIZE D			
			THIS DRAWING CONTAINS INFORMATION THAT IS PROPRIETARY TO MOLEX INCORPORATED AND SHOULD NOT BE USED WITHOUT WRITTEN PERMISSION			