

Excellent Integrated System Limited

Stocking Distributor

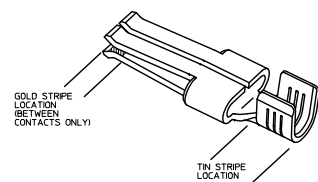
Click to view price, real time Inventory, Delivery & Lifecycle Information:

[Molex Connector Corporation](#)
[0442624532](#)

For any questions, you can email us directly:

sales@integrated-circuit.com

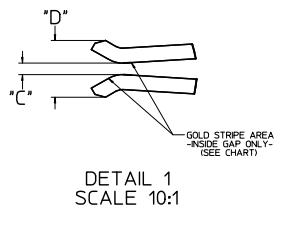
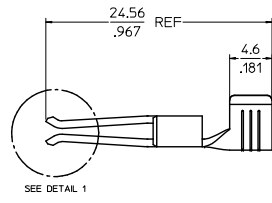
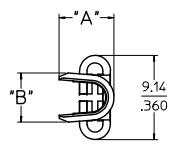
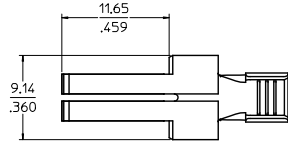
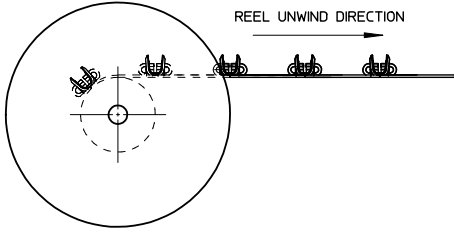
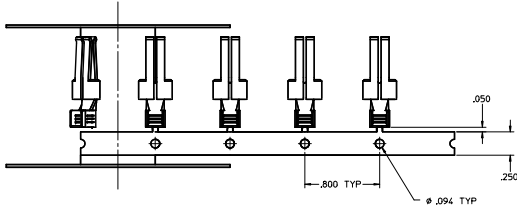
20	19	18	17	16	15	14	13	12	11	10	9	8	7	6	5	4	3	2	1
PART NUMBER	PLATING	RECOMMENDED WIRE SIZE	DIM 'A' HEIGHT	DIM 'B' WIDTH	DIM 'C' GAP	DIM 'D' TIPS	RECOMMENDED CRIMP APPLICATOR	MATING CONTACT	PACKAGE SIZE	NOTES: 1. MATERIAL: COPPER ALLOY .032 IN THICK 2. FINISH: PER MOLEX PLATING SPECIFICATION ES-88 - SEE CHART 3. FOR CRIMP APPLICATOR SEE CHART 4. FOR CRIMP TOOLING CONTACT MOLEX OR VISIT THE MOLEX WEBSITE AT: WWW.MOLEX.COM 5. STANDARD PACKAGE SIZE: SEE CHART 6. SEE PRODUCT SPECIFICATION: PS-44262-001 FOR MORE INFORMATION 7. PARTS ARE RoHS COMPLIANT 8. FOR MATING CONTACT: SEE CHART 9. FOR CRIMP SET UP INFORMATION SEE MOLEX APPLICATION SPECIFICATION DOCUMENT: 8 AWG - ATS-638326300 10/12 AWG - ATS-638326900 14/16 AWG - ATS-638326100									
44262-4334	30μ" GOLD STRIPE OVER 50μ" NICKEL OVERALL WITH 80-130μ" SELECT TIN	8 AWG (2) 12 AWG	7.42±0.5 292±0.20	5.84±0.5 230±0.20			63832-6300		1800 PARTS/ REEL	44262-6*** SEE MOLEX DRAWING SD-44262-026 OR WITH BLADES 0.64/0.025 THICK X 6.10/240 MN WIDE	FOR USE WITH BLADES 127/050 THICK X 6.10/240 MN WIDE	FOR USE WITH BLADES 0.81/032 THICK X 6.10/240 MN WIDE RECOMMENDED FOR 6 CIRCUITS AND ABOVE	1800 PARTS/ REEL	2500 PARTS/ REEL	2500 PARTS/ REEL	2500 PARTS/ REEL	2500 PARTS/ REEL	2500 PARTS/ REEL	2500 PARTS/ REEL
44262-4332	30μ" GOLD STRIPE OVER 50μ" NICKEL OVERALL WITH 80-130μ" SELECT TIN	10-12 AWG (2) 14 AWG	5.97±0.5 235±0.20	5.33±0.5 210±0.20	0.10/.004	254/100 REF	63832-6000		1800 PARTS/ REEL										
44262-4336	30μ" GOLD STRIPE OVER 50μ" NICKEL OVERALL WITH 80-130μ" SELECT TIN	14-16 AWG (2) 16 AWG (2) 18 AWG	5.20±0.5 205±0.20	5.33±0.5 210±0.20			63832-6100		1800 PARTS/ REEL										
44262-4434	30μ" GOLD STRIPE OVER 50μ" NICKEL OVERALL WITH 80-130μ" SELECT TIN	8 AWG (2) 12 AWG	7.42±0.5 292±0.20	5.84±0.5 230±0.20			63832-6300		1800 PARTS/ REEL	0.64/.025	3.07/.121 REF	FOR USE WITH BLADES 127/050 THICK X 6.10/240 MN WIDE	1800 PARTS/ REEL	2500 PARTS/ REEL	2500 PARTS/ REEL	2500 PARTS/ REEL	2500 PARTS/ REEL	2500 PARTS/ REEL	
44262-4432	30μ" GOLD STRIPE OVER 50μ" NICKEL OVERALL WITH 80-130μ" SELECT TIN	10-12 AWG (2) 14 AWG	5.97±0.5 235±0.20	5.33±0.5 210±0.20			63832-6000		1800 PARTS/ REEL										
44262-4436	30μ" GOLD STRIPE OVER 50μ" NICKEL OVERALL WITH 80-130μ" SELECT TIN	14-16 AWG (2) 16 AWG (2) 18 AWG	5.20±0.5 205±0.20	5.33±0.5 210±0.20			63832-6100		1800 PARTS/ REEL										
44262-4534	30μ" GOLD STRIPE OVER 50μ" NICKEL OVERALL WITH 80-130μ" SELECT TIN	8 AWG (2) 12 AWG	7.42±0.5 292±0.20	5.84±0.5 230±0.20			63832-6300		1800 PARTS/ REEL	0.30/.012	2.74/.108 REF	FOR USE WITH BLADES 0.81/032 THICK X 6.10/240 MN WIDE RECOMMENDED FOR 6 CIRCUITS AND ABOVE	1800 PARTS/ REEL	2500 PARTS/ REEL	2500 PARTS/ REEL	2500 PARTS/ REEL	2500 PARTS/ REEL	2500 PARTS/ REEL	
44262-4532	30μ" GOLD STRIPE OVER 50μ" NICKEL OVERALL WITH 80-130μ" SELECT TIN	10-12 AWG (2) 14 AWG	5.97±0.5 235±0.20	5.33±0.5 210±0.20			63832-6000		1800 PARTS/ REEL										
44262-4536	30μ" GOLD STRIPE OVER 50μ" NICKEL OVERALL WITH 80-130μ" SELECT TIN	14-16 AWG (2) 16 AWG (2) 18 AWG	5.20±0.5 205±0.20	5.33±0.5 210±0.20			63832-6100		1800 PARTS/ REEL										
44262-4634	30μ" GOLD STRIPE OVER 50μ" NICKEL OVERALL WITH 80-130μ" SELECT TIN	8 AWG (2) 12 AWG	7.42±0.5 292±0.20	5.84±0.5 230±0.20			63832-6300		1800 PARTS/ REEL	0.89/.035	3.33/.131 REF	FOR USE WITH BLADES 127/050 THICK X 6.10/240 MN WIDE RECOMMENDED FOR 6 CIRCUITS AND ABOVE	1800 PARTS/ REEL	2500 PARTS/ REEL	2500 PARTS/ REEL	2500 PARTS/ REEL	2500 PARTS/ REEL	2500 PARTS/ REEL	
44262-4632	30μ" GOLD STRIPE OVER 50μ" NICKEL OVERALL WITH 80-130μ" SELECT TIN	10-12 AWG (2) 14 AWG	5.97±0.5 235±0.20	5.33±0.5 210±0.20			63832-6000		1800 PARTS/ REEL										
44262-4636	30μ" GOLD STRIPE OVER 50μ" NICKEL OVERALL WITH 80-130μ" SELECT TIN	14-16 AWG (2) 16 AWG (2) 18 AWG	5.20±0.5 205±0.20	5.33±0.5 210±0.20			63832-6100		1800 PARTS/ REEL										



REMOVE THESE PARTS FROM CHART

REC. NO. UEP2016-1882
DRAWN BY SCHAFER 2/15/07/2
CHECKED BY [blank]
APPROVED BY [blank] 2/15/11/26
DESIGNER [blank]

QUALITY SYMBOLS	GENERAL TOLERANCES (UNLESS SPECIFIED)		DIMENSION STYLE		SCALE	DESIGN UNITS	THIRD ANGLE PROJECTION
	mm	INCH	MM/IN	MM/IN			
▽=0	4 PLACES ±---	±---	DRAWN BY BKOSTIC	DATE 2006/11/13	1:1	INCH	TERMINAL - RECEPTACLE POWER CONTACT
▽=0	3 PLACES ±---	±.010	CHECKED BY BKOSTIC	DATE 2006/11/13			
▽=0	2 PLACES ±0.25	±.010	APPROVED BY APATEL	DATE 2006/11/14			
▽=0	1 PLACE ±0.25	±---	MATERIAL NO. SEE CHART				
	ANGULAR ±1/2°		DOCUMENT NO. SD-44262-100				
	DRAFT WHERE APPLICABLE MUST REMAIN WITHIN DIMENSIONS		SHEET NO. 1 OF 2				
			SIZE D THIS DRAWING CONTAINS INFORMATION THAT IS PROPRIETARY TO MOLEX INCORPORATED AND SHOULD NOT BE USED WITHOUT WRITTEN PERMISSION				



SEE SHEET 1 EC NO. 0442624532 DRAWN: SCUMER 2005/07/22 CHKD: [blank] APPR: [blank] DATE: 2005/11/29 REV: [blank]	QUALITY SYMBOLS	GENERAL TOLERANCES (UNLESS SPECIFIED)	DRAGON STYLE	SCALE	DESIGN UNITS	THIRD ANGLE PROJECTION	
	∇=0	4 PLACES ± --- ± ---	MM/IN	5:1	INCH	⊙	
	∇=0	3 PLACES ± --- ± ---					
	∇=0	2 PLACES ± 0.25 ± 0.10					
		1 PLACE ± 0.25 ± ---					
		ANGULAR ± 1/2°					
		DRAFT WHERE APPLICABLE MUST REMAIN WITHIN DIMENSIONS					
			MATERIAL NO.	DOCUMENT NO.		SHEET NO.	
			SEE CHART	SD-44262-100		2 OF 2	
			SIZE D				
			THIS DRAWING CONTAINS INFORMATION THAT IS PROPRIETARY TO MOLEX INCORPORATED AND SHOULD NOT BE USED WITHOUT WRITTEN PERMISSION				