

## Excellent Integrated System Limited

Stocking Distributor

Click to view price, real time Inventory, Delivery & Lifecycle Information:

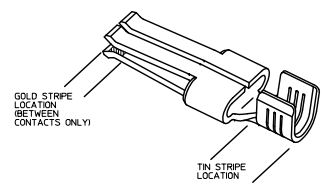
[Molex Connector Corporation](#)  
[0442624606](#)

For any questions, you can email us directly:

[sales@integrated-circuit.com](mailto:sales@integrated-circuit.com)

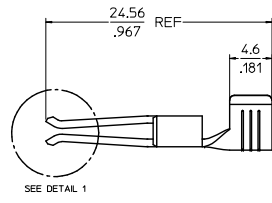
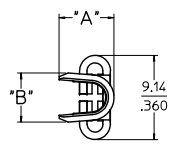
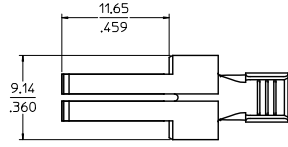
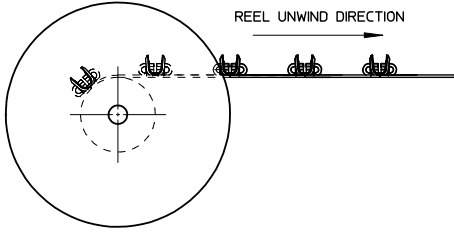
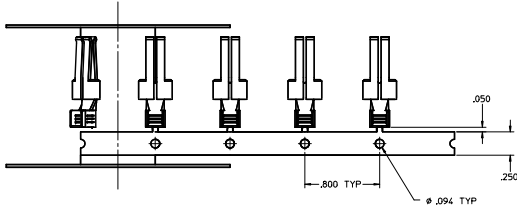
PART NUMBER	PLATING	RECOMMENDED WIRE SIZE	DIM 'A' HEIGHT	DIM 'B' WIDTH	DIM 'C' GAP	DIM 'D' TIPS	RECOMMENDED CRIMP APPLICATOR	MATING CONTACT	PACKAGE SIZE
44262-4334	30μ" GOLD STRIPE OVER 50μ" NICKEL OVERALL WITH 80-130μ" SELECT TIN	8 AWG (2) 12 AWG	7.42±0.5 2.92±0.20	5.84±0.5 2.30±0.20			63832-6300	44262-6*** SEE MOLEX DRAWING SD-44262-026 OR WITH BLADES 0.64/0.025 THICK X 6.10/2.40 MM WIDE	1800 PARTS/ REEL
44262-4332	30μ" GOLD STRIPE OVER 50μ" NICKEL OVERALL WITH 80-130μ" SELECT TIN	10-12 AWG (2) 14 AWG	5.97±0.5 2.35±0.20	5.33±0.5 2.10±0.20	0.10/0.04	254/100 REF	63832-6000		2500 PARTS/ REEL
44262-4336	30μ" GOLD STRIPE OVER 50μ" NICKEL OVERALL WITH 80-130μ" SELECT TIN	14-16 AWG (2) 16 AWG (2) 18 AWG	5.20±0.5 2.05±0.20	5.33±0.5 2.10±0.20			63832-6100		
44262-4434	30μ" GOLD STRIPE OVER 50μ" NICKEL OVERALL WITH 80-130μ" SELECT TIN	8 AWG (2) 12 AWG	7.42±0.5 2.92±0.20	5.84±0.5 2.30±0.20			63832-6300	FOR USE WITH BLADES 1.27/0.50 THICK X 6.10/2.40 MM WIDE	1800 PARTS/ REEL
44262-4432	30μ" GOLD STRIPE OVER 50μ" NICKEL OVERALL WITH 80-130μ" SELECT TIN	10-12 AWG (2) 14 AWG	5.97±0.5 2.35±0.20	5.33±0.5 2.10±0.20	0.64/0.025	3077/121 REF	63832-6000		2500 PARTS/ REEL
44262-4436	30μ" GOLD STRIPE OVER 50μ" NICKEL OVERALL WITH 80-130μ" SELECT TIN	14-16 AWG (2) 16 AWG (2) 18 AWG	5.20±0.5 2.05±0.20	5.33±0.5 2.10±0.20			63832-6100		
44262-4534	30μ" GOLD STRIPE OVER 50μ" NICKEL OVERALL WITH 80-130μ" SELECT TIN	8 AWG (2) 12 AWG	7.42±0.5 2.92±0.20	5.84±0.5 2.30±0.20			63832-6300	FOR USE WITH BLADES 0.81/0.32 THICK X 6.10/2.40 MM WIDE RECOMMENDED FOR 6 CIRCUITS AND ABOVE	1800 PARTS/ REEL
44262-4532	30μ" GOLD STRIPE OVER 50μ" NICKEL OVERALL WITH 80-130μ" SELECT TIN	10-12 AWG (2) 14 AWG	5.97±0.5 2.35±0.20	5.33±0.5 2.10±0.20	0.30/0.012	274/108 REF	63832-6000		2500 PARTS/ REEL
44262-4536	30μ" GOLD STRIPE OVER 50μ" NICKEL OVERALL WITH 80-130μ" SELECT TIN	14-16 AWG (2) 16 AWG (2) 18 AWG	5.20±0.5 2.05±0.20	5.33±0.5 2.10±0.20			63832-6100		
44262-4634	30μ" GOLD STRIPE OVER 50μ" NICKEL OVERALL WITH 80-130μ" SELECT TIN	8 AWG (2) 12 AWG	7.42±0.5 2.92±0.20	5.84±0.5 2.30±0.20			63832-6300	FOR USE WITH BLADES 1.27/0.50 THICK X 6.10/2.40 MM WIDE RECOMMENDED FOR 6 CIRCUITS AND ABOVE	1800 PARTS/ REEL
44262-4632	30μ" GOLD STRIPE OVER 50μ" NICKEL OVERALL WITH 80-130μ" SELECT TIN	10-12 AWG (2) 14 AWG	5.97±0.5 2.35±0.20	5.33±0.5 2.10±0.20	0.89/0.035	333/131 REF	63832-6000		2500 PARTS/ REEL
44262-4636	30μ" GOLD STRIPE OVER 50μ" NICKEL OVERALL WITH 80-130μ" SELECT TIN	14-16 AWG (2) 16 AWG (2) 18 AWG	5.20±0.5 2.05±0.20	5.33±0.5 2.10±0.20			63832-6100		

- NOTES:
1. MATERIAL: COPPER ALLOY .032 IN THICK
  2. FINISH: PER MOLEX PLATING SPECIFICATION ES-88 - SEE CHART
  3. FOR CRIMP APPLICATOR SEE CHART
  4. FOR CRIMP TOOLING CONTACT MOLEX OR VISIT THE MOLEX WEBSITE AT: WWW.MOLEX.COM
  5. STANDARD PACKAGE SIZE: SEE CHART
  6. SEE PRODUCT SPECIFICATION: PS-44262-001 FOR MORE INFORMATION
  7. PARTS ARE RoHS COMPLIANT
  8. FOR MATING CONTACT: SEE CHART
  9. FOR CRIMP SET UP INFORMATION SEE MOLEX APPLICATION SPECIFICATION DOCUMENT:
    - 8 AWG - ATS-638326300
    - 10/12 AWG - ATS-638326000
    - 14/16 AWG - ATS-638326100

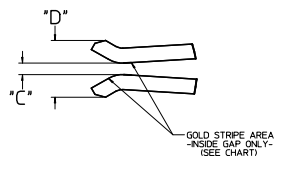


REMOVE THESE PARTS FROM CHART  
 REC. NO. UEP2016-1882  
 DRAWN BY SCHAFER 2/15/07/2  
 CHECKED JACOBSON 2/15/11/20  
 APPROVED BY [Signature] 2/15/11/20  
 DATE

QUALITY SYMBOLS	4 PLACES ±---	GENERAL TOLERANCES (UNLESS SPECIFIED)	mm	INCH	DRAWN BY	DATE	TITLE
	3 PLACES ±---				SKOSTIC	2006/11/13	TERMINAL - RECEPTACLE POWER CONTACT
	2 PLACES ±0.25				SKOSTIC	2006/11/13	
	1 PLACE ±0.25				APATEL	2006/11/14	
	ANGULAR ±1/2°						
	DRAFT WHERE APPLICABLE MUST REMAIN WITHIN DIMENSIONS						
					MATERIAL NO.	DATE	THIRD ANGLE PROJECTION
					SEE CHART		
							MOLEX INCORPORATED
							SD-44262-100
							SHEET NO. 1 OF 2
							THIS DRAWING CONTAINS INFORMATION THAT IS PROPRIETARY TO MOLEX INCORPORATED AND SHOULD NOT BE USED WITHOUT WRITTEN PERMISSION



SEE DETAIL 1



DETAIL 1  
SCALE 10:1

SEE SHEET 1 DEC. NO. 0442624606-8882 DRAWN: SCUMER 2005/07/22 CHKD: [blank] APPR: [blank] DATE: 2005/11/29 REV: [blank]	QUALITY SYMBOLS	GENERAL TOLERANCES (UNLESS SPECIFIED)	DRAGON STYLE	SCALE	DESIGN UNITS	THIRD ANGLE PROJECTION	
	∇=0	4 PLACES ±.0005	MM/IN	5:1	INCH		
	∇=0	3 PLACES ±.001					
	∇=0	2 PLACES ±0.25					
		1 PLACE ±0.25					
		ANGULAR ±1/2°					
		DRAFT WHERE APPLICABLE MUST REMAIN WITHIN DIMENSIONS					
			MATERIAL NO.	DOCUMENT NO.		SHEET NO.	
			SEE CHART	SD-44262-100		2 OF 2	
			SIZE D				
			THIS DRAWING CONTAINS INFORMATION THAT IS PROPRIETARY TO MOLEX INCORPORATED AND SHOULD NOT BE USED WITHOUT WRITTEN PERMISSION				