

Excellent Integrated System Limited

Stocking Distributor

Click to view price, real time Inventory, Delivery & Lifecycle Information:

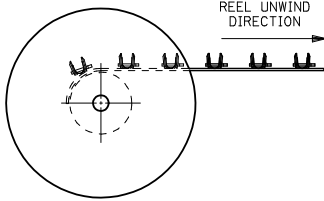
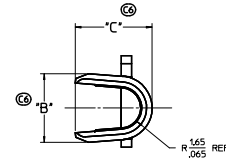
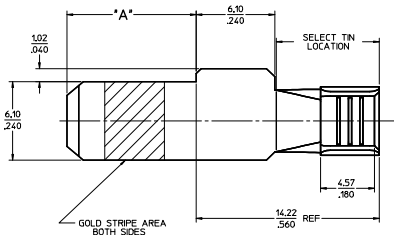
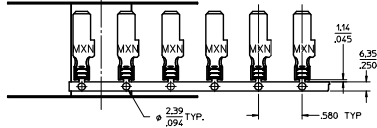
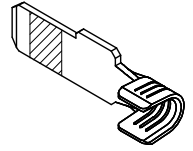
[Molex Connector Corporation](#)
[0442626311](#)

For any questions, you can email us directly:

sales@integrated-circuit.com

PART NUMBER	PLATING	RECOMMENDED WIRE SIZE	DIM "A" BLADE LENGTH	DIM "B" WIDTH	DIM "C" HEIGHT	RECOMMENDED CRIMP APPLICATOR	PRODUCT STATUS
44262-6520	30μ INCHES SELECT GOLD STRIPE OVER 50μ INCHES NICKEL OVERALL WITH 80-160μ INCHES SELECT TIN	8 AWG (2) 12 AWG	10.03/.395	N/A	N/A	63832-6300	NOT TOOLED
44262-6521			11.56/.455				
44262-6522			13.08/.515				
44262-6310	80-160μ INCHES TIN OVERALL OVER 50μ INCHES NICKEL OVERALL	10-12 AWG	10.03/.395	5.33+-.025 .210+-.010	5.97+-.050 .235+-.020	63832-6000	TOOLED
44262-6311			11.56/.455				
44262-6312			13.08/.515				
44262-6320	30μ INCHES SELECT GOLD STRIPE OVER 50μ INCHES NICKEL OVERALL WITH 80-160μ INCHES SELECT TIN	(2) 14 AWG	10.03/.395			63832-6000	
44262-6321			11.56/.455				
44262-6322			13.08/.515				
44262-6420	30μ INCHES SELECT GOLD STRIPE OVER 50μ INCHES NICKEL OVERALL WITH 80-160μ INCHES SELECT TIN	14-16 AWG	10.03/.395		5.21+-.050 .205+-.020	63832-6100	
44262-6421			11.56/.455				
44262-6422			13.08/.515				

- NOTES:
1. MATERIAL: COPPER ALLOY .032 IN THICK
 2. FINISH PER MOLEX PLATING SPECIFICATION ES-88 - SEE CHART
 3. SEE CHART FOR CRIMP APPLICATOR NUMBER
 4. FOR CRIMP TOOLING CONTACT MOLEX OR VISIT THE MOLEX WEBSITE AT WWW.MOLEX.COM
 5. STD PACKAGE SIZE: 2,500 PARTS/REEL
 6. SEE PRODUCT SPECIFICATION PS-44262-001 FOR MORE INFORMATION.
 7. PARTS ARE RoHS COMPLIANT
 8. THIS PART MATES WITH RECEPTACLE (FEMALE) POWER CONTACT 44262-43** (SEE SD-44262-100)
 9. FOR CRIMP SET UP INFORMATION SEE MOLEX APPLICATION DOCUMENT:
8 AWG - ATS-638326300
10/12 AWG - ATS-638326000
14/16 AWG - ATS-638326100



ADD 3 TIN PINS EC NO. 2005/07/26 CHECKED: ANDRUS/SCHUMER APPR. C8 NEW	QUALITY SYMBOLS	GENERAL TOLERANCES (UNLESS SPECIFIED)	DIMENSION STYLE	SCALE	DESIGN UNITS	THIRD ANGLE PROJECTION
	✓-0	4 PLACES ±.010	MM/INCH	5:1	INCH	⊙
	✓-0	3 PLACES ±.010				
	✓-0	1 PLACE ±.025				
		ANGULAR ±1/2°				
		DRAFT WHERE APPLICABLE MUST REMAIN WITHIN DIMENSIONS				
		SEE CHART				
		THIS DRAWING CONTAINS INFORMATION THAT IS PROPRIETARY TO MOLEX INCORPORATED AND SHOULD NOT BE USED WITHOUT WRITTEN PERMISSION				

TERMINAL - BLADE POWER TERMINAL
MOLEX INCORPORATED
SD-44262-026
1 OF 1