

Excellent Integrated System Limited

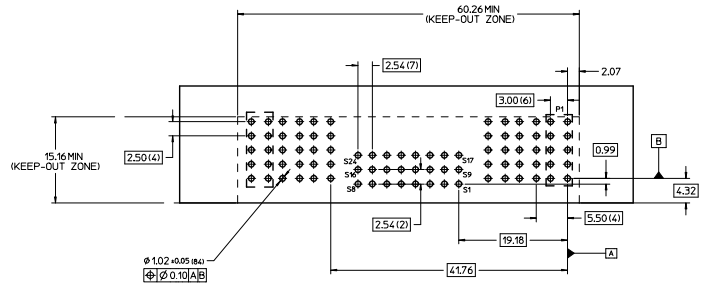
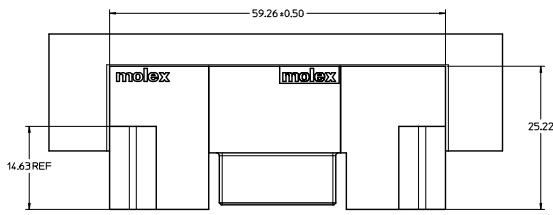
Stocking Distributor

Click to view price, real time Inventory, Delivery & Lifecycle Information:

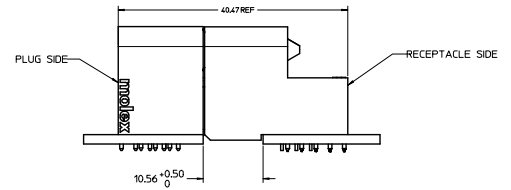
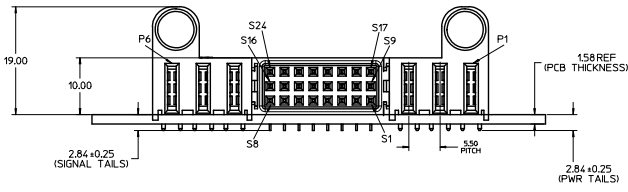
[Molex Connector Corporation](#)
[0464363008](#)

For any questions, you can email us directly:

sales@integrated-circuit.com

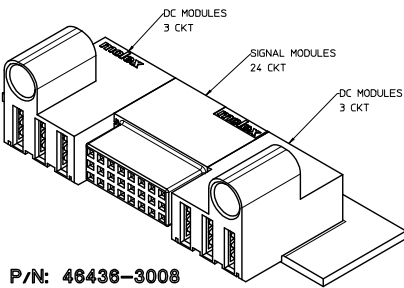


RECOMMENDED PC BOARD LAYOUT & KEEP-OUT ZONE



NOTES:

1. MATERIAL:
-HOUSINGS: LCP UL94, V-0, COLOR: BLACK.
-TERMINALS: COPPER ALLOY.
-PLATING: 0.00127 NICKEL OVERALL WITH 0.00254 SELECTIVE TIN ON SOLDER TAILS AND 0.000762 SELECTIVE GOLD ON CONTACT AREA.
2. ASSEMBLIES PACKED IN TRAYS, SPO, TBD
3. PC BOARD REQUIRES SOLDER THRU HOLES, REFER TO PS-46436-100 FOR DETAILS
4. PRODUCT SPEC: PS-46436-100.
5. APPLICATION SPEC: AS-46436-100.
6. PRODUCT TO MEET ROHS REQUIREMENTS.
7. ASSEMBLY MATES TO MOLEX PLUG ASSEMBLY P/N 46437-3008.



P/N: 46436-3008

RELEASED EC NO. 1472/2009-2546 2009/05/05 DRAWN: JKH 2009/05/05 CHECKED: JKH 2009/05/05 APPROVED: JKH 2009/05/05 PREP:	QUALITY SYMBOLS	GENERAL TOLERANCES (UNLESS SPECIFIED)	DIMENSION STYLE	SCALE	DESIGN UNITS	THIRD ANGLE PROJECTION	
		mm INCH	MM ONLY	NTS	METRIC		
	4 PLACES ± 0.25	± 0.25	DATE	DATE			
	3 PLACES ± 0.25	± 0.25	DATE	DATE			
	2 PLACES ± 0.25	± 0.25	DATE	DATE			
	1 PLACE ± 0.25	± 0.25	DATE	DATE			
	ANGULAR ± 1/2°		SHONG				
	DRAFT WHERE APPLICABLE MUST REMAIN WITHIN DIMENSIONS		MATERIAL NO.	DOCUMENT NO.		SHEET NO.	
			46436-3008	SD-46436-308		1 OF 1	
			THIS DRAWING CONTAINS INFORMATION THAT IS PROPRIETARY TO MOLEX INCORPORATED AND SHOULD NOT BE USED WITHOUT WRITTEN PERMISSION				