

Excellent Integrated System Limited

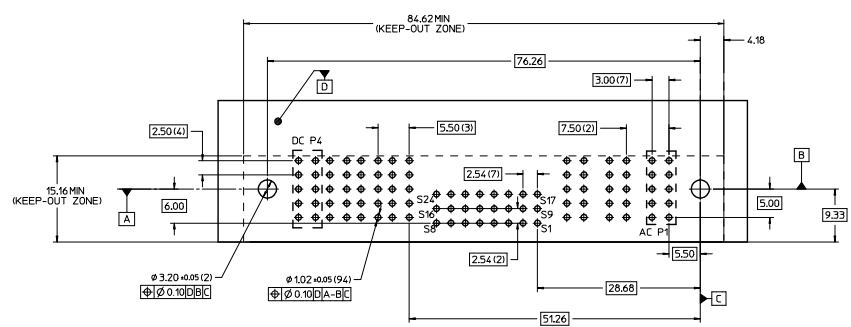
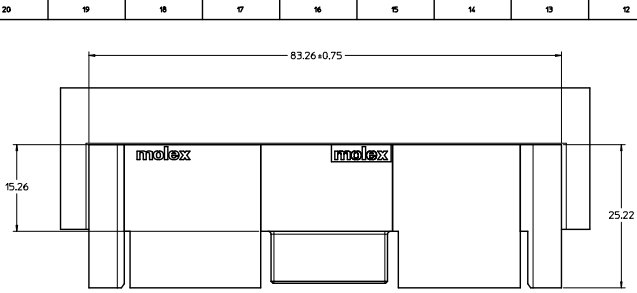
Stocking Distributor

Click to view price, real time Inventory, Delivery & Lifecycle Information:

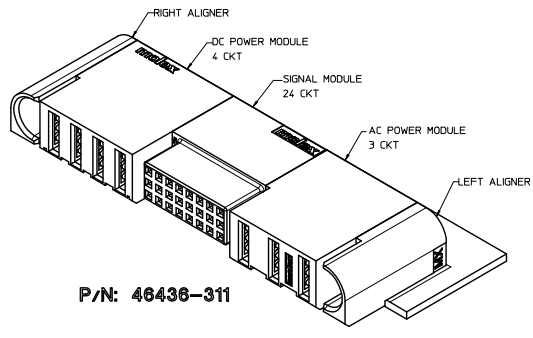
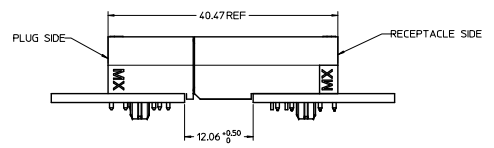
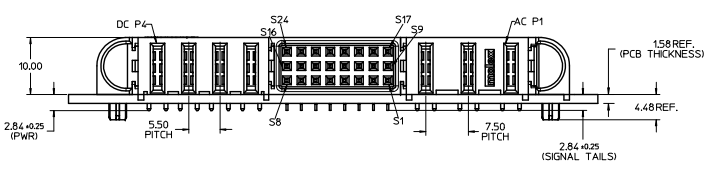
[Molex Connector Corporation](#)
[0464363011](#)

For any questions, you can email us directly:

sales@integrated-circuit.com



RECOMMENDED PC BOARD LAYOUT & KEEP-OUT ZONE



NOTES:

1. MATERIAL:
-HOUSINGS: LCP UL94, V-0, COLOR: BLACK.
-TERMINALS: COPPER ALLOY.
-PLATING: 0.00127 NICKEL OVERALL WITH 0.00254 SELECTIVE TIN ON SOLDER TAILS AND 0.000762 SELECTIVE GOLD ON CONTACT AREA.
2. ASSEMBLES PACKED IN TRAYS, SPO: TBD
3. PC BOARD REQUIRES SOLDER THRU HOLES, REFER TO PS-46436-100 FOR DETAILS
4. PRODUCT SPEC: PS-46436-100.
5. APPLICATION SPEC: AS-46436-100.
6. PRODUCT TO MEET RoHS REQUIREMENTS.
7. ASSEMBLY MATES TO MOLEX PLUG ASSEMBLY P/N 46437-3011.

RELEASED ECT: MCL/PT/2009-2516 2009/05/05 DRAWN: JUILLES 2009/05/05 CHECKED: KJOH 2009/05/05 APPROVED: HATEL 2009/05/05	QUALITY SYMBOLS DESCRIPTION	GENERAL TOLERANCES (UNLESS SPECIFIED)		DIMENSION STYLE MM ONLY		SCALE NTS	DESIGN UNITS METRIC	THIRD ANGLE PROJECTION		
		4 PLACES ± 0.25 3 PLACES ± 0.13 2 PLACES ± 0.25 1 PLACE ± 0.25	mm INCH ± 0.25 ± 0.010 ± 0.13 ± 0.005 ± 0.25 ± 0.010 ± 0.25 ± 0.010	DRAWN BY KJOH	DATE 11/3/2009	CHECKED BY KJOH	DATE 11/3/2009	RA RECEIPT ASSY TEN60 POWER GUIDES G-3AC-24S-4P-G		
		ANGULAR ± 1/2°	SHONG	APPROVED BY SHONG	DATE	MOLEX INCORPORATED				
		DRAFT WHERE APPLICABLE MUST REMAIN WITHIN DIMENSIONS	MATERIAL NO. 46436-3011	DOCUMENT NO. SD-46436-311	SHEET NO. 1 OF 1					