

Excellent Integrated System Limited

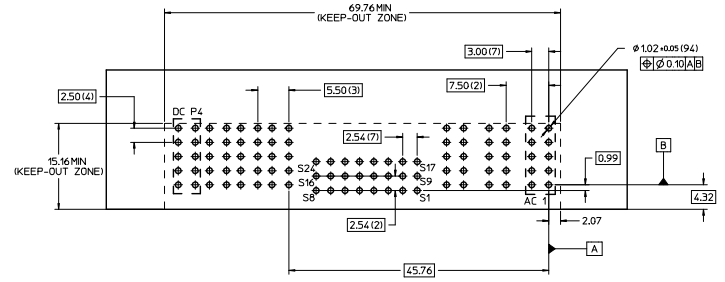
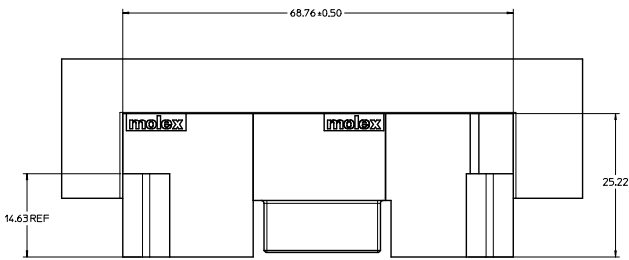
Stocking Distributor

Click to view price, real time Inventory, Delivery & Lifecycle Information:

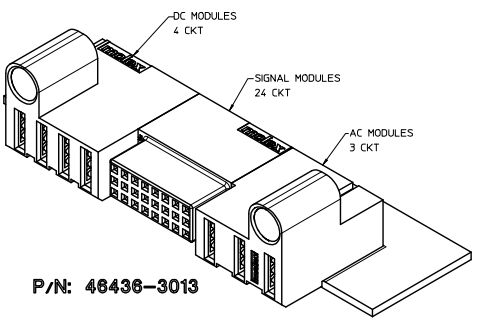
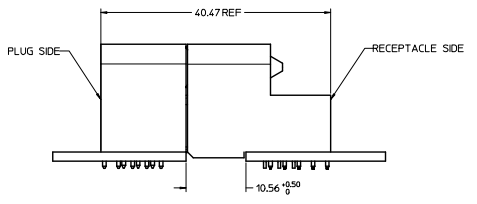
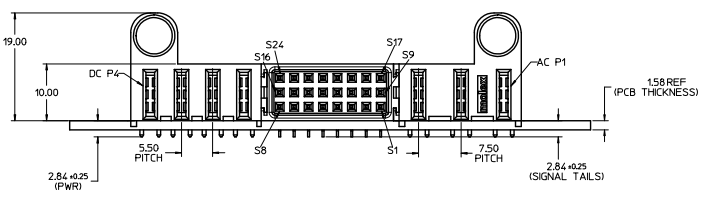
[Molex Connector Corporation](#)
[0464363013](#)

For any questions, you can email us directly:
sales@integrated-circuit.com

20 19 18 17 16 15 14 13 12 11 10 9 8 7 6 5 4 3 2 1



RECOMMENDED PC BOARD LAYOUT & KEEP-OUT ZONE



P/N: 46436-3013

NOTES:

- MATERIAL:
 - HOUSINGS: LCP UL94, V-0, COLOR: BLACK.
 - TERMINALS: COPPER ALLOY
 - PLATING: 0.0027 NICKEL OVERALL WITH 0.00254 SELECTIVE TIN ON SOLDER TAILS AND 0.000762 SELECTIVE GOLD ON CONTACT AREA.
- ASSEMBLIES PACKED IN TRAYS, SPO, TBD
- PC BOARD REQUIRES SOLDER THRU HOLES, REFER TO PS-46436-100 FOR DETAILS
- PRODUCT SPEC: PS-46436-100.
- APPLICATION SPEC: AS-46436-100.
- PRODUCT TO MEET RoHS REQUIREMENTS.
- ASSEMBLY MATES TO MOLEX PLUG ASSEMBLY P/N 46437-3013.

QUALITY SYMBOLS	GENERAL TOLERANCES (UNLESS SPECIFIED)		DIMENSION STYLE		SCALE	DESIGN UNITS	THIRD ANGLE PROJECTION
	mm	INCH	MM ONLY	DATE	NTS	METRIC	
4 PLACES ± 0.25	± 0.25	± 0.010	MM ONLY	2009/03/11	NTS	METRIC	RA RECEIPT ASSY TEN60 POWER, TOP GUIDES TG-3AC-24S-4P-TG MOLEX INCORPORATED
3 PLACES ± 0.25	± 0.25	± 0.010	CHECKED BY	DATE			
2 PLACES ± 0.25	± 0.25	± 0.010	APPROVED BY	DATE			MATERIAL NO: 46436-3013 DOCUMENT NO: SD-46436-313 SHEET NO: 1 OF 1
1 PLACE ± 0.25	± 0.25	± 0.010	SHONG				
	ANGULAR ± 1/2°		DRAFT WHERE APPLICABLE MUST REMAIN WITHIN DIMENSIONS		THIS DRAWING CONTAINS INFORMATION THAT IS PROPRIETARY TO MOLEX INCORPORATED AND SHOULD NOT BE USED WITHOUT WRITTEN PERMISSION		

19 18 17 16 15 14 13 12 11 10 9 8 7 6 5 4 3 2 1