

Excellent Integrated System Limited

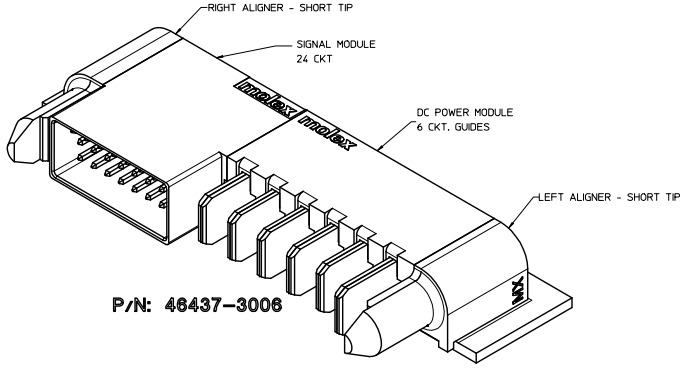
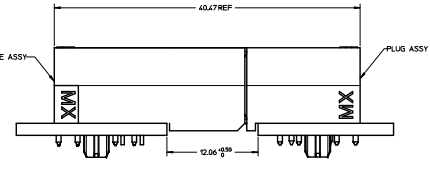
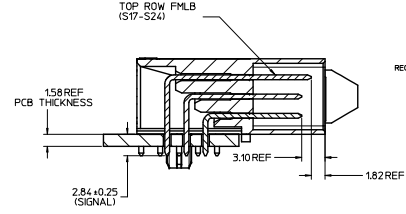
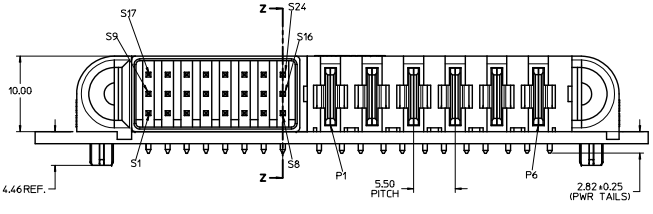
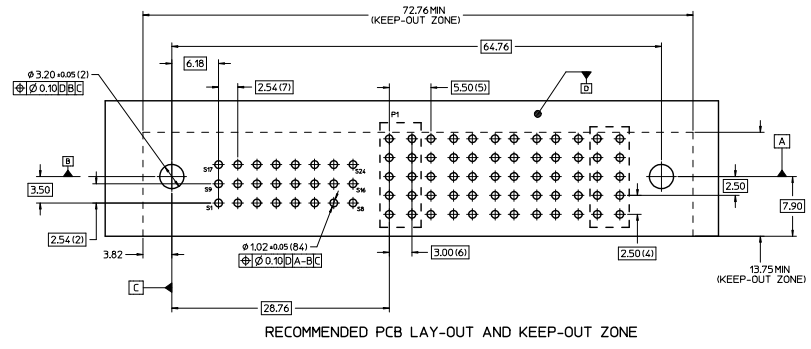
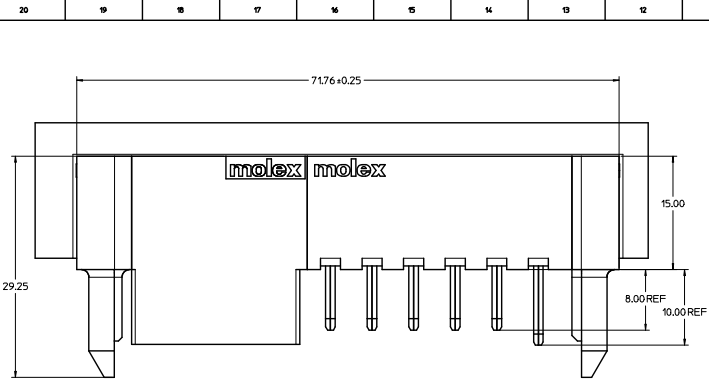
Stocking Distributor

Click to view price, real time Inventory, Delivery & Lifecycle Information:

[Molex Connector Corporation](#)
[0464373006](#)

For any questions, you can email us directly:

sales@integrated-circuit.com



NOTES:

1. MATERIAL:
-HOUSINGS: LCP UL94, V-0, COLOR: BLACK.
-TERMINALS: COPPER ALLOY.
-PLATING: 0.00027 NICKEL OVERALL WITH 0.00254 SELECTIVE TIN ON SOLDER TAILS AND 0.000762 SELECTIVE GOLD ON CONTACT AREA.
2. ASSEMBLES PACKED IN TRAYS, SPQ: 180.
3. PC BOARD REQUIRES SOLDER THRU HOLES, REFER TO PS-46436-100 FOR DETAILS.
4. PRODUCT SPEC: PS-46436-100.
5. APPLICATION SPEC: AS-46436-100.
6. PRODUCT TO MEET RoHS REQUIREMENTS.
7. ASSEMBLY MATES TO MOLEX RECEPTACLE ASSEMBLY P/N 46436-3006 OR 46562-3006.

RELEASED INITIAL RELEASED 2009/05/05 CHECKED/INITIALS 2009/05/05 APPROVED/PANEL 2009/05/05 REVISION DESCRIPTION	QUALITY SYMBOLS	GENERAL TOLERANCES (UNLESS SPECIFIED)	DIMENSION STYLE	SCALE	DESIGN UNITS	THIRD ANGLE PROJECTION
		mm INCH	MM ONLY	NTS	METRIC	
	4 PLACES ± 0.25	± 0.25	DATE	DATE	TITLE	
	3 PLACES ± 0.25	± 0.25	DATE	DATE	RA PLUG ASSY	
	1 PLACE ± 0.25	± 0.25	DATE	DATE	TEN60 POWER	
	ANGULAR ± 1/2°	± 1/2°	DATE	DATE	G-24S-6P G	
	DRAFT WHERE APPLICABLE MUST REMAIN WITHIN DIMENSIONS		PARTIAL NO. 46437-3006	DOCUMENT NO. SD-46437-3006	SHEET NO. 1 OF 1	
			MOLEX INCORPORATED			
			THIS DRAWING CONTAINS INFORMATION THAT IS PROPRIETARY TO MOLEX INCORPORATED AND SHOULD NOT BE USED WITHOUT WRITTEN PERMISSION			