

Excellent Integrated System Limited

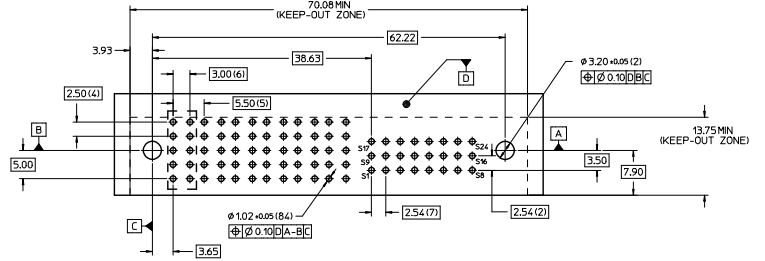
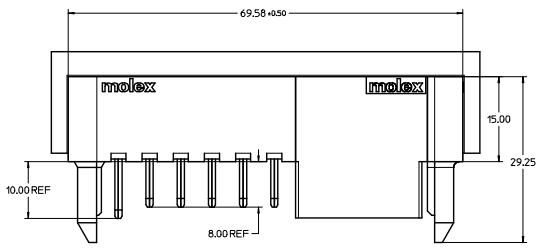
Stocking Distributor

Click to view price, real time Inventory, Delivery & Lifecycle Information:

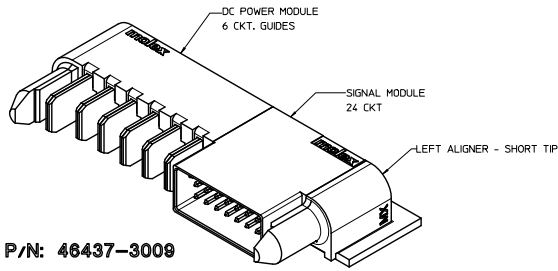
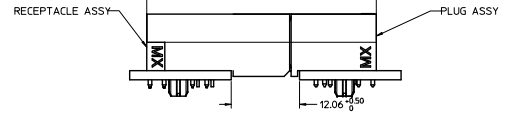
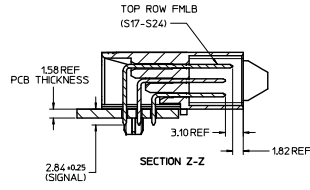
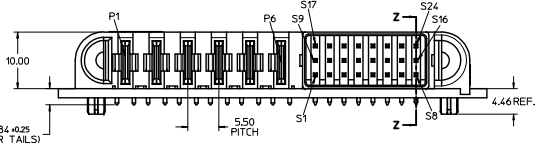
[Molex Connector Corporation](#)
[0464373009](#)

For any questions, you can email us directly:

sales@integrated-circuit.com



RECOMMENDED PCB LAY-OUT AND KEEP-OUT ZONE



P/N: 46437-3009

NOTES:
1. MATERIAL:

- HOUSINGS: LCP UL94, V-0, COLOR: BLACK.
- TERMINALS: COPPER ALLOY.
- PLATING: 0.00127 NICKEL OVERALL WITH 0.00254 SELECTIVE TIN ON SOLDER TAILS AND 0.00127 SELECTIVE GOLD ON CONTACT AREA.
- 2. ASSEMBLIES PACKED IN TRAYS, SPO: TBD
- 3. PC BOARD REQUIRES SOLDER THRU HOLES. REFER TO PS-46436-100 FOR DETAILS
- 4. PRODUCT SPEC: PS-46436-100.
- 5. APPLICATION SPEC: AS-46436-100.
- 6. PRODUCT TO MEET RoHS REQUIREMENTS.
- 7. ASSEMBLY MATES TO MOLEX RECEPTACLE ASSEMBLY P/N 46436-3009 OR 46562-3009.

QUALITY SYMBOLS	GENERAL TOLERANCES (UNLESS SPECIFIED)		DIMENSION STYLE		SCALE	DESIGN UNITS	THIRD ANGLE PROJECTION
	mm	INCH	MM ONLY	DATE			
4 PLACES ±---	±---	±---	KJKOH	2009/03/11	NTS	METRIC	RA PLUG ASSY TEN60 POWER G-6P-24S-(IBM)
3 PLACES ±---	±---	±---	KJKOH	2009/03/11			
2 PLACES ± 0.25	±---	±---	KJKOH	2009/03/11			
1 PLACE ± 0.25	±---	±---	APPROVED BY	DATE			
ANGULAR ±1/2°			SHONG				
DRAFT WHERE APPLICABLE MUST REMAIN WITHIN DIMENSIONS			MATERIAL NO.	46437-3009	DOCUMENT NO.	SD-46437-309	SHEET NO. 1 OF 1
			THIS DRAWING CONTAINS INFORMATION THAT IS PROPRIETARY TO MOLEX INCORPORATED AND SHOULD NOT BE USED WITHOUT WRITTEN PERMISSION				