

## Excellent Integrated System Limited

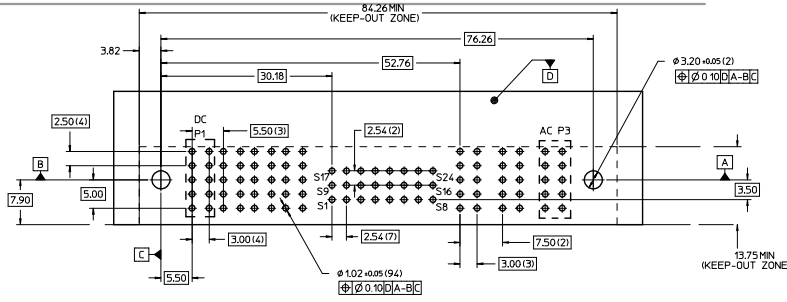
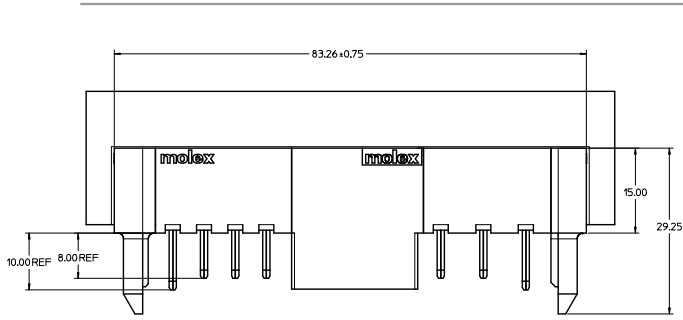
Stocking Distributor

Click to view price, real time Inventory, Delivery & Lifecycle Information:

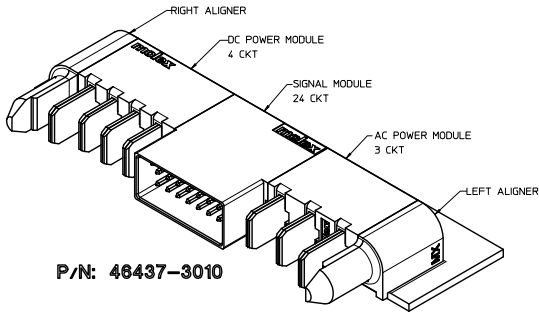
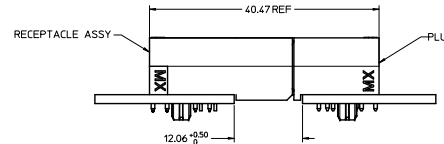
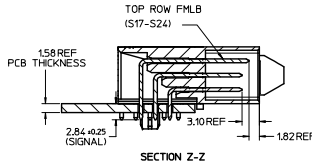
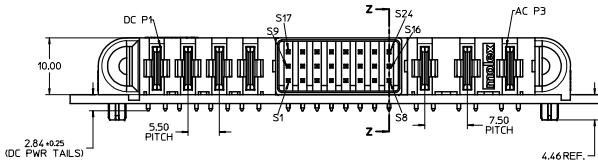
[Molex Connector Corporation](#)  
[0464373010](#)

For any questions, you can email us directly:

[sales@integrated-circuit.com](mailto:sales@integrated-circuit.com)



RECOMMENDED PCB LAY-OUT AND KEEP-OUT ZONE



NOTES:

1. MATERIAL:  
-HOUSINGS: LCP UL94, V-0, COLOR: BLACK.  
-TERMINALS: COPPER ALLOY.  
-PLATING: 0.00127 NICKEL OVERALL WITH 0.000254 SELECTIVE TIN ON SOLDER TAILS AND 0.000762 SELECTIVE GOLD ON CONTACT AREA.
2. ASSEMBLES PACKED IN TRAYS. SPO: TBD
3. PC BOARD REQUIRES SOLDER THRU HOLES. REFER TO PS-46436-100 FOR DETAILS
4. PRODUCT SPEC: PS-46436-100.
5. APPLICATION SPEC: AS-46436-100.
6. PRODUCT TO MEET RoHS REQUIREMENTS.
7. ASSEMBLY MATES TO MOLEX RECEPTACLE ASSEMBLY P/N 46436-3010 OR 46562-3010.

QUALITY SYMBOLS	GENERAL TOLERANCES (UNLESS SPECIFIED)		DIMENSION STYLE		SCALE	DESIGN UNITS	THIRD ANGLE PROJECTION
	mm	INCH	MM ONLY	DATE			
4 PLACES	± 0.25	± 0.010	DRAWN BY	DATE	NTS	METRIC	
3 PLACES	± 0.25	± 0.010	CHECKED BY	DATE			
2 PLACES	± 0.25	± 0.010	APPROVED BY	DATE			
1 PLACE	± 0.25	± 0.010	ANGULAR ± 1/2°		SHOWN	MOLEX INCORPORATED	
DRAFT WHERE APPLICABLE MUST REMAIN WITHIN DIMENSIONS			PARTIAL NO. 46437-3010		DOCUMENT NO. SD-46437-310	SHEET NO. 1 OF 1	
THIS DRAWING CONTAINS INFORMATION THAT IS PROPRIETARY TO MOLEX INCORPORATED AND SHOULD NOT BE USED WITHOUT WRITTEN PERMISSION							