

## **Excellent Integrated System Limited**

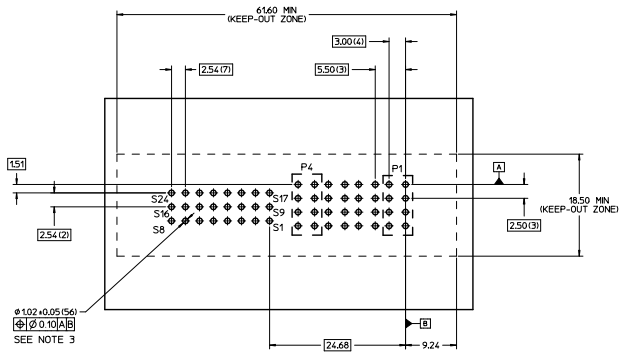
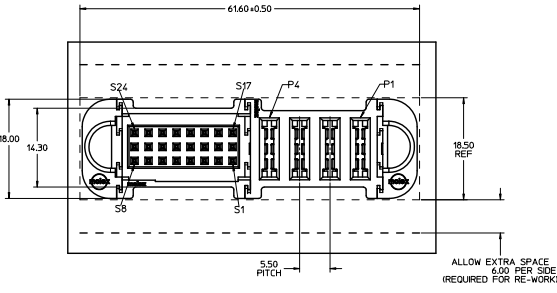
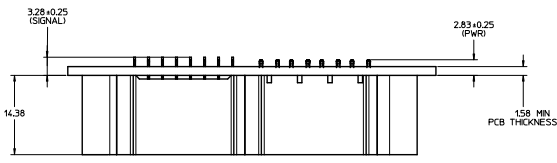
Stocking Distributor

Click to view price, real time Inventory, Delivery & Lifecycle Information:

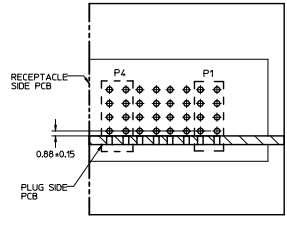
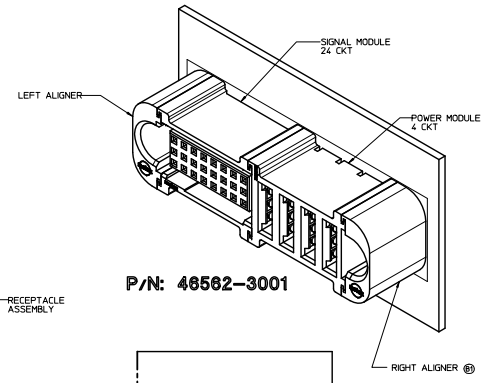
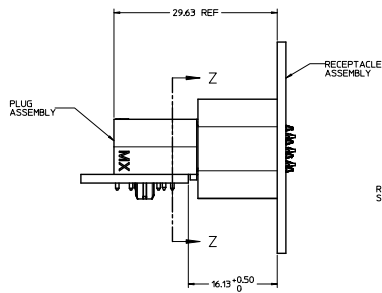
[Molex Connector Corporation](#)  
[0465623001](#)

For any questions, you can email us directly:  
[sales@integrated-circuit.com](mailto:sales@integrated-circuit.com)

20 19 18 17 16 15 14 13 12 11 10 9 8 7 6 5 4 3 2 1



RECOMMENDED PCB LAYOUT AND KEEP-OUT ZONE



SECTION Z-Z

- NOTES:
- MATERIAL:  
-HOUSINGS: LCP UL94 V-0, COLOR: BLACK.  
-TERMINALS: COPPER ALLOY.  
-PLATING: 0.000027 NICKEL OVERALL WITH 0.00254 SELECTIVE TIN ON COMPLIANT PINS, AND 0.000762 SELECTIVE GOLD ON CONTACT AREA.
  - ASSEMBLIES PACKED IN TRAYS. SPO: TBD.
  - PC BOARD REQUIRES THRU HOLES, REFER TO PS-46436-100 FOR DETAILS.
  - PRODUCT SPEC: PS-46436-100.
  - APPLICATION SPEC: AS-46436-100.
  - PRODUCT TO MEET ROHS REQUIREMENTS.
  - ASSEMBLY MATES WITH PLUG ASSEMBLY, P/N 46437-3001.

UPDATE DESCRIPTION REC NO. 10/27/03-1783 DRW/CHK/APP/DES BZ 20/01/07 20/02/08 20/02/10 20/02/10	QUALITY SYMBOLS	GENERAL TOLERANCES (UNLESS SPECIFIED)	DIMENSION STYLE	SCALE	DESIGN UNITS	THIRD ANGLE PROJECTION
		mm INCH	MM ONLY	3:1	METRIC	
	4 PLACES ±--- ±---	±--- ±---	KJKUH	DATE	TITLE	
	3 PLACES ±--- ±---	±--- ±---	NG	2009/03/11	VERT. RECPT ASSY	
2 PLACES ±0.25 ±---	±--- ±---	NG	DATE	4P-24S, PRESS-FIT	MOLEX INCORPORATED	
1 PLACE ±0.25 ±---	±--- ±---	SHONG	2009/05/06	TEN60 POWER FAMILY		
	ANGULAR ±1/2°					
	DRAFT WHERE APPLICABLE MUST REMAIN WITHIN DIMENSIONS					
			MATERIAL NO.	DOCUMENT NO.		SHEET NO.
			46562-3001	SD-46562-301		1 OF 1
			THIS DRAWING CONTAINS INFORMATION THAT IS PROPRIETARY TO MOLEX INCORPORATED AND SHOULD NOT BE USED WITHOUT WRITTEN PERMISSION			

19 18 17 16 15 14 13 12 11 10 9 8 7 6 5 4 3 2 1