

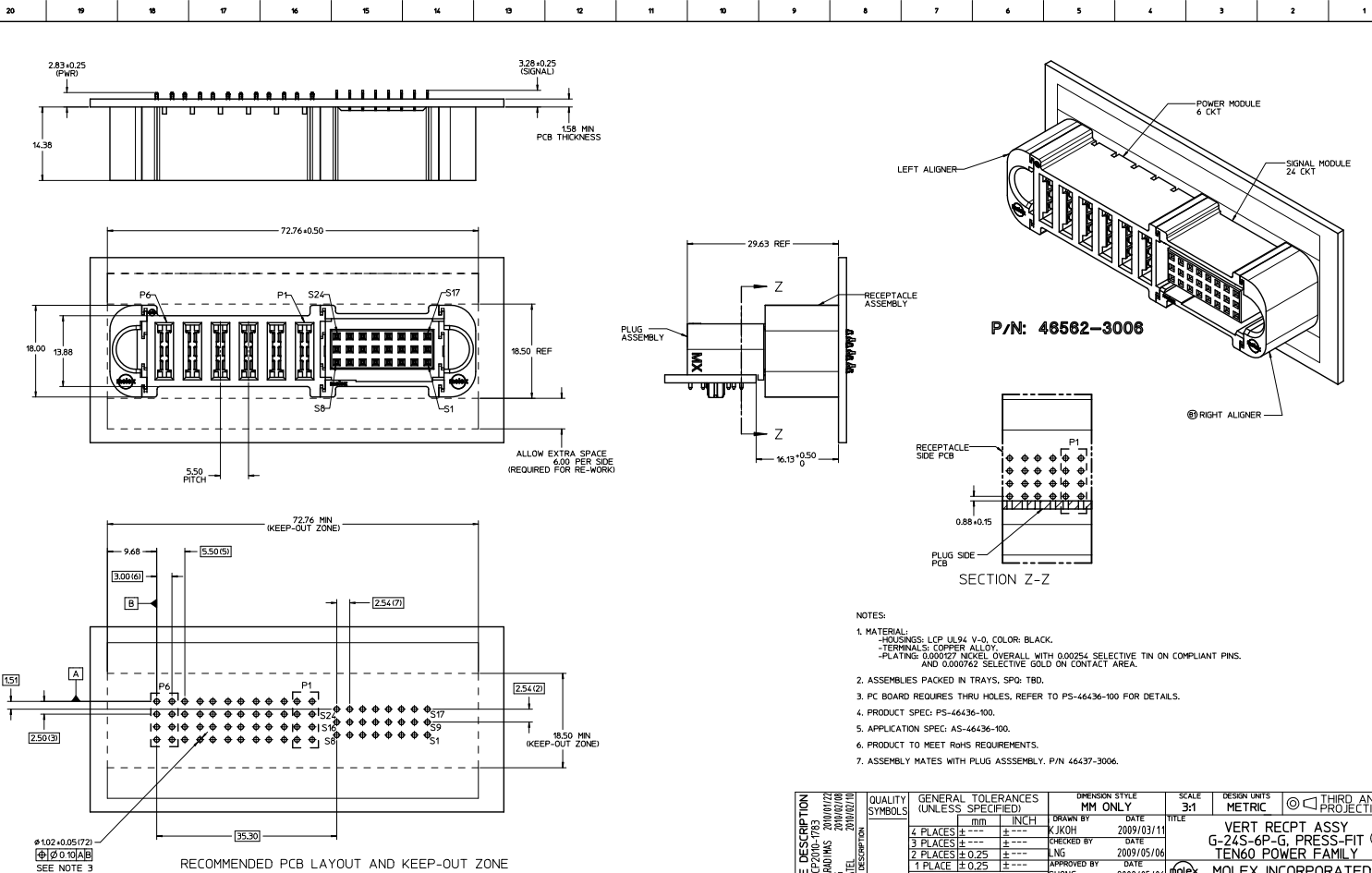
## **Excellent Integrated System Limited**

Stocking Distributor

Click to view price, real time Inventory, Delivery & Lifecycle Information:

[Molex Connector Corporation](#)  
[0465623006](#)

For any questions, you can email us directly:  
[sales@integrated-circuit.com](mailto:sales@integrated-circuit.com)



**P/N: 46562-3006**

- NOTES:**
- MATERIAL:**
    - HOUSINGS: LCP UL94 V-0, COLOR: BLACK.
    - TERMINALS: COPPER ALLOY
    - PLATING: 0.000127 NICKEL OVERALL WITH 0.00254 SELECTIVE TIN ON COMPLIANT PINS. AND 0.000762 SELECTIVE GOLD ON CONTACT AREA.
  - ASSEMBLIES PACKED IN TRAYS, SPO: T80.
  - PC BOARD REQUIRES THRU HOLES, REFER TO PS-46436-100 FOR DETAILS.
  - PRODUCT SPEC: PS-46436-100.
  - APPLICATION SPEC: AS-46436-100.
  - PRODUCT TO MEET RoHS REQUIREMENTS.
  - ASSEMBLY MATES WITH PLUG ASSEMBLY, P/N 46437-3006.

<b>UPDATE DESCRIPTION</b> REC NO. LEP2003-1783 DRAWN/ISSUED/REV. 2009/07/22 CHECKING 2009/07/20 APPROVAL 2009/07/20 DESIGNED BY	<b>QUALITY SYMBOLS</b>		<b>GENERAL TOLERANCES (UNLESS SPECIFIED)</b>		<b>DIMENSION STYLE</b> MM ONLY		SCALE 3:1	DESIGN UNITS METRIC	THIRD ANGLE PROJECTION
	4 PLACES	±	---	mm	INCH	DRAWN BY	DATE	TITLE	
	3 PLACES	±	---	mm	INCH	KJKOH	2009/03/11	VERT RECPT ASSY	
	2 PLACES	±	---	mm	INCH	NG	2009/05/06	G-24S-6P-G PRESS-FIT	
1 PLACE	±	---	mm	INCH	SHONG	2009/05/06	TEN60 POWER FAMILY		
ANGULAR ±1/2°			MATERIAL NO. 46562-3006			MOLEX INCORPORATED			
DRAFT WHERE APPLICABLE MUST REMAIN WITHIN DIMENSIONS			SIZE D			DOCUMENT NO. SD-46562-3006			SHEET NO. 1 OF 1