

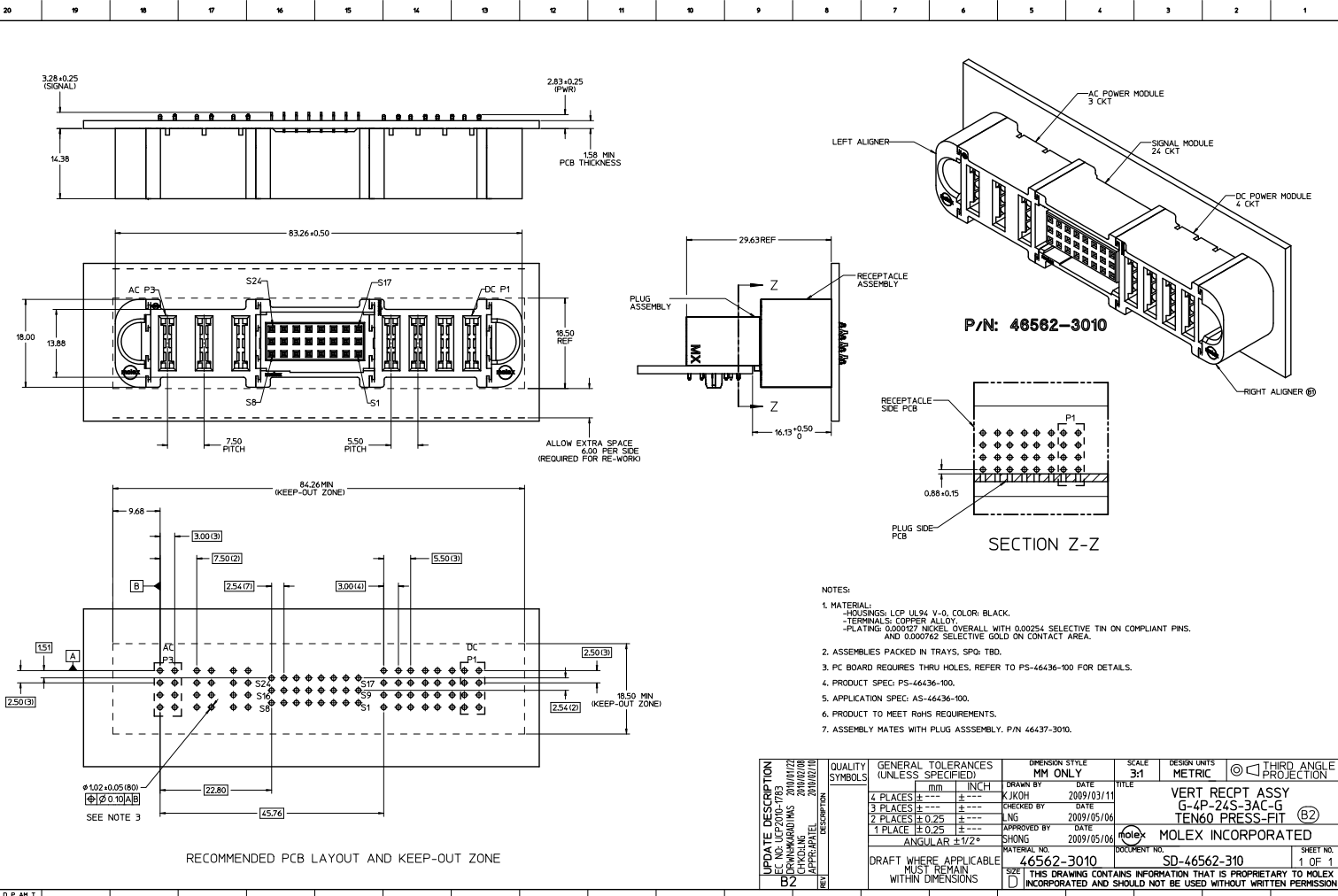
Excellent Integrated System Limited

Stocking Distributor

Click to view price, real time Inventory, Delivery & Lifecycle Information:

[Molex Connector Corporation](#)
[0465623010](#)

For any questions, you can email us directly:
sales@integrated-circuit.com



P/N: 46562-3010

- NOTES:
- MATERIAL:
 - HOUSINGS: LCP UL94 V-0, COLOR: BLACK.
 - TERMINALS: COPPER ALLOY.
 - PLATING: 0.000127 NICKEL OVERALL WITH 0.00254 SELECTIVE TIN ON COMPLIANT PINS. AND 0.000762 SELECTIVE GOLD ON CONTACT AREA.
 - ASSEMBLIES PACKED IN TRAYS, SPQ: TBD.
 - PC BOARD REQUIRES THRU HOLES, REFER TO PS-46436-100 FOR DETAILS.
 - PRODUCT SPEC: PS-46436-100.
 - APPLICATION SPEC: AS-46436-100.
 - PRODUCT TO MEET ROHS REQUIREMENTS.
 - ASSEMBLY MATES WITH PLUG ASSEMBLY, P/N 46437-3010.

UPDATE DESCRIPTION DEC 10 15:27:00 - FRS DRN/KN/KARD/MS 2010/07/22 CHECKING 2010/07/08 APPROVAL 2010/07/10 NEW	QUALITY SYMBOLS		GENERAL TOLERANCES (UNLESS SPECIFIED)		DIMENSION STYLE MM ONLY		SCALE 3:1 DESIGN UNITS METRIC THIRDO ANGLE PROJECTION	
	4 PLACES ± --- ± --- 3 PLACES ± --- ± --- 2 PLACES ± 0.25 ± --- 1 PLACE ± 0.25 ± ---		INCH ± --- ± --- ANGULAR ± 1/2°		DRAWN BY DATE KJKOH 2009/03/11 CHECKED BY DATE LING 2009/05/06 APPROVED BY DATE SHONG 2009/05/06		TITLE VERT RECPT ASSY G-4P-24S-3AC-G TEN60 PRESS-FIT (B2)	
	DRAFT WHERE APPLICABLE MUST REMAIN WITHIN DIMENSIONS		MATERIAL NO. 46562-3010		DOCUMENT NO. SD-46562-310		SHEET NO. 1 OF 1	
	INCORPORATED AND SHOULD NOT BE USED WITHOUT WRITTEN PERMISSION				MOLEX INCORPORATED			