

## Excellent Integrated System Limited

Stocking Distributor

Click to view price, real time Inventory, Delivery & Lifecycle Information:

[International Rectifier \(Infineon Technologies Americas Corp.\)  
IPS0551T](#)

For any questions, you can email us directly:

[sales@integrated-circuit.com](mailto:sales@integrated-circuit.com)

**FULLY PROTECTED POWER MOSFET SWITCH**

**Features**

- Over temperature shutdown
- Over current shutdown
- Active clamp
- Low current & logic level input
- E.S.D protection

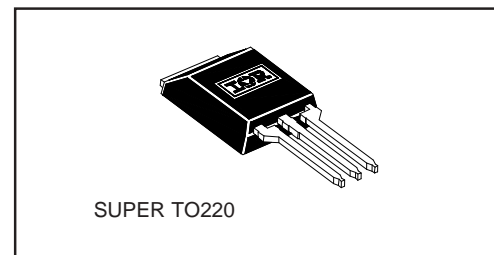
**Description**

The IPS0551T is a fully protected three terminal SMART POWER MOSFET that features over-current, over-temperature, ESD protection, and drain to source active clamp. This device combines a HEXFET® POWER MOSFET and a gate driver. It offers full protection and high reliability required in harsh environments. The driver allows short switching times and provides efficient protection by turning OFF the power MOSFET when temperature exceeds 165°C or when the drain current reaches 100A. The device restarts once the input is cycled. The avalanche capability is significantly enhanced by the active clamp and covers most inductive load demagnetizations.

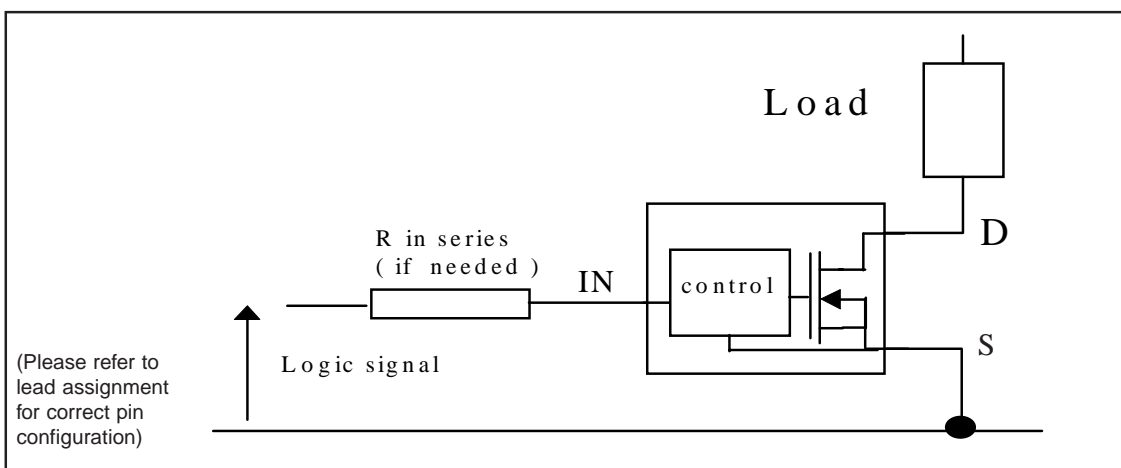
**Product Summary**

$R_{ds(on)}$	6.0mΩ (max)
$V_{clamp}$	40V
$I_{shutdown}$	100A
$T_{on}/T_{off}$	4μs

**Package**



**Typical Connection**



## IPS0551T

International  
**IR** Rectifier

### Absolute Maximum Ratings

Absolute maximum ratings indicate sustained limits beyond which damage to the device may occur. All voltage parameters are referenced to SOURCE lead. (T<sub>Ambient</sub> = 25°C unless otherwise specified). PCB mounting uses the standard footprint with 70 μm copper thickness.

Symbol	Parameter	Min.	Max.	Units	Test Conditions
V <sub>ds</sub>	Maximum drain to source voltage	—	37	V	
V <sub>in</sub>	Maximum input voltage	-0.3	7		
I <sub>+in</sub>	Maximum IN current	-10	+10	mA	
I <sub>sd cont.</sub>	Diode max. continuous current <sup>(1)</sup> (r <sub>th</sub> =60°C/W)	—	2.8	A	
		(r <sub>th</sub> =5°C/W)	—		35
I <sub>sd pulsed</sub>	Diode max. pulsed current <sup>(1)</sup>	—	100		
P <sub>d</sub>	Maximum power dissipation <sup>(1)</sup> (r <sub>th</sub> =60°C/W)	—	2	W	
ESD1	Electrostatic discharge voltage (Human Body)	—	4	kV	C=100pF, R=1500Ω,
ESD2	Electrostatic discharge voltage (Machine Model)	—	0.5		C=200pF, R=0Ω, L=10μH
T <sub>stor.</sub>	Max. storage temperature	-55	150	°C	
T <sub>j max.</sub>	Max. junction temperature	-40	+150		
T <sub>lead</sub>	Lead temperature (soldering, 10 seconds)	—	300		

### Thermal Characteristics

Symbol	Parameter	Min.	Typ.	Max.	Units	Test Conditions
R <sub>th 1</sub>	Thermal resistance free air	—	60	—	°C/W	
R <sub>th 2</sub>	Thermal resistance to PCB min footprint	—	60	—		
R <sub>th 3</sub>	Thermal resistance to PCB 1" sq. footprint	—	35	—		
R <sub>th 4</sub>	Thermal resistance junction to case	—	0.7	—		

### Recommended Operating Conditions

These values are given for a quick design. For operation outside these conditions, please consult the application notes.

Symbol	Parameter	Min.	Max.	Units
V <sub>ds (max)</sub>	Continuous drain to source voltage	—	18	V
V <sub>IH</sub>	High level input voltage	4	6	
V <sub>IL</sub>	Low level input voltage	0	0.5	
I <sub>ds</sub> T <sub>amb</sub> =85°C	Continuous drain current (T <sub>Ambient</sub> = 85°C, I <sub>N</sub> = 5V, r <sub>th</sub> = 80°C/W, T <sub>j</sub> = 125°C) (T <sub>Ambient</sub> = 85°C, I <sub>N</sub> = 5V, r <sub>th</sub> = 5°C/W, T <sub>j</sub> = 125°C)	—	8	A
		—	35	
R <sub>in</sub>	Recommended resistor in series with IN pin	0.1	0.5	kΩ
T <sub>r-in (max)</sub>	Max recommended rise time for IN signal (see fig. 2)	—	1	μS
F <sub>r-lsc</sub> <sup>(2)</sup>	Max. frequency in short circuit condition (V <sub>cc</sub> = 14V)	0	1	kHz

(1) Limited by junction temperature (pulsed current limited also by internal wiring)

(2) Operation at higher switching frequencies is possible. See Appl. Notes.

International  
**IR** Rectifier

## IPS0551T

### Static Electrical Characteristics

(T<sub>j</sub> = 25°C and V<sub>cc</sub> = 14V unless otherwise specified. Standard footprint 70µm of copper thickness)

Symbol	Parameter	Min.	Typ.	Max.	Units	Test Conditions
R <sub>ds(on)</sub> @T <sub>j</sub> =25°C	ON state resistance T <sub>j</sub> = 25°C	—	4.5	6.0	mΩ	V <sub>in</sub> = 5V, I <sub>ds</sub> = 10A
R <sub>ds(on)</sub> @T <sub>j</sub> =150°C	ON state resistance T <sub>j</sub> = 150°C	—	7.5	8.8		
I <sub>dss</sub> @T <sub>j</sub> =25°C	Drain to source leakage current	0	0.01	25	µA	V <sub>cc</sub> = 14V, T <sub>j</sub> = 25°C
V <sub>clamp 1</sub>	Drain to source clamp voltage 1	37	40	—	V	I <sub>d</sub> = 20mA (see Fig.3 & 4) I = 35A -t<100us I <sub>d</sub> = 35A, V <sub>in</sub> = 0V I <sub>in</sub> = 1 mA I <sub>d</sub> = 50mA, V <sub>ds</sub> = 14V
V <sub>clamp 2</sub>	Drain to source clamp voltage 2	—	43	48		
V <sub>sd</sub>	Body diode forward voltage	—	0.85	1		
V <sub>in clamp</sub>	IN to source clamp voltage	7	8.0	9.5		
V <sub>th</sub>	IN threshold voltage	1.0	1.8	2.2		
I <sub>in, on</sub>	Input supply current (normal operation)	25	90	300	µA	V <sub>in</sub> = 5V
I <sub>in, off</sub>	Input supply current (protection mode)	50	130	400		V <sub>in</sub> = 5V over-current triggered

### Switching Electrical Characteristics

V<sub>cc</sub> = 14V, Resistive Load = 0.4Ω, R<sub>input</sub> = 50Ω, 100µs pulse, T<sub>j</sub> = 25°C, (unless otherwise specified).

Symbol	Parameter	Min.	Typ.	Max.	Units	Test Conditions
T <sub>on</sub>	Turn-on delay time	0.25	1	4	µs	See figure 2
T <sub>r</sub>	Rise time	0.25	1	4		
T <sub>rf</sub>	Time to 130% final R <sub>ds(on)</sub>	—	15	—		
T <sub>off</sub>	Turn-off delay time	1.5	4	8		See figure 2
T <sub>f</sub>	Fall time	0.5	2	5		
Q <sub>in</sub>	Total gate charge	—	200	—	nC	V <sub>in</sub> = 5V

### Protection Characteristics

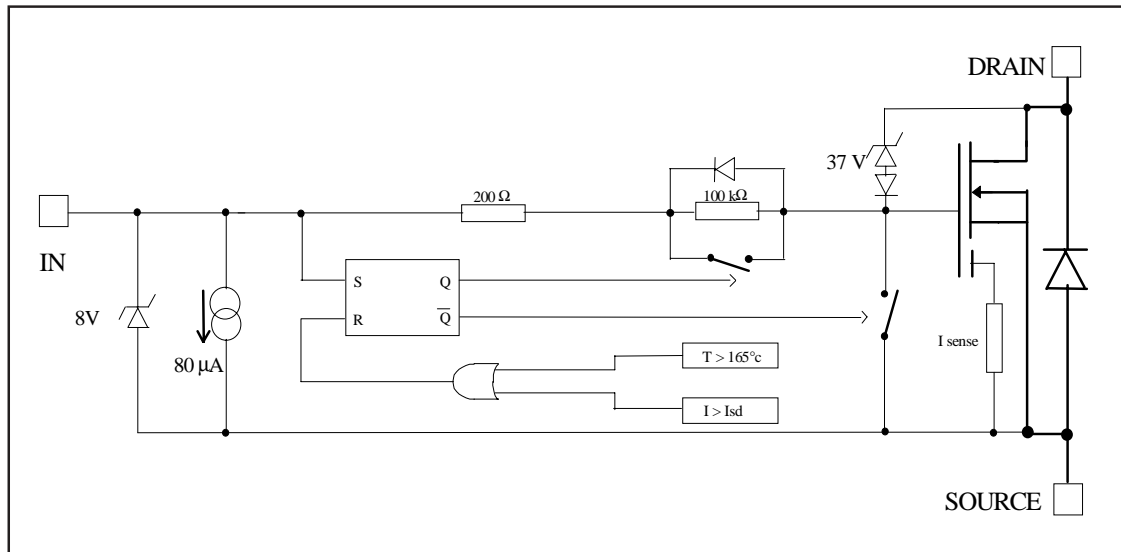
Symbol	Parameter	Min.	Typ.	Max.	Units	Test Conditions
T <sub>sd</sub>	Over temperature threshold	—	165	—	°C	See fig. 1
I <sub>sd</sub>	Over current threshold	60	100	150	A	See fig. 1
V <sub>reset</sub>	IN protection reset threshold	1.5	1.9	2.8	V	
T <sub>reset</sub>	Time to reset protection	2	10	40	µs	V <sub>in</sub> = 0V, T <sub>j</sub> = 25°C
EOI_OT	Short circuit energy (cf application note)	100	400	1200	µJ	V <sub>cc</sub> = 14V

# IPS0551T

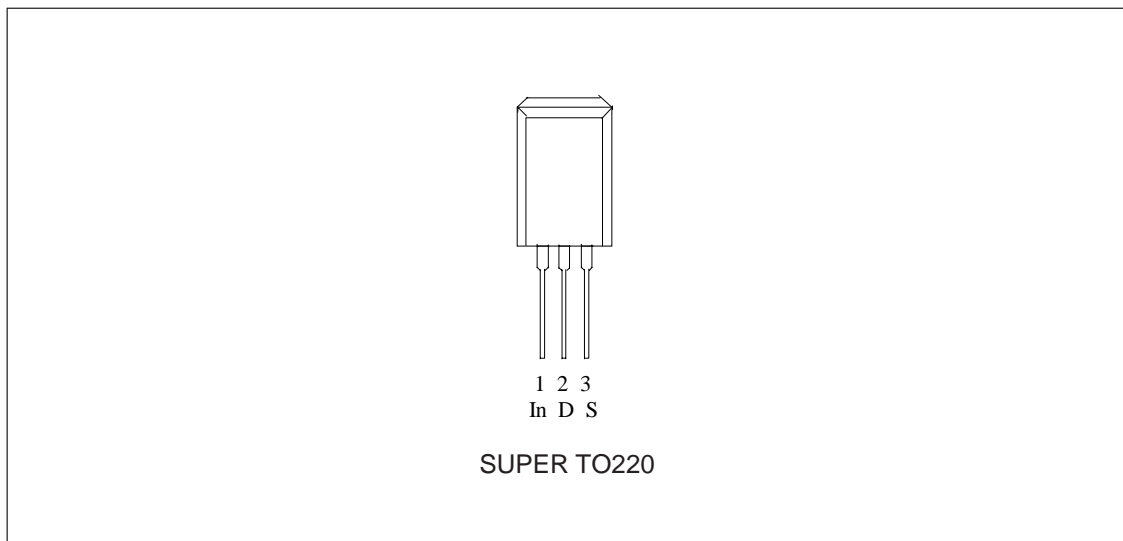
International  
**IR** Rectifier

## Functional Block Diagram

All values are typical



## Lead Assignments



International  
**IR** Rectifier

# IPS0551T

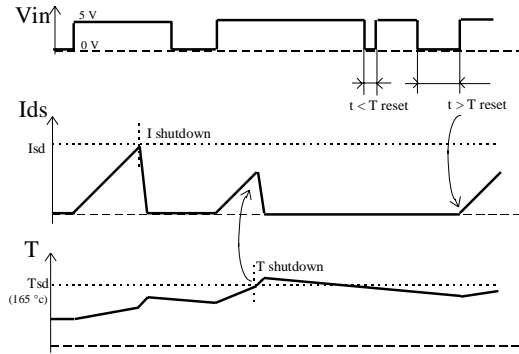


Figure 1 - Timing diagram

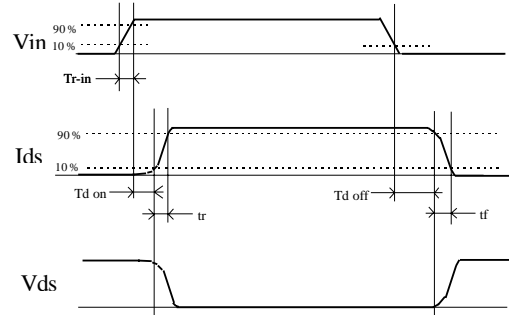


Figure 2 - IN rise time & switching time definitions

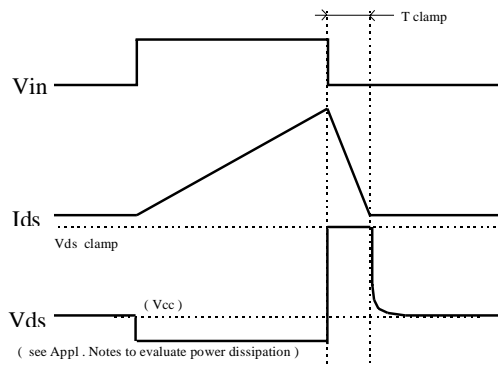


Figure 3 - Active clamp waveforms

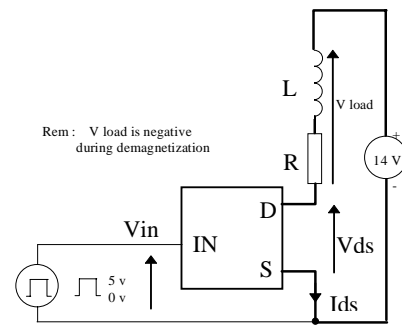


Figure 4 - Active clamp test circuit

# IPS0551T



All curves are typical values with standard footprint. Operating in the shaded area is not recommended.

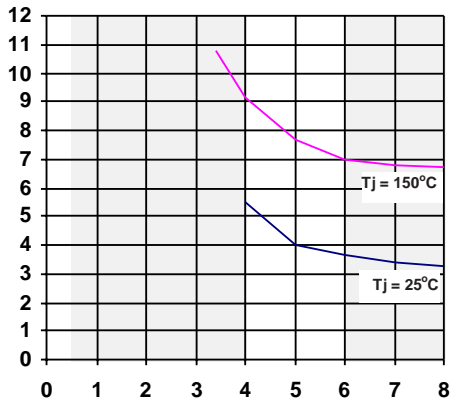


Figure 5 - Rds(on) (mΩ) Vs Input Voltage (V)

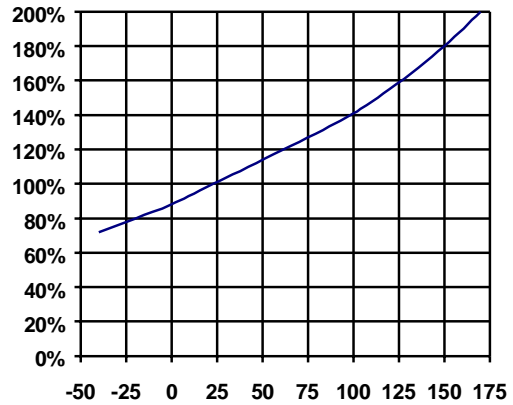


Figure 6 - Normalised Rds(on) (%) Vs Tj (°C)

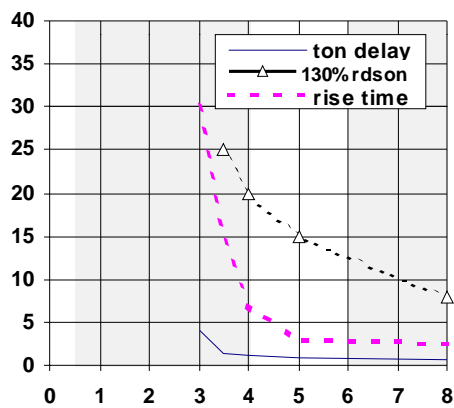


Figure 7 - Turn-ON Delay Time, Rise Time & Time to 130% final Rds(on) (us) Vs Input Voltage (V)

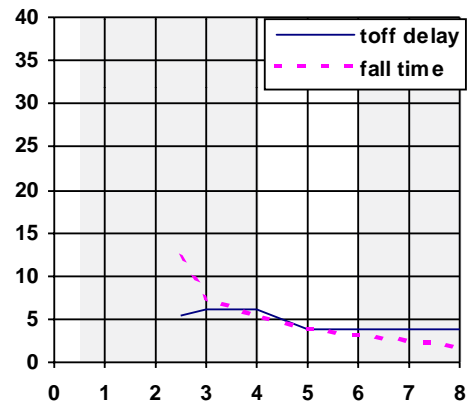


Figure 8 - Turn-OFF Delay Time & Fall Time (us) Vs Input Voltage (V)

International  
**IR** Rectifier

**IPS0551T**

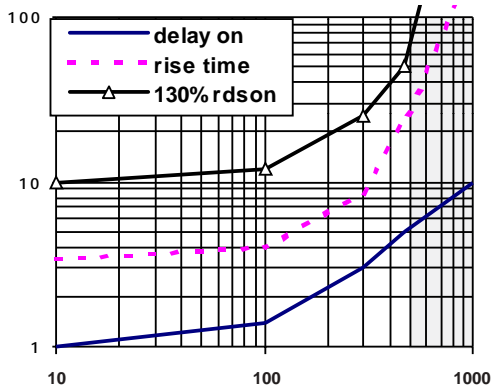


Figure 9 - Turn-ON Delay Time, Rise Time & Time to 130% final R<sub>ds(on)</sub> (us) Vs IN Resistor (Ω)

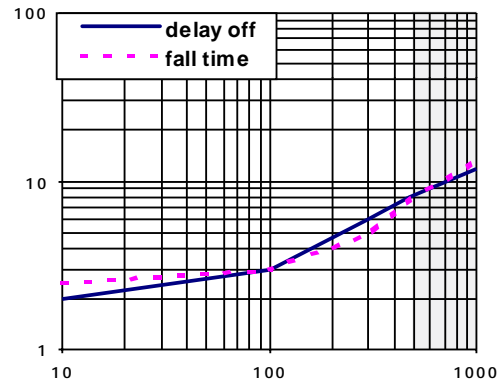


Figure 10 - Turn-OFF Delay Time & Fall Time (us) Vs IN Resistor (Ω)

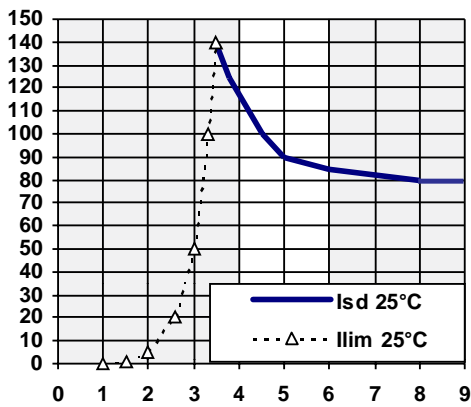


Figure 11 - Current lim. & I<sub>shutdown</sub> (A) Vs V<sub>in</sub> (V)

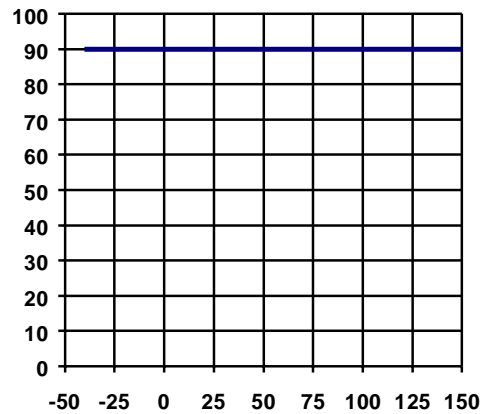


Figure 12 - Over-current (A) Vs Temperature (°C)



**IPS0551T**

International  
**IR** Rectifier

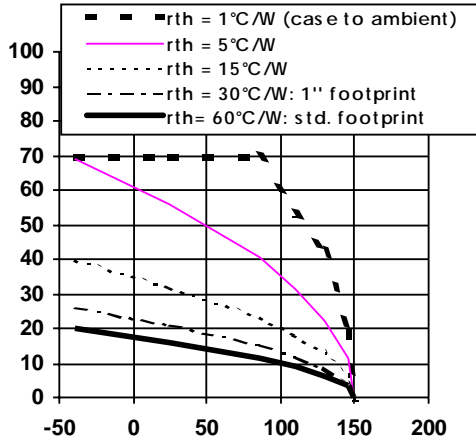


Figure 13 - Max.Cont. Ids (A) Vs Amb. Temperature (°C)

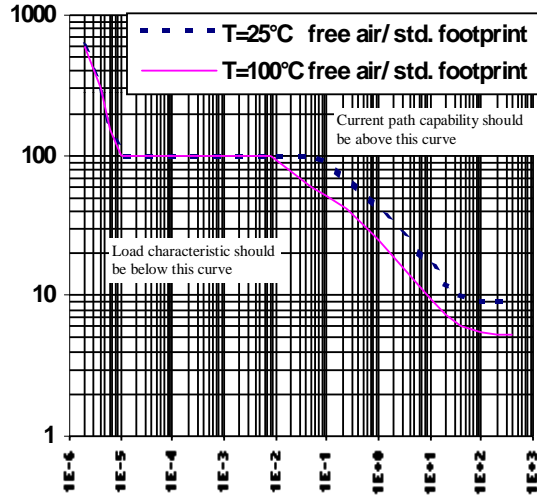


Figure 14 - Ids (A) Vs Protection Resp. Time (s)

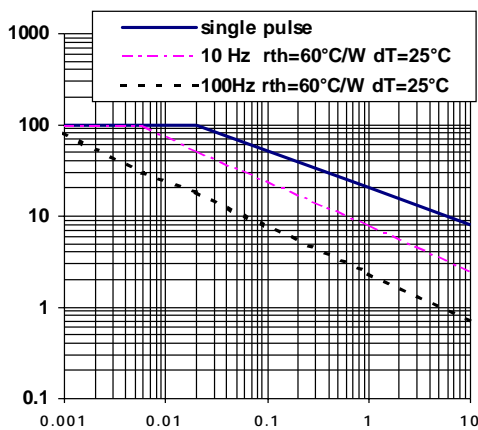


Figure 15 - Iclamp (A) Vs Inductive Load (mH)

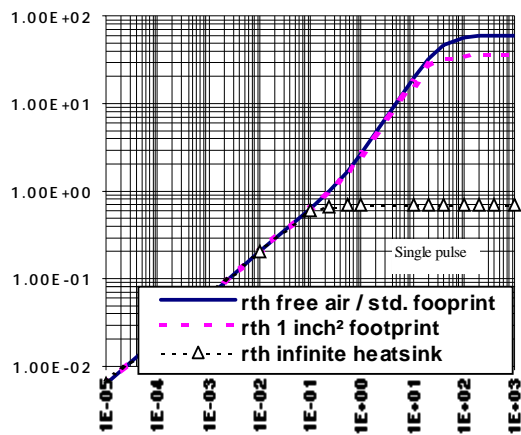


Figure 16 - Transient Thermal Imped. (°C/W) Vs Time (s)

International  
**IR** Rectifier

## IPS0551T

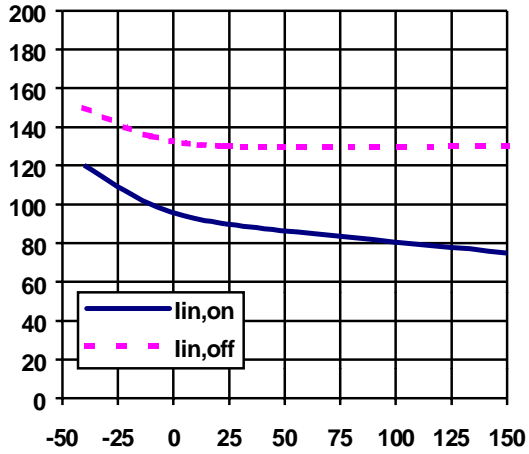


Figure 17 - Inputcurrent (µA) Vs Junction (°C)

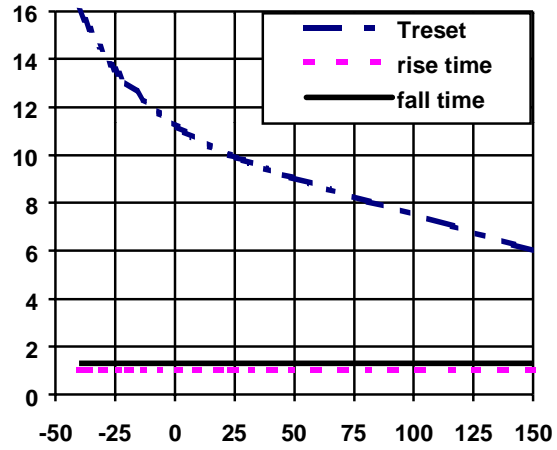


Figure 18 - Turn-on, Turn-off and Treset (µS) Vs Tj (°C)

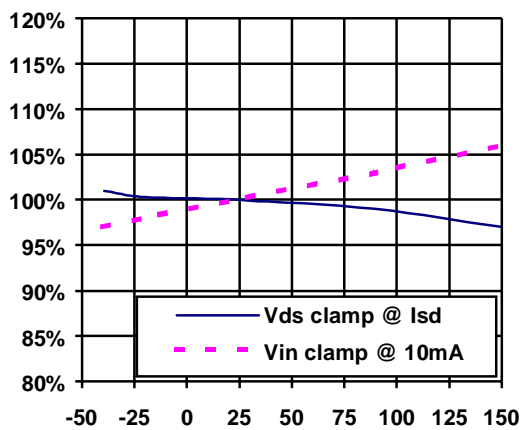
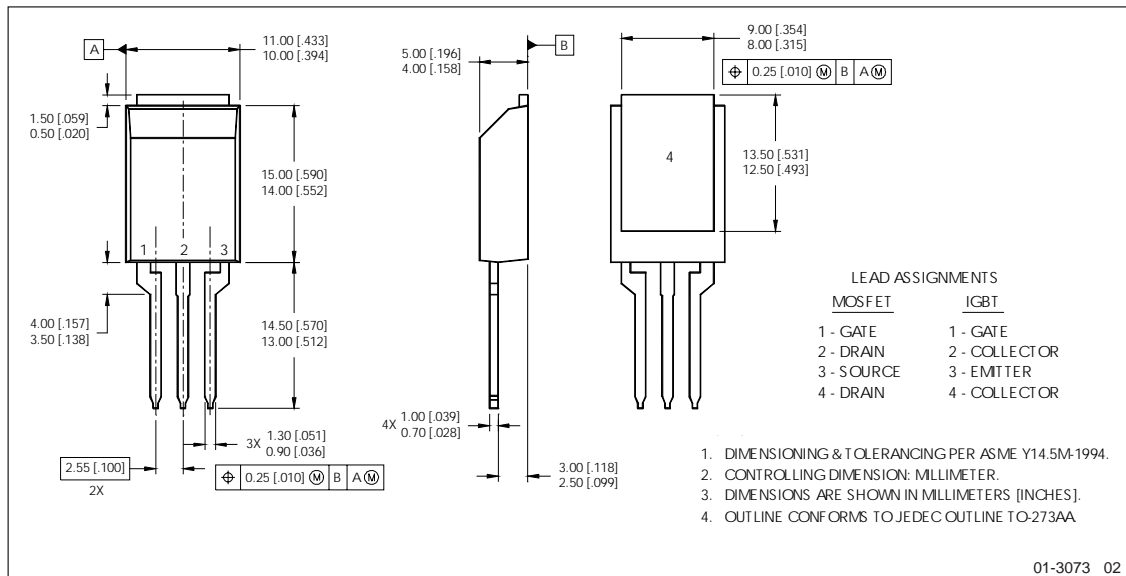


Figure 19 - Vin clamp1 & Vin clamp2 (%) Vs Tj (°C)

# IPS0551T

International  
**IR** Rectifier

## Case outline Super TO220



International  
**IR** Rectifier

**IR WORLD HEADQUARTERS:** 233 Kansas Street, El Segundo, California 90245 Tel: (310) 252-7105  
 Data and specifications subject to change without notice. 6/21/2002