

Excellent Integrated System Limited

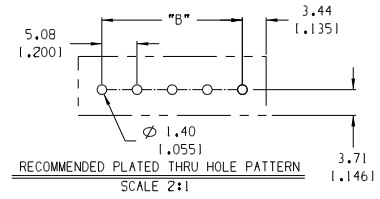
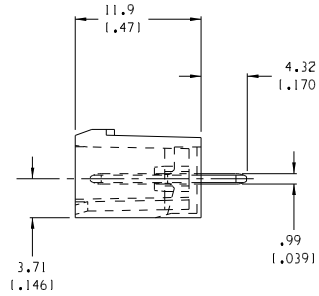
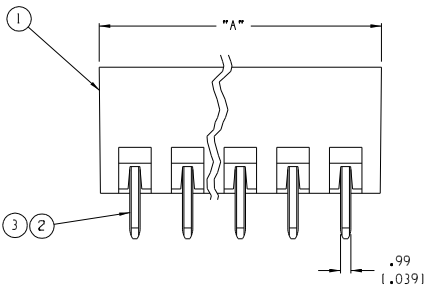
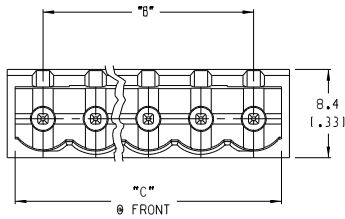
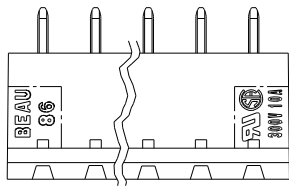
Stocking Distributor

Click to view price, real time Inventory, Delivery & Lifecycle Information:

[Molex Connector Corporation](#)
[39860-0503](#)

For any questions, you can email us directly:

sales@integrated-circuit.com



NOTES:

1. MATERIAL: SEE TABLE
2. FINISHES: SEE TABLE
3. PRODUCT SPECIFICATION: NOT REQUIRED
4. PACKAGING: NOT REQUIRED
5. MATE WITH: 86 SERIES PLUGGABLE TERMINAL BLOCK
6. INCH DIMS ARE SHOWN IN BRACKETS (XXX)
7. "XX" REFERS TO THE NUMBER OF CIRCUITS
8. REFER TO SD-38120-003 FOR IMPRINTING OPTIONS (10AV AND 11AV)

PROJECT NO./NA		SHT	REV
DIMENSIONS:			
<input checked="" type="checkbox"/> mm	<input type="checkbox"/> INCH	<input type="checkbox"/> mm	<input type="checkbox"/> ONLY
<input type="checkbox"/> INCH	<input type="checkbox"/> mm		REVISE ON CAD ONLY

EC NO. ECN 3888 DWN JF 10-26-04	DESCRIPTION	QUALITY SYMBOLS	GENERAL TOLERANCES (UNLESS SPECIFIED)	SCALE 3:1	DESIGN UNITS <input type="checkbox"/> mm <input checked="" type="checkbox"/> INCH	THIRD ANGLE PROJECTION	TITLE
		MAJOR	mm INCH	DRAWN BY & DATE R. KEMP 12-5-01	CHECKED BY & DATE P. WALTZ 12-6-01	APPROVED BY & DATE L. ROTHBAUS 12-6-01	HEADER ST. CLOSED ENDS, ASSEMBLY (5.08 (1.200) CENTERS)
APPR	CRITICAL	4 PLACES	±.0015				MOLEX INCORPORATED
REV	SPC	3 PLACES	±.005				
		2 PLACES	±.01				MATERIAL NO. SEE CHART
		1 PLACE	±.02				DRAWING NO. SD-39860-003
			ANGULAR: ±2°				SHEET NO. 1 OF 2
			DRAFT WHERE APPLICABLE MUST REMAIN WITHIN DIMENSIONS				SIZE B

3	XX	HEADER PIN (-G30 OPTION)	BRASS	GOLD PLATE
2	XX	HEADER PIN (STANDARD)	BRASS	TIN PLATE
1	I	INSULATOR	NYLON	SEE CHART ON SHEET 2
ITEM	QTY.	DESCRIPTION	MATERIAL	FINISH

