

Excellent Integrated System Limited

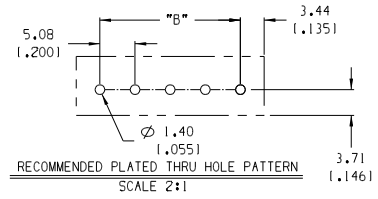
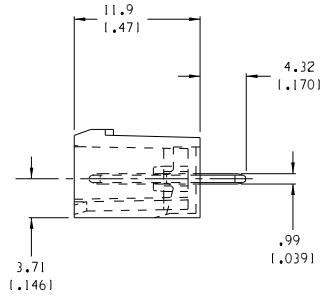
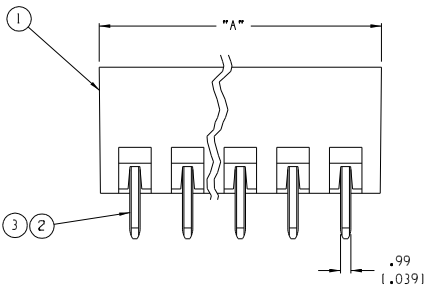
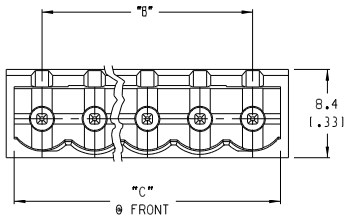
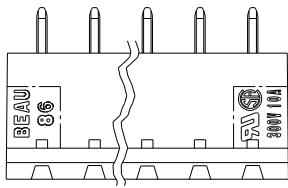
Stocking Distributor

Click to view price, real time Inventory, Delivery & Lifecycle Information:

[Molex Connector Corporation](#)
[39860-0508](#)

For any questions, you can email us directly:

sales@integrated-circuit.com



NOTES:

1. MATERIAL: SEE TABLE
2. FINISHES: SEE TABLE
3. PRODUCT SPECIFICATION: NOT REQUIRED
4. PACKAGING: NOT REQUIRED
5. MATE WITH: 86 SERIES PLUGGABLE TERMINAL BLOCK
6. INCH DIMS ARE SHOWN IN BRACKETS (XXX)
7. "XX" REFERS TO THE NUMBER OF CIRCUITS
8. REFER TO SD-38120-003 FOR IMPRINTING OPTIONS (10AV AND 11AV)

PROJECT NO./NA		SHT	REV
DIMENSIONS:			
<input checked="" type="checkbox"/> mm	<input type="checkbox"/> INCH	<input type="checkbox"/> mm	<input type="checkbox"/> ONLY
<input type="checkbox"/> INCH	<input type="checkbox"/> mm		REVISE ON CAD ONLY

EC NO. ECN 3888 DWN JF 10-26-04	DESCRIPTION	QUALITY SYMBOLS	GENERAL TOLERANCES (UNLESS SPECIFIED)		SCALE	DESIGN UNITS	THIRD ANGLE PROJECTION	TITLE	
			mm	INCH	3:1	<input type="checkbox"/> mm <input checked="" type="checkbox"/> INCH	<input type="checkbox"/> THIRD ANGLE	HEADER ST, CLOSED ENDS, ASSEMBLY (5.08 (1.200) CENTERS)	
C	REV	MAJOR	4 PLACES	± 0.015	DRAWN BY & DATE	R. KEMP 12-5-01	MOLEX INCORPORATED		
		CRITICAL	3 PLACES	± 0.005	CHECKED BY & DATE	P. WALTZ 12-6-01			
		SPECIAL	2 PLACES	± 0.01	APPROVED BY & DATE	L. ROTHBAUS 12-6-01	MATERIAL NO.	DRAWING NO.	SHEET NO.
		OTHER	1 PLACE	± 0.02	CAD FILENAME	8616XX	SEE CHART	SD-39860-003	1 OF 2
DRAFT WHERE APPLICABLE MUST REMAIN WITHIN DIMENSIONS					THIS DRAWING CONTAINS INFORMATION THAT IS PROPRIETARY TO MOLEX INCORPORATED AND SHOULD NOT BE USED WITHOUT WRITTEN PERMISSION.				

3	XX	HEADER PIN (-G30 OPTION)	BRASS	GOLD PLATE
2	XX	HEADER PIN (STANDARD)	BRASS	TIN PLATE
1	I	INSULATOR	NYLON	SEE CHART ON SHEET 2
ITEM	QTY.	DESCRIPTION	MATERIAL	FINISH

10	9	8	7	6	5	4	3	2	1	SD-39860-003																																																																																																																																																																																																																							
<table border="1"> <thead> <tr> <th>NUMBER OF CIRCUITS "XX"</th> <th>DIM. "A" ±.015</th> <th>DIM. "B"</th> <th>DIM. "C" ±.005 ±.012</th> <th>MATERIAL NO. (STANDARD) BLACK INSULATOR</th> <th>MATERIAL NO. (-630 OPTION) BLACK INSULATOR</th> <th>MATERIAL NO. (-63M OPTION) GREEN INSULATOR</th> <th>MATERIAL NO. (-10AV OPTION) BLACK INSULATOR</th> <th>MATERIAL NO. (-11AV OPTION) BLACK INSULATOR</th> </tr> </thead> <tbody> <tr><td>02</td><td>11.43 (1,450)</td><td>5.08 (1,200)</td><td>10.46 (1,412)</td><td>398600502</td><td>398610502</td><td>398603502</td><td></td><td></td></tr> <tr><td>03</td><td>16.51 (1,650)</td><td>10.16 (1,400)</td><td>15.54 (1,612)</td><td>398600503</td><td>398610503</td><td>398603503</td><td></td><td></td></tr> <tr><td>04</td><td>21.59 (1,850)</td><td>15.24 (1,600)</td><td>20.62 (1,812)</td><td>398600504</td><td>398610504</td><td>398603504</td><td></td><td></td></tr> <tr><td>05</td><td>26.67 (1,050)</td><td>20.32 (1,800)</td><td>25.70 (1,012)</td><td>398600505</td><td>398610505</td><td>398603505</td><td></td><td></td></tr> <tr><td>06</td><td>31.75 (1,250)</td><td>25.40 (1,000)</td><td>30.78 (1,212)</td><td>398600506</td><td>398610506</td><td>398603506</td><td></td><td></td></tr> <tr><td>07</td><td>37.44 (1,474)</td><td>30.48 (1,200)</td><td>35.86 (1,412)</td><td>398600507</td><td>398610507</td><td>398603507</td><td></td><td></td></tr> <tr><td>08</td><td>42.52 (1,674)</td><td>35.56 (1,400)</td><td>40.94 (1,612)</td><td>398600508</td><td>398610508</td><td>398603508</td><td></td><td>398610508</td></tr> <tr><td>09</td><td>47.60 (1,874)</td><td>40.64 (1,600)</td><td>46.02 (1,812)</td><td>398600509</td><td>398610509</td><td>398603509</td><td></td><td></td></tr> <tr><td>10</td><td>52.68 (2,074)</td><td>45.72 (1,800)</td><td>51.10 (2,012)</td><td>398600510</td><td>398610510</td><td>398603510</td><td></td><td></td></tr> <tr><td>11</td><td>57.76 (2,274)</td><td>50.80 (2,000)</td><td>56.18 (2,212)</td><td>398600511</td><td>398610511</td><td>398603511</td><td></td><td></td></tr> <tr><td>12</td><td>62.84 (2,474)</td><td>55.88 (2,200)</td><td>61.26 (2,412)</td><td>398600512</td><td>398610512</td><td>398603512</td><td></td><td></td></tr> <tr><td>13</td><td>67.92 (2,674)</td><td>60.96 (2,400)</td><td>66.34 (2,612)</td><td>398600513</td><td>398610513</td><td>398603513</td><td></td><td></td></tr> <tr><td>14</td><td>73.00 (2,874)</td><td>66.04 (2,600)</td><td>71.42 (2,812)</td><td>398600514</td><td>398610514</td><td>398603514</td><td>398620514</td><td></td></tr> <tr><td>15</td><td>78.08 (3,074)</td><td>71.12 (2,800)</td><td>76.50 (3,012)</td><td>398600515</td><td>398610515</td><td>398603515</td><td></td><td></td></tr> <tr><td>16</td><td>83.16 (3,274)</td><td>76.20 (3,000)</td><td>81.58 (3,212)</td><td>398600516</td><td>398610516</td><td>398603516</td><td></td><td></td></tr> <tr><td>17</td><td>88.24 (3,474)</td><td>81.28 (3,200)</td><td>86.66 (3,412)</td><td>398600517</td><td>398610517</td><td>398603517</td><td></td><td></td></tr> <tr><td>18</td><td>93.32 (3,674)</td><td>86.36 (3,400)</td><td>91.74 (3,612)</td><td>398600518</td><td>398610518</td><td>398603518</td><td></td><td></td></tr> <tr><td>19</td><td>98.40 (3,874)</td><td>91.44 (3,600)</td><td>96.82 (3,812)</td><td>398600519</td><td>398610519</td><td>398603519</td><td></td><td></td></tr> <tr><td>20</td><td>103.48 (4,074)</td><td>96.52 (3,800)</td><td>101.90 (4,012)</td><td>398600520</td><td>398610520</td><td>398603520</td><td>398620520</td><td></td></tr> <tr><td>21</td><td>108.56 (4,274)</td><td>101.60 (4,000)</td><td>106.98 (4,212)</td><td>398600521</td><td>398610521</td><td>398603521</td><td></td><td></td></tr> <tr><td>22</td><td>113.64 (4,474)</td><td>106.68 (4,200)</td><td>112.06 (4,412)</td><td>398600522</td><td>398610522</td><td>398603522</td><td></td><td></td></tr> <tr><td>23</td><td>118.72 (4,674)</td><td>111.76 (4,400)</td><td>117.14 (4,612)</td><td>398600523</td><td>398610523</td><td>398603523</td><td></td><td></td></tr> <tr><td>24</td><td>123.80 (4,874)</td><td>116.84 (4,600)</td><td>122.22 (4,812)</td><td>398600524</td><td>398610524</td><td>398603524</td><td></td><td></td></tr> </tbody> </table>										NUMBER OF CIRCUITS "XX"	DIM. "A" ±.015	DIM. "B"	DIM. "C" ±.005 ±.012	MATERIAL NO. (STANDARD) BLACK INSULATOR	MATERIAL NO. (-630 OPTION) BLACK INSULATOR	MATERIAL NO. (-63M OPTION) GREEN INSULATOR	MATERIAL NO. (-10AV OPTION) BLACK INSULATOR	MATERIAL NO. (-11AV OPTION) BLACK INSULATOR	02	11.43 (1,450)	5.08 (1,200)	10.46 (1,412)	398600502	398610502	398603502			03	16.51 (1,650)	10.16 (1,400)	15.54 (1,612)	398600503	398610503	398603503			04	21.59 (1,850)	15.24 (1,600)	20.62 (1,812)	398600504	398610504	398603504			05	26.67 (1,050)	20.32 (1,800)	25.70 (1,012)	398600505	398610505	398603505			06	31.75 (1,250)	25.40 (1,000)	30.78 (1,212)	398600506	398610506	398603506			07	37.44 (1,474)	30.48 (1,200)	35.86 (1,412)	398600507	398610507	398603507			08	42.52 (1,674)	35.56 (1,400)	40.94 (1,612)	398600508	398610508	398603508		398610508	09	47.60 (1,874)	40.64 (1,600)	46.02 (1,812)	398600509	398610509	398603509			10	52.68 (2,074)	45.72 (1,800)	51.10 (2,012)	398600510	398610510	398603510			11	57.76 (2,274)	50.80 (2,000)	56.18 (2,212)	398600511	398610511	398603511			12	62.84 (2,474)	55.88 (2,200)	61.26 (2,412)	398600512	398610512	398603512			13	67.92 (2,674)	60.96 (2,400)	66.34 (2,612)	398600513	398610513	398603513			14	73.00 (2,874)	66.04 (2,600)	71.42 (2,812)	398600514	398610514	398603514	398620514		15	78.08 (3,074)	71.12 (2,800)	76.50 (3,012)	398600515	398610515	398603515			16	83.16 (3,274)	76.20 (3,000)	81.58 (3,212)	398600516	398610516	398603516			17	88.24 (3,474)	81.28 (3,200)	86.66 (3,412)	398600517	398610517	398603517			18	93.32 (3,674)	86.36 (3,400)	91.74 (3,612)	398600518	398610518	398603518			19	98.40 (3,874)	91.44 (3,600)	96.82 (3,812)	398600519	398610519	398603519			20	103.48 (4,074)	96.52 (3,800)	101.90 (4,012)	398600520	398610520	398603520	398620520		21	108.56 (4,274)	101.60 (4,000)	106.98 (4,212)	398600521	398610521	398603521			22	113.64 (4,474)	106.68 (4,200)	112.06 (4,412)	398600522	398610522	398603522			23	118.72 (4,674)	111.76 (4,400)	117.14 (4,612)	398600523	398610523	398603523			24	123.80 (4,874)	116.84 (4,600)	122.22 (4,812)	398600524	398610524	398603524		
NUMBER OF CIRCUITS "XX"	DIM. "A" ±.015	DIM. "B"	DIM. "C" ±.005 ±.012	MATERIAL NO. (STANDARD) BLACK INSULATOR	MATERIAL NO. (-630 OPTION) BLACK INSULATOR	MATERIAL NO. (-63M OPTION) GREEN INSULATOR	MATERIAL NO. (-10AV OPTION) BLACK INSULATOR	MATERIAL NO. (-11AV OPTION) BLACK INSULATOR																																																																																																																																																																																																																									
02	11.43 (1,450)	5.08 (1,200)	10.46 (1,412)	398600502	398610502	398603502																																																																																																																																																																																																																											
03	16.51 (1,650)	10.16 (1,400)	15.54 (1,612)	398600503	398610503	398603503																																																																																																																																																																																																																											
04	21.59 (1,850)	15.24 (1,600)	20.62 (1,812)	398600504	398610504	398603504																																																																																																																																																																																																																											
05	26.67 (1,050)	20.32 (1,800)	25.70 (1,012)	398600505	398610505	398603505																																																																																																																																																																																																																											
06	31.75 (1,250)	25.40 (1,000)	30.78 (1,212)	398600506	398610506	398603506																																																																																																																																																																																																																											
07	37.44 (1,474)	30.48 (1,200)	35.86 (1,412)	398600507	398610507	398603507																																																																																																																																																																																																																											
08	42.52 (1,674)	35.56 (1,400)	40.94 (1,612)	398600508	398610508	398603508		398610508																																																																																																																																																																																																																									
09	47.60 (1,874)	40.64 (1,600)	46.02 (1,812)	398600509	398610509	398603509																																																																																																																																																																																																																											
10	52.68 (2,074)	45.72 (1,800)	51.10 (2,012)	398600510	398610510	398603510																																																																																																																																																																																																																											
11	57.76 (2,274)	50.80 (2,000)	56.18 (2,212)	398600511	398610511	398603511																																																																																																																																																																																																																											
12	62.84 (2,474)	55.88 (2,200)	61.26 (2,412)	398600512	398610512	398603512																																																																																																																																																																																																																											
13	67.92 (2,674)	60.96 (2,400)	66.34 (2,612)	398600513	398610513	398603513																																																																																																																																																																																																																											
14	73.00 (2,874)	66.04 (2,600)	71.42 (2,812)	398600514	398610514	398603514	398620514																																																																																																																																																																																																																										
15	78.08 (3,074)	71.12 (2,800)	76.50 (3,012)	398600515	398610515	398603515																																																																																																																																																																																																																											
16	83.16 (3,274)	76.20 (3,000)	81.58 (3,212)	398600516	398610516	398603516																																																																																																																																																																																																																											
17	88.24 (3,474)	81.28 (3,200)	86.66 (3,412)	398600517	398610517	398603517																																																																																																																																																																																																																											
18	93.32 (3,674)	86.36 (3,400)	91.74 (3,612)	398600518	398610518	398603518																																																																																																																																																																																																																											
19	98.40 (3,874)	91.44 (3,600)	96.82 (3,812)	398600519	398610519	398603519																																																																																																																																																																																																																											
20	103.48 (4,074)	96.52 (3,800)	101.90 (4,012)	398600520	398610520	398603520	398620520																																																																																																																																																																																																																										
21	108.56 (4,274)	101.60 (4,000)	106.98 (4,212)	398600521	398610521	398603521																																																																																																																																																																																																																											
22	113.64 (4,474)	106.68 (4,200)	112.06 (4,412)	398600522	398610522	398603522																																																																																																																																																																																																																											
23	118.72 (4,674)	111.76 (4,400)	117.14 (4,612)	398600523	398610523	398603523																																																																																																																																																																																																																											
24	123.80 (4,874)	116.84 (4,600)	122.22 (4,812)	398600524	398610524	398603524																																																																																																																																																																																																																											
<table border="1"> <tr> <td rowspan="2">EC NO. : DRAWN BY: CHK'D BY: APP'D BY:</td> <td rowspan="2">DESCRIPTION</td> <td rowspan="2">QUALITY SYMBOLS MAJOR CRITICAL SPEC</td> <td colspan="2">GENERAL TOLERANCES* (UNLESS SPECIFIED)</td> <td>SCALE</td> <td>DESIGN UNITS</td> <td rowspan="2">THIRD ANGLE PROJECTION</td> <td colspan="2">PROJECT NO. :</td> </tr> <tr> <td>mm</td> <td>INCH</td> <td>-</td> <td>mm <input type="checkbox"/> INCH <input checked="" type="checkbox"/></td> <td>-</td> <td>SHT</td> <td>REV</td> </tr> <tr> <td colspan="3"></td> <td>4 PLACES</td> <td>±.0015</td> <td>DRAWN BY & DATE R. KEMP 12-5-01</td> <td colspan="4">TITLE HEADER ST, CLOSED ENDS, ASSEMBLY (5.08 (1,200) CENTERS)</td> </tr> <tr> <td colspan="3"></td> <td>3 PLACES</td> <td>±.038 ±.005</td> <td>CHECKED BY & DATE P. WALTZ 12-6-01</td> <td colspan="4">MATERIAL NO. : SEE CHART</td> </tr> <tr> <td colspan="3"></td> <td>2 PLACES</td> <td>±.13 ±.01</td> <td>APPROVED BY & DATE L. ROTHBAUS 12-6-01</td> <td colspan="4">DRAWING NO. : SD-39860-003</td> </tr> <tr> <td colspan="3"></td> <td>1 PLACE</td> <td>±.3</td> <td>CAD FILENAME 8616XX</td> <td colspan="4">SHEET NO. : 2 OF 2</td> </tr> <tr> <td colspan="3"></td> <td colspan="2">ANGULAR ±.2°</td> <td colspan="5">THIS DRAWING CONTAINS INFORMATION THAT IS PROPRIETARY TO MOLEX INCORPORATED AND SHOULD NOT BE USED WITHOUT WRITTEN PERMISSION.</td> </tr> <tr> <td colspan="3"></td> <td colspan="7">DRAFT WHERE APPLICABLE MUST REMAIN WITHIN DIMENSIONS</td> <td>SIZE B</td> </tr> </table>										EC NO. : DRAWN BY: CHK'D BY: APP'D BY:	DESCRIPTION	QUALITY SYMBOLS MAJOR CRITICAL SPEC	GENERAL TOLERANCES* (UNLESS SPECIFIED)		SCALE	DESIGN UNITS	THIRD ANGLE PROJECTION	PROJECT NO. :		mm	INCH	-	mm <input type="checkbox"/> INCH <input checked="" type="checkbox"/>	-	SHT	REV				4 PLACES	±.0015	DRAWN BY & DATE R. KEMP 12-5-01	TITLE HEADER ST, CLOSED ENDS, ASSEMBLY (5.08 (1,200) CENTERS)							3 PLACES	±.038 ±.005	CHECKED BY & DATE P. WALTZ 12-6-01	MATERIAL NO. : SEE CHART							2 PLACES	±.13 ±.01	APPROVED BY & DATE L. ROTHBAUS 12-6-01	DRAWING NO. : SD-39860-003							1 PLACE	±.3	CAD FILENAME 8616XX	SHEET NO. : 2 OF 2							ANGULAR ±.2°		THIS DRAWING CONTAINS INFORMATION THAT IS PROPRIETARY TO MOLEX INCORPORATED AND SHOULD NOT BE USED WITHOUT WRITTEN PERMISSION.								DRAFT WHERE APPLICABLE MUST REMAIN WITHIN DIMENSIONS							SIZE B																																																																																																																																										
EC NO. : DRAWN BY: CHK'D BY: APP'D BY:	DESCRIPTION	QUALITY SYMBOLS MAJOR CRITICAL SPEC	GENERAL TOLERANCES* (UNLESS SPECIFIED)		SCALE	DESIGN UNITS	THIRD ANGLE PROJECTION	PROJECT NO. :																																																																																																																																																																																																																									
			mm	INCH	-	mm <input type="checkbox"/> INCH <input checked="" type="checkbox"/>		-	SHT	REV																																																																																																																																																																																																																							
			4 PLACES	±.0015	DRAWN BY & DATE R. KEMP 12-5-01	TITLE HEADER ST, CLOSED ENDS, ASSEMBLY (5.08 (1,200) CENTERS)																																																																																																																																																																																																																											
			3 PLACES	±.038 ±.005	CHECKED BY & DATE P. WALTZ 12-6-01	MATERIAL NO. : SEE CHART																																																																																																																																																																																																																											
			2 PLACES	±.13 ±.01	APPROVED BY & DATE L. ROTHBAUS 12-6-01	DRAWING NO. : SD-39860-003																																																																																																																																																																																																																											
			1 PLACE	±.3	CAD FILENAME 8616XX	SHEET NO. : 2 OF 2																																																																																																																																																																																																																											
			ANGULAR ±.2°		THIS DRAWING CONTAINS INFORMATION THAT IS PROPRIETARY TO MOLEX INCORPORATED AND SHOULD NOT BE USED WITHOUT WRITTEN PERMISSION.																																																																																																																																																																																																																												
			DRAFT WHERE APPLICABLE MUST REMAIN WITHIN DIMENSIONS							SIZE B																																																																																																																																																																																																																							