

Excellent Integrated System Limited

Stocking Distributor

Click to view price, real time Inventory, Delivery & Lifecycle Information:

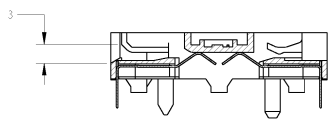
[TE Connectivity AMP Connectors](#)
[953438-1](#)

For any questions, you can email us directly:

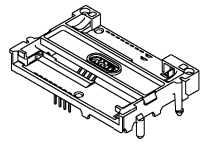
sales@integrated-circuit.com

THIS DRAWING IS THE PROPERTY OF AMP CONNECTORS LTD. IT IS LOANED TO YOUR COMPANY FOR THE EXCLUSIVE USE OF THE PROJECT SPECIFIED HEREON. IT IS NOT TO BE REPRODUCED, COPIED, EITHER WHOLLY OR IN PART, OR TRANSMITTED IN ANY FORM OR BY ANY MEANS, ELECTRONIC OR MECHANICAL, INCLUDING PHOTOCOPYING, RECORDING, OR BY ANY INFORMATION STORAGE AND RETRIEVAL SYSTEM.

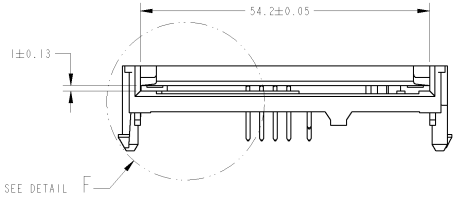
REV. NO.		DATE		DESCRIPTION		BY	CHK	APP
F	7							
E				MODIFIED PER EC ER09-1954		1108099	BD	YP
F				UPDATED		1108099	JJD	-
G				ADDED DIM. 40.2		1108099	JJD	-
H				CLARIFY, ADD NOTE 4 AND 5		1108099	FB	YP



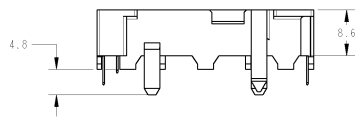
SECTION A-A



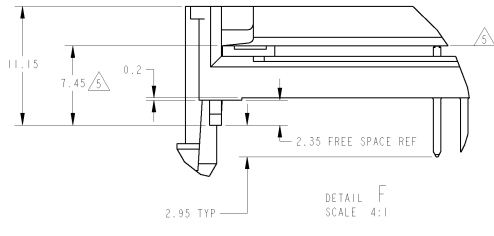
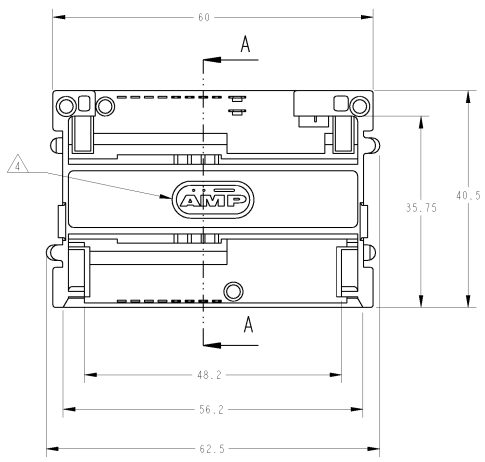
SCALE 1:1



SEE DETAIL F



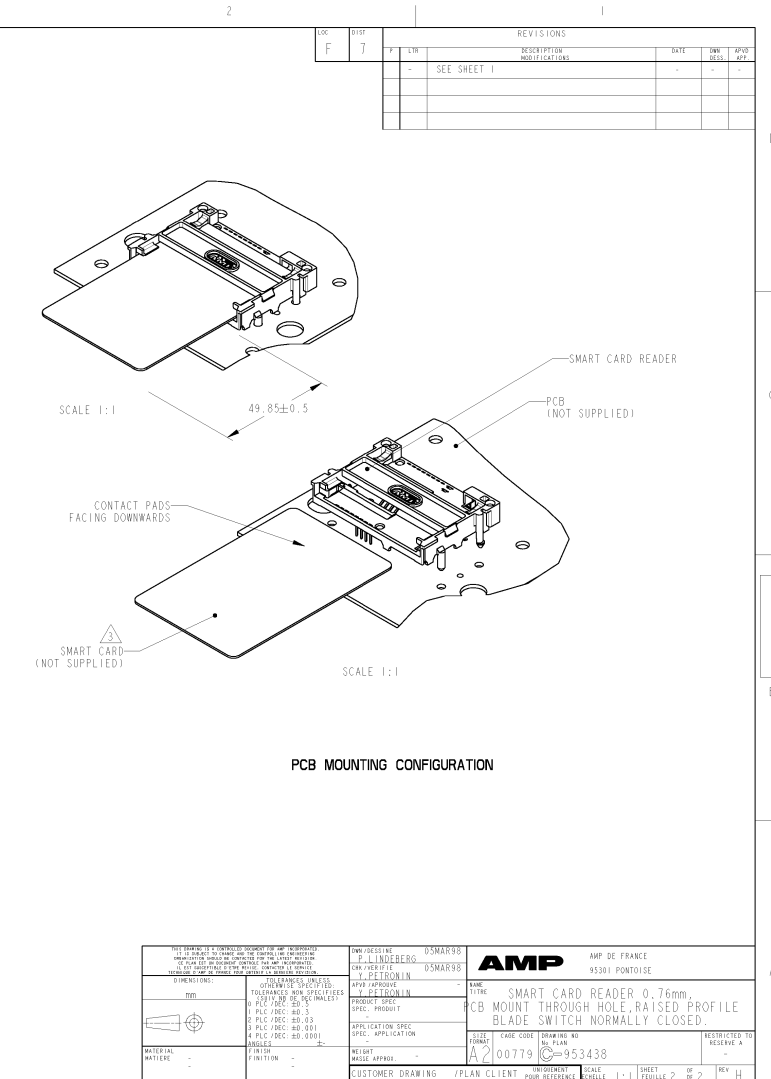
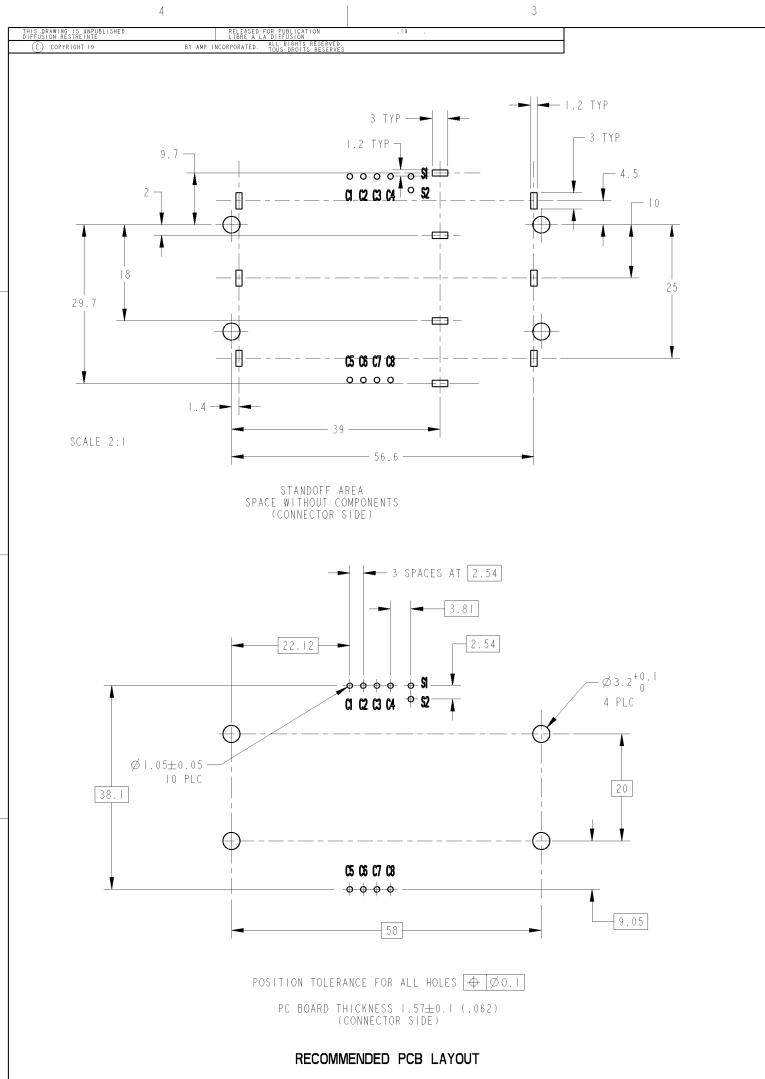
- △ SMART CARD READER : PBT G-F, BLACK UL 94V0 -
- SIGNAL AND SWITCH CONTACTS : PHOSPHOR BRONZE. -
- △ ALL CONTACTS : 0.00076 GOLD ON MATING AREAS, -
- 0.0025 TIN-LEAD ON SOLDERTAILS, -
- ALL OVER 0.001 NICKEL. -
- △ AMP SMART CARD RECEPTACLE DESIGNED TO ACCEPT -
- ISO 7810-7816 TYPE INTEGRATED CIRCUIT SMART -
- CARDS (0.76mm REF. THICKNESS) -
- SEE SHEET 2/2 -
- △ LOGO SHAPE AND POSITION VARY DEPENDING ON -
- MOLD CAVITY NUMBER. -
- △ DIMENSION APPLICABLE IN CARD CONTACT AREA ONLY. -
- SURFACE VARY DEPENDING ON MOLD CAVITY NUMBER. -



DETAIL F
SCALE 4:1

P/N : 953438-1 8 POSITIONS
150-7816

THIS DRAWING IS THE PROPERTY OF AMP CONNECTORS LTD. IT IS LOANED TO YOUR COMPANY FOR THE EXCLUSIVE USE OF THE PROJECT SPECIFIED HEREON. IT IS NOT TO BE REPRODUCED, COPIED, EITHER WHOLLY OR IN PART, OR TRANSMITTED IN ANY FORM OR BY ANY MEANS, ELECTRONIC OR MECHANICAL, INCLUDING PHOTOCOPYING, RECORDING, OR BY ANY INFORMATION STORAGE AND RETRIEVAL SYSTEM.		UNAPPROVED P. LINDBERG UNAPPROVED Y. PETRONLIN	OSMAR95 OSMAR95	AMP AMP DE FRANCE 95301 PONTOISE
DIMENSIONS: mm TOLERANCES UNLESS SPECIFIED: H / P L C / D C C ± 0.5 H / P L C / D C C ± 0.3 H / P L C / D C C ± 0.001 FINISH: RA MATERIAL: - FINISH POSITION: -	UNAPPROVED Y. PETRONLIN SPEC. PRODUCT: 100-15102 SPEC. APPLICATION: - WEIGHT APPROX: 9 g FINISH POSITION: -	NAME: SMART CARD READER 0.76mm, CB MOUNT THROUGH HOLE, RAISED PROFILE BLADE SWITCH NORMALLY CLOSED. TITLE: - CASE CODE: 00779 DRAWING NO: 953438	RESTRICTED TO RESERVE A SHEET 1 OF 2 REV H	CUSTOMER DRAWING / PLAN CLIENT SCALE: 1:1 SHEET: 1 OF 2 REV: H



REV	DATE	DESCRIPTION	BY	CHKD	APPD
F	7	SEE SHEET 1			

<small>THIS DRAWING IS A TECHNICAL DOCUMENT OF AMP CONNECTORS IT IS SUBJECT TO CHANGE AND THE CUSTOMER IS RESPONSIBLE FOR THE VALIDITY OF THE DRAWING IT IS THE CUSTOMER'S RESPONSIBILITY TO VERIFY THE DIMENSIONS AND TOLERANCES OF THE PARTS BEFORE USING THEM IN HIS OWN DESIGN. THE CUSTOMER IS RESPONSIBLE FOR THE VALIDITY OF THE DRAWING AND FOR THE RESULTS OF HIS OWN DESIGN. THE CUSTOMER IS RESPONSIBLE FOR THE VALIDITY OF THE DRAWING AND FOR THE RESULTS OF HIS OWN DESIGN.</small>		INVENTOR P. LINDBERG DESIGNER Y. PETRONLIN	DRAWING NO 00779 DRAWING NO 953438
TOLERANCES UNLESS SPECIFIED: H / HOLE: ±0.1 F / HOLE: ±0.05 G / HOLE: ±0.03 M / HOLE: ±0.001		AMP APPROVED Y. PETRONLIN PRODUCT SPEC. APPLICATION SPEC. SPEC. APPLICATION SPEC.	AMP DE FRANCE 95301 PONTROISE
FINISH NONE		WEIGHT NONE APPROX.	CUSTOMER DRAWING / PLAN CLIENT FROM REFERENCE