

Excellent Integrated System Limited

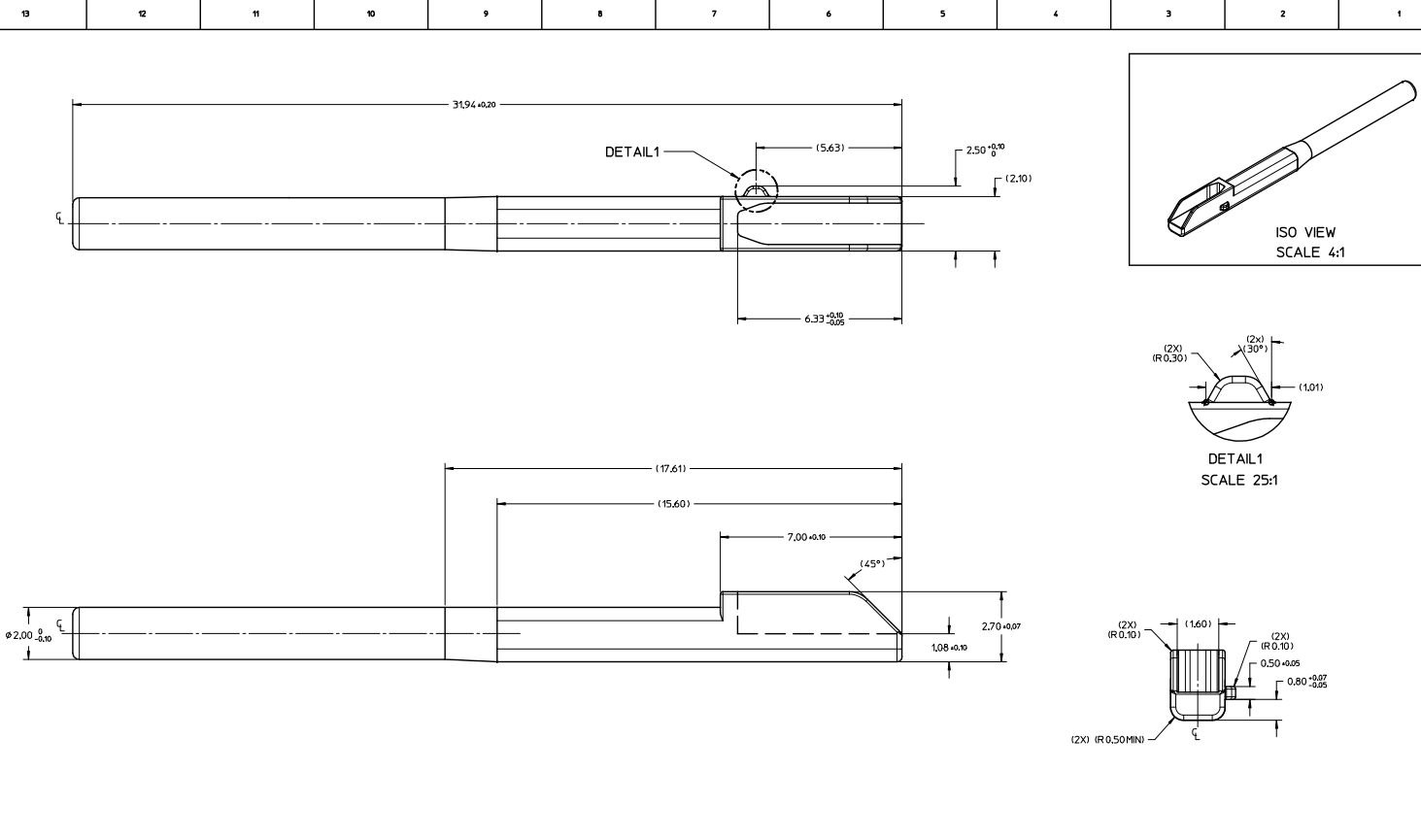
Stocking Distributor

Click to view price, real time Inventory, Delivery & Lifecycle Information:

[Molex Connector Corporation](#)
[0368040001](#)

For any questions, you can email us directly:

sales@integrated-circuit.com



- NOTES:
1. MATERIAL: PA66 GF 30%
 2. ALLOWABLE FLASH 0.08 UNLESS OTHERWISE SPECIFIED.
 3. PACKAGING AS PER PK-36804-001
 4. USE WITH 36792/36807 SERIES

PART# REPLACEMENT EC NO: 2015-0163 DRAWN: VITTHAR CHKD: APPR: PRASAD REV:	DESCRIPTION 2015/09/25 2015/09/25	QUALITY SYMBOLS 	GENERAL TOLERANCES (UNLESS SPECIFIED)		DIMENSION STYLE		SCALE	DESIGN UNITS	THIRD ANGLE PROJECTION		
			mm	INCH	MM ONLY	METRIC	10:1				
			4 PLACES ± --- ± ---	3 PLACES ± --- ± ---	DRAWN BY	DATE	TITLE				
			2 PLACES ± 0.13 ± ---	1 PLACE ± 0.25 ± ---	0 PLACE ± --- ± ---	MRAMAKRISHNA	2012/07/05	MX 120G CAVITY PLUG FOR RECEPTACLE			
ANGULAR ± --- ° DRAFT WHERE APPLICABLE MUST REMAIN WITHIN DIMENSIONS			APPROVED BY		DATE	MATERIAL NO.		DOCUMENT NO.	SHEET NO.		
			KPRASAD		2013/09/30	368040001		SD-36804-001	1 OF 1		
THIS DRAWING CONTAINS INFORMATION THAT IS PROPRIETARY TO MOLEX INCORPORATED AND SHOULD NOT BE USED WITHOUT WRITTEN PERMISSION											