

Excellent Integrated System Limited

Stocking Distributor

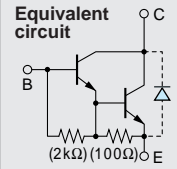
Click to view price, real time Inventory, Delivery & Lifecycle Information:

[Sanken](#)
[2SD2083](#)

For any questions, you can email us directly:

sales@integrated-circuit.com

Darlington 2SD2083



Silicon NPN Triple Diffused Planar Transistor (Complement to type 2SB1383)

Application : Driver for Solenoid, Motor and General Purpose

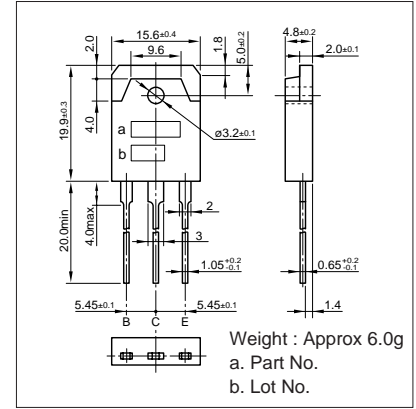
Absolute maximum ratings (Ta=25°C)

Symbol	Ratings	Unit
V _{CB0}	120	V
V _{CE0}	120	V
V _{EB0}	6	V
I _C	25(Pulse40)	A
I _B	2	A
P _C	120(T _C =25°C)	W
T _j	150	°C
T _{stg}	-55 to +150	°C

Electrical Characteristics (Ta=25°C)

Symbol	Conditions	Ratings	Unit
I _{CB0}	V _{CB} =120V	10max	μA
I _{EB0}	V _{EB} =6V	10max	mA
V _{(BR)CEO}	I _C =25mA	120min	V
h _{FE}	V _{CE} =4V, I _C =12A	2000min	
V _{CE(sat)}	I _C =12A, I _B =24mA	1.8max	V
V _{BE(sat)}	I _C =12A, I _B =24mA	2.5max	V
f _T	V _{CE} =12V, I _E =-1A	20typ	MHz
C _{OB}	V _{CB} =10V, f=1MHz	340typ	pF

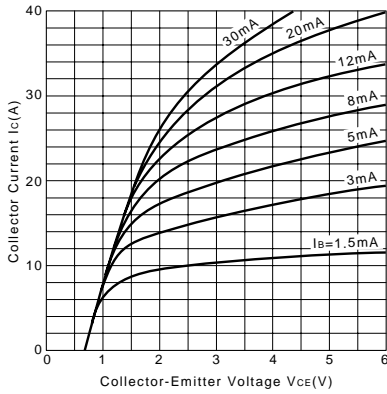
External Dimensions MT-100(TO3P)



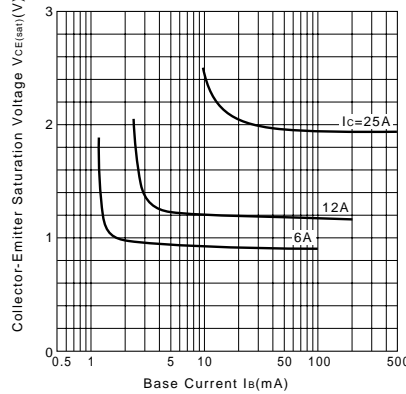
Typical Switching Characteristics (Common Emitter)

V _{CC} (V)	R _L (Ω)	I _C (A)	V _{BB1} (V)	V _{BB2} (V)	I _{B1} (mA)	I _{B2} (mA)	t _{on} (μs)	t _{stg} (μs)	t _f (μs)
24	2	12	10	-5	24	-24	1.0typ	6.0typ	1.0typ

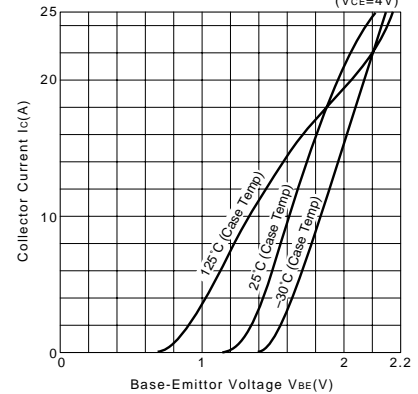
I_C-V_{CE} Characteristics (Typical)



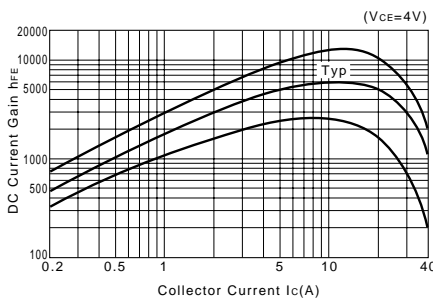
V_{CE(sat)}-I_B Characteristics (Typical)



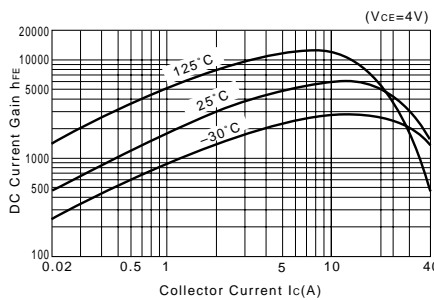
I_C-V_{BE} Temperature Characteristics (Typical)



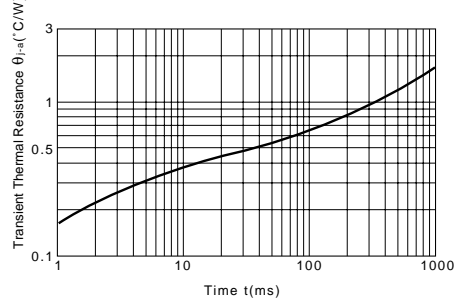
h_{FE}-I_C Characteristics (Typical)



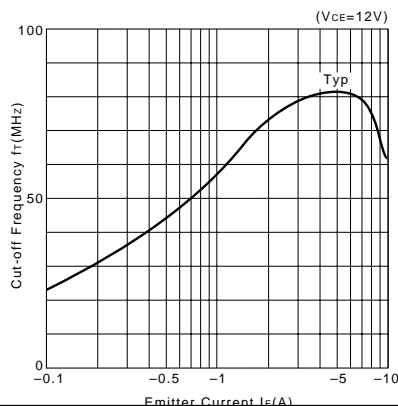
h_{FE}-I_C Temperature Characteristics (Typical)



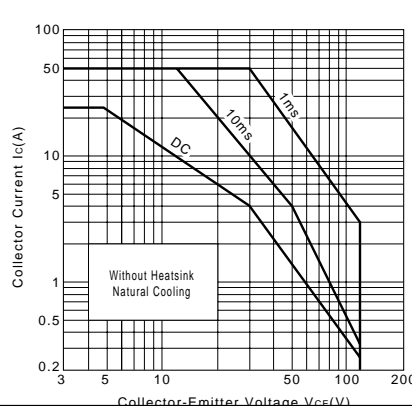
θ_{J-a-t} Characteristics



f_T-I_E Characteristics (Typical)



Safe Operating Area (Single Pulse)



P_C-T_a Derating

