

Excellent Integrated System Limited

Stocking Distributor

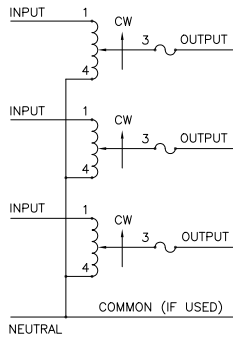
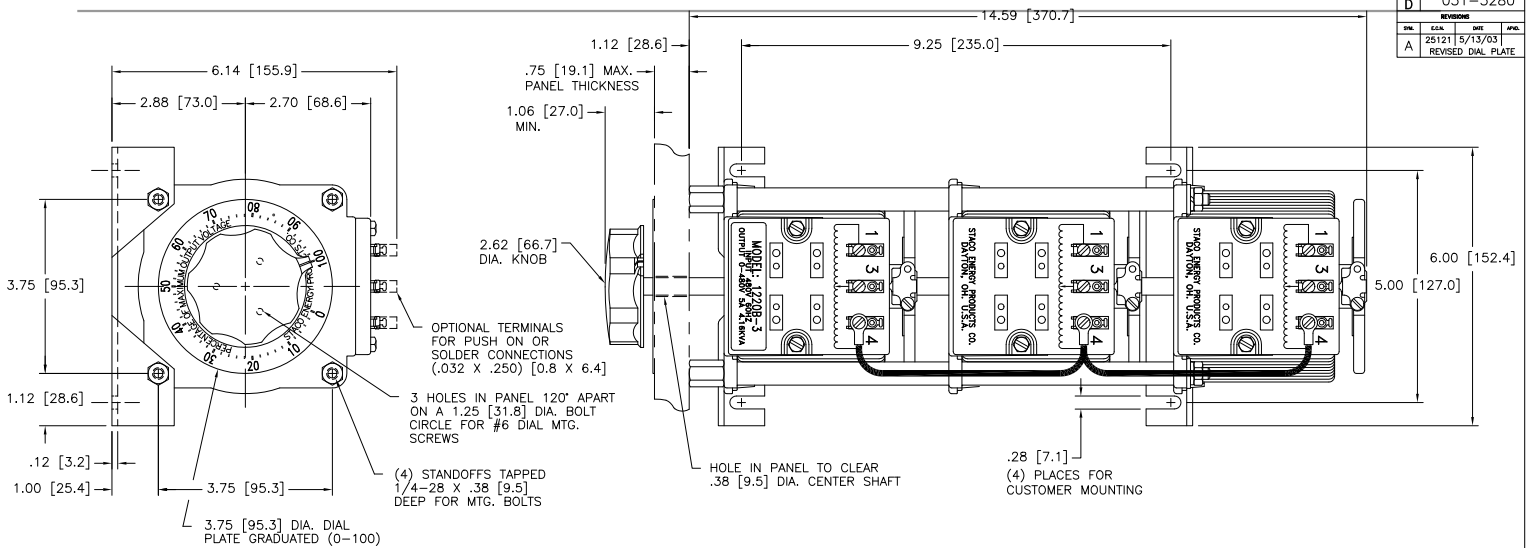
Click to view price, real time Inventory, Delivery & Lifecycle Information:

[Staco Energy Products Co.](#)
[1220B-3](#)

For any questions, you can email us directly:

sales@integrated-circuit.com

REV. NO.	031-3280		
REV.	DATE	BY	APP.
A	25/121 5/13/03		
REVISED DIAL PLATE			



FUSE RECOMMENDED BUT NOT SUPPLIED

- ⌘ IF GANGED UNITS ARE USED IN A SYSTEM THAT ORDINARILY HAS A COMMON NEUTRAL OR GROUND BETWEEN SOURCE AND LOAD, THE NEUTRAL OR GROUND MUST BE CONNECTED TO THE COMMON TERMINALS OF THE VARIABLE TRANSFORMER ASSEMBLY. IF THE SYSTEM HAS NO NEUTRAL, THE LOAD MUST BE BALANCED OR THE TRANSFORMERS WILL BE DAMAGED.
- JUMPER PROVIDED IN STANDARD COMMON POSITION AND SHOULD BE MOVED OR REMOVED AS REQUIRED.
- ++ LINE TO LINE VOLTAGE.

WIRING	SPECIFICATIONS						SHAFT ROTATION TO INCREASE VOLTAGE	TERMINAL CONNECTIONS			
	INPUT		OUTPUT					FOR INCREASING VOLTAGE AS VIEWED FROM BASE END ■			
	VOLTS	HERTZ	VOLTS	CONSTANT CURRENT LOAD	CONSTANT IMPEDANCE LOAD	INPUT		JUMPER	OUTPUT		
THREE PHASE WYE ⌘	480	60	0-480	5.0	4.16	7.0	5.82	CW	1-1-1	4-4-4	3-3-3
								CCW	4-4-4	1-1-1	3-3-3

STACO ENERGY PRODUCTS CO. 1220B-3
DESIGNED BY S.A. SMITH 9/26/97
DATE 9/26/97
REV. NO. 031-3280
REV. DATE 5/13/03
REV. BY
REV. DATE
REV. BY
REV. DATE
REV. BY
REV. DATE



031-3280