

Excellent Integrated System Limited

Stocking Distributor

Click to view price, real time Inventory, Delivery & Lifecycle Information:

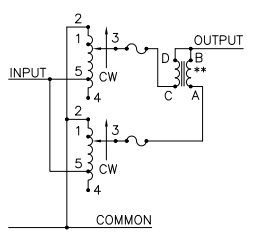
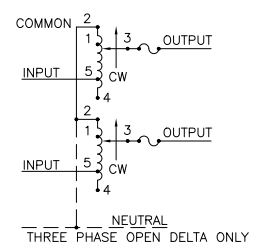
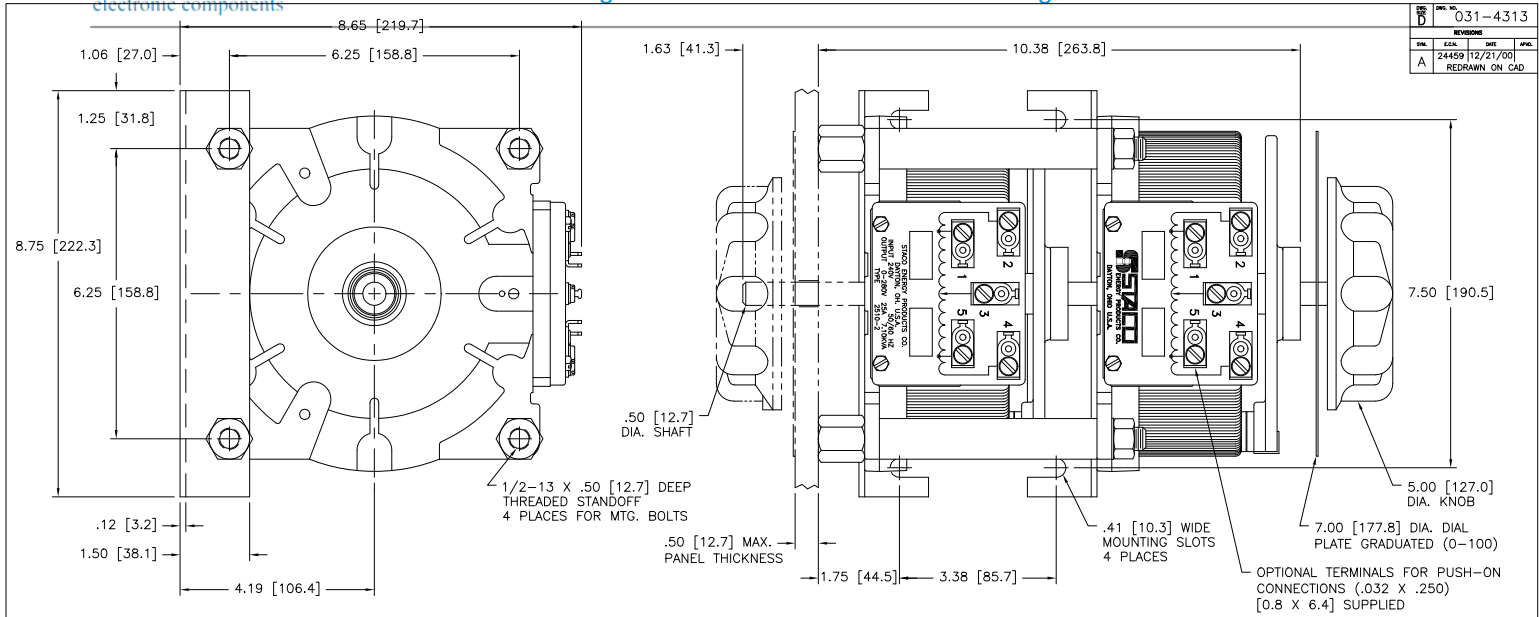
[Staco Energy Products Co.](#)
[2510-2](#)

For any questions, you can email us directly:

sales@integrated-circuit.com

REV.	DATE	BY	CHKD.	APP.
A	24459 12/21/00			

031-4313
REVISIONS
REDRAWN ON CAD



SCHEMATIC THREE PHASE OPEN DELTA AND SINGLE PHASE SERIES. FUSE RECOMMENDED BUT NOT SUPPLIED.

SCHEMATIC SINGLE PHASE PARALLEL FUSE RECOMMENDED BUT NOT SUPPLIED.

++ LINE TO LINE VOLTAGE.
** REQUIRES ONE 51LAC PARALLELING CHOKE (NOT SUPPLIED).
⌈ IF GANGED UNITS ARE USED IN A SYSTEM THAT ORDINARILY HAS A COMMON NEUTRAL OR GROUND BETWEEN SOURCE AND LOAD, THE NEUTRAL OR GROUND MUST BE CONNECTED TO THE COMMON TERMINALS OF THE VARIABLE TRANSFORMER ASSEMBLY. IF THE SYSTEM HAS NO NEUTRAL, THE LOAD MUST BE BALANCED OR THE TRANSFORMER WILL BE DAMAGED.
■ JUMPER PROVIDED IN STANDARD COMMON POSITION AND SHOULD BE REMOVED OR REMOVED AS REQUIRED.

WIRING	INPUT		OUTPUT				SHAFT ROTATION TO INCREASE VOLTAGE	TERMINAL CONNECTIONS FOR INCREASING VOLTAGE AS VIEWED FROM BASE END ■		
	VOLTS	HERTZ	CONSTANT CURRENT LOAD		CONSTANT IMPEDANCE LOAD			INPUT	JUMPER	OUTPUT
			MAX. AMPS	MAX. KVA	MAX. AMPS	MAX. KVA				
SINGLE PHASE PARALLEL **	120	50/60	0-120	50	6.00	60	7.2	CW	2-2,4-4	4-B
			0-140	50	7.00	—	—	CCW	2-2,4-4	2-B
SINGLE PHASE SERIES	240	50/60	0-240	25	6.00	30	7.2	CW	2-2	4-4 3-3
			0-280	25	7.00	—	—	CCW	4-4 2-2 3-3	1-1 4-4 3-3
THREE PHASE OPEN DELTA ⌈	120	50/60	0-120	25	5.20	30	6.20	CW	4-2,4-2	2-2 3-2-3
			0-140	25	6.06	—	—	CCW	1-4,1-4	4-4 3-4-3
			0-140	25	6.06	—	—	CCW	5-2,5-2	2-2 3-2-3

THE SPEC. CONTROL DRAWING VARIABLE TRANSFORMER MODEL: 2510-2

DATE: 12/21/00
BY: S.A. SMITH
CHKD: S.F. TBS
APP: S.F. TBS
SCALE: 1/1

031-4313