

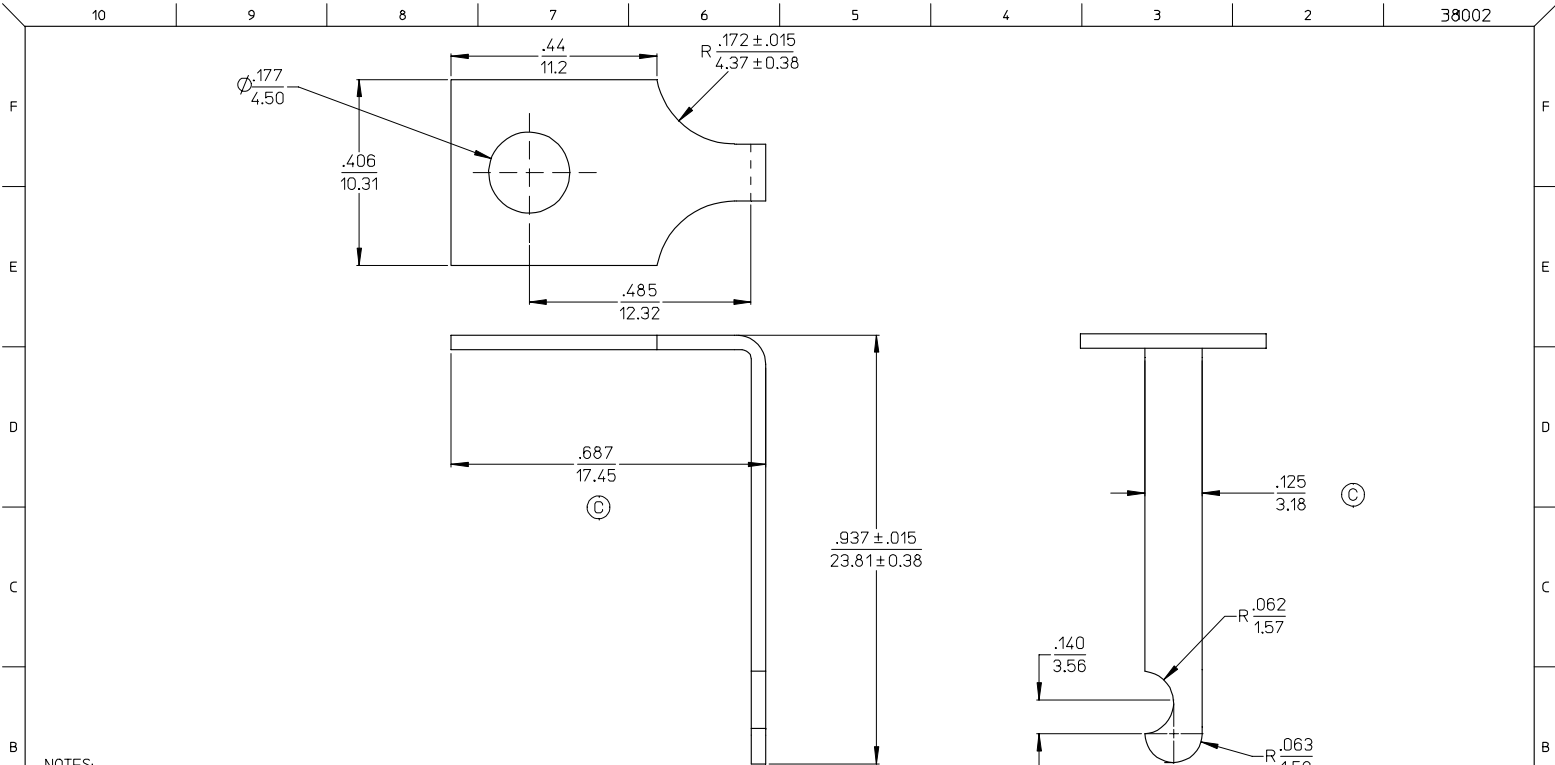
Excellent Integrated System Limited

Stocking Distributor

Click to view price, real time Inventory, Delivery & Lifecycle Information:

[Molex Connector Corporation](#)
[38002-0325](#)

For any questions, you can email us directly:
sales@integrated-circuit.com



NOTES:

1. MATERIAL: BRASS
2. FINISHES: SEE TABLE
3. USED WITH: 2100 & 2200 SERIES TERMINAL STRIPS.
4. PART IS RoHS COMPLIANT

ITEM	QTY.	DESCRIPTION	MATERIAL NO.	ENGINEERING NO.	FINISH
1	1	TERMINAL	38002-0325	2104-0401-A260	TIN
1	1	TERMINAL	38002-0324	2104-0401-A110	PLAIN

CHANGED DIMENSION EC NO.: ETC2007-0187 DRAWN: J. MASTRO 2006/11/29 CHECK: J. MACNEIL 2006/11/29 APPR: J. MACNEIL 2006/11/29	QUALITY SYMBOLS ▽=0 ▽=0	GENERAL TOLERANCES (UNLESS SPECIFIED)		DIMENSION STYLE	SCALE	DESIGN UNITS	THIRD ANGLE PROJECTION	
				IN/MM	5:1	INCH		
		4 PLACES	± .0015	INCH				
		3 PLACES	± 0.038	± .005				
DRAWN BY		DATE		DRAWN BY		DATE		
HCH		69/08/20		CHECKED BY		DATE		
RNEFF		69/08/20		APPROVED BY		DATE		
RNEFF		69/08/20		MATERIAL NO.		DOCUMENT NO.		
RNEFF		69/08/20		SEE CHART		SD-38002-022		
RNEFF		69/08/20		SIZE B		THIS DRAWING CONTAINS INFORMATION THAT IS PROPRIETARY TO MOLEX INCORPORATED AND SHOULD NOT BE USED WITHOUT WRITTEN PERMISSION		