

Excellent Integrated System Limited

Stocking Distributor

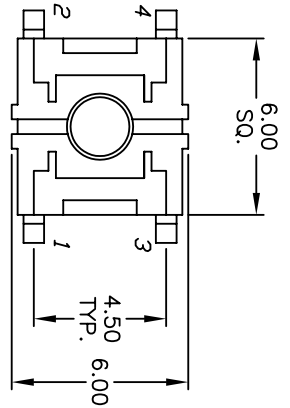
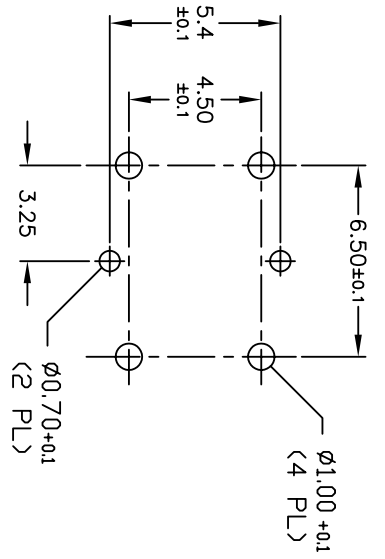
Click to view price, real time Inventory, Delivery & Lifecycle Information:

[E-Switch](#)
[TL1240RQ](#)

For any questions, you can email us directly:

sales@integrated-circuit.com

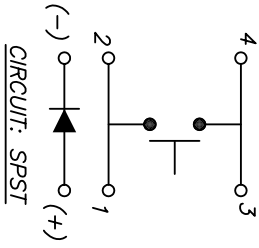
SHEET OF



L.E.D INFO: RED

| PARAMETERS | SYMBOL | MAX. | TYP. | UNITS |
|---------------------------|-------------|------|------|---------|
| POWER DISSIPATION | P_d | 70 | - | mW |
| AVE FORWARD CURRENT | I_f | 30 | - | mA |
| REVERSE VOLTAGE | V_r | 4 | - | V |
| FORWARD VOLTAGE | V_f | 2.3 | - | V |
| PEAK EMISSION WAVELENGTH | λ_d | - | 660 | nm |
| REVERSE CURRENT | I_r | 10 | - | μA |
| LUMINOUS INTENSITY @ 20mA | I_v | - | 25 | mcd |

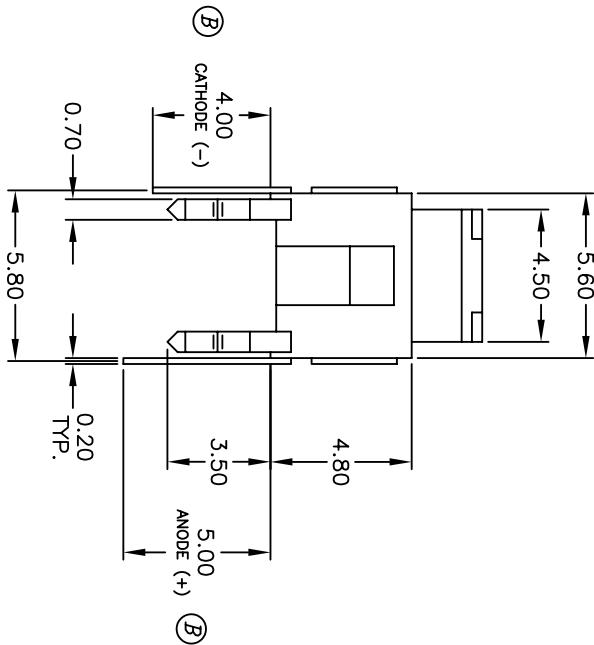
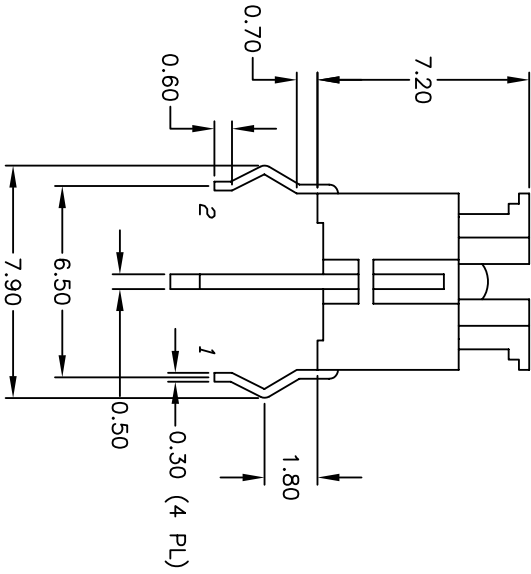
RECOMMENDED P.C.B. LAYOUT



CONTACT CONFIGURATION

NOTES:

1. ALL DIMENSIONS IN MM
2. GENERAL TOLERANCE: X.X=±0.4
X.XX=±0.25
3. RATING: 50mA, 12VDC
4. TRAVEL: 0.25 +0.2/0.1mm
5. OPERATING FORCE: 160±50gf
6. CONTACT RESISTANCE: 100mΩ-Ohms Max
7. 2002/95/EC (ROHS) COMPLIANT



| REV. | ECN No. | DESCRIPTION | DATE | CHKD |
|------|---------|-------------------------------|---------|------|
| E | 15286 | DIM TD 5.4 FROM 5.6 ON P.C.B. | 9/14/05 | PH |
| D | 15281 | REV. DESCRIPTION, ROHS NOTE | 9/14/05 | PH |
| C | 13388 | REVISED SPECS | 8/21/03 | AR |
| B | 11324 | REVISED SPECS | 7/20/01 | CJB |

| TITLE | | SCALE | DATE | DR | DWG | REV |
|-----------|--|-------|---------|-----|---------|-----|
| E-SWITCH® | | 4:1 | 3/22/01 | CJB | P010361 | E |
| TL1240RQ | | | | | | |

THE INFORMATION CONTAINED IN THIS DOCUMENT IS PROPRIETARY TO E-SWITCH AND IS NOT TO BE COPIED OR TRANSFERRED