

## Excellent Integrated System Limited

Stocking Distributor

Click to view price, real time Inventory, Delivery & Lifecycle Information:

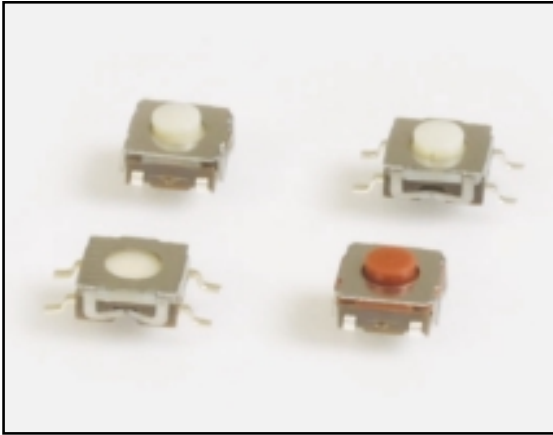
[E-Switch](#)  
[TL3304AF160QG](#)

For any questions, you can email us directly:

[sales@integrated-circuit.com](mailto:sales@integrated-circuit.com)

**SERIES TL SWITCHES**

**SURFACE MOUNT TACT SWITCHES**



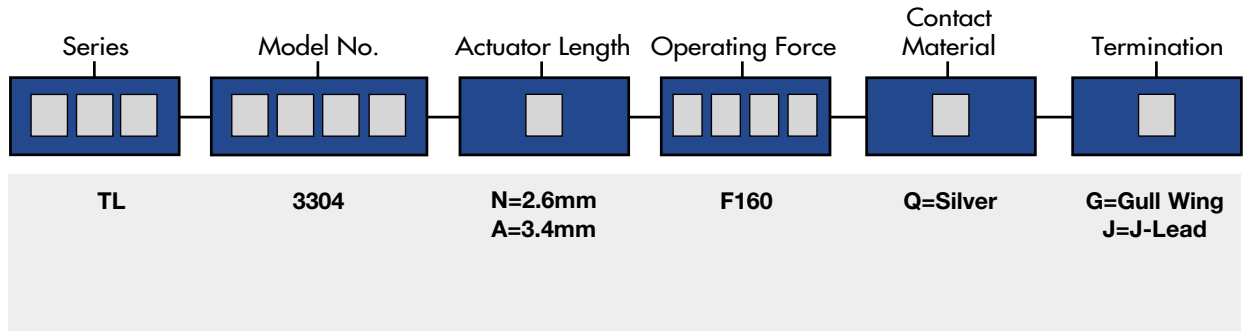
**SPECIFICATIONS**

Rating:	50mA @ 50 VDC
Mechanical Life:	100,000 cycles typical
Contact Resistance:	20mΩ max. initial @ 2-4 VDC, 100mA
Insulation Resistance:	100MΩ min.
Dielectric Strength:	1,000 Vrms at sea level
Operating Force:	160 ± 50 gf

**MATERIALS**

Housing:	Polyphenylene Sulfide (PPS)
Actuator:	Rubber
Cover:	Stainless steel
Contacts:	Silver-clad phosphor bronze
Terminals:	Silver-clad brass

**HOW TO ORDER**



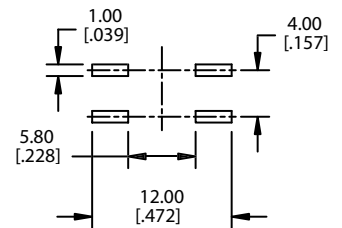
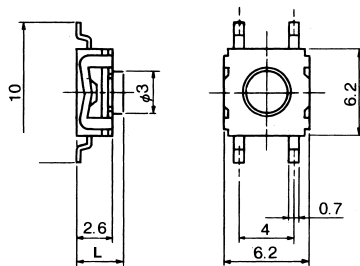
**EXAMPLE**



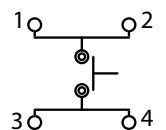
SPECIFICATIONS SUBJECT TO CHANGE WITHOUT NOTICE.

**Gull Wing Termination**

**P.C. MOUNTING**



**Schematic**

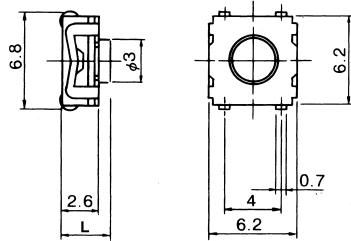


**SERIES TL SWITCHES**

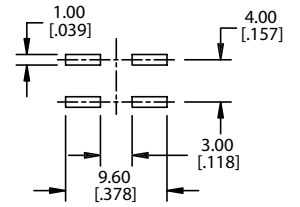
**SURFACE MOUNT TACT SWITCHES**



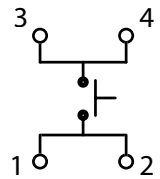
**J-Lead Termination**



**P.C. MOUNTING**



**Schematic**



**ACTUATOR OPTIONS**

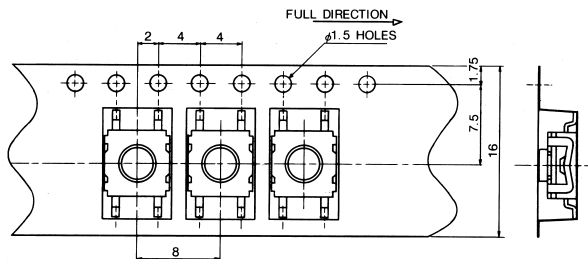
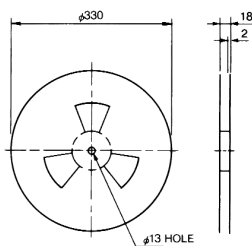
Actuator Length (L)
N = 2.6 mm
A = 3.4 mm

**TERMINATION**

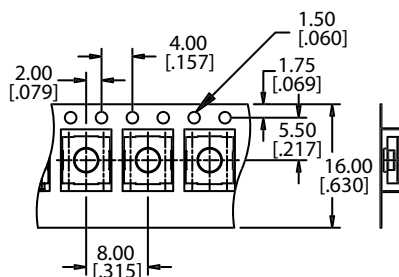
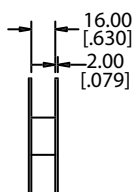
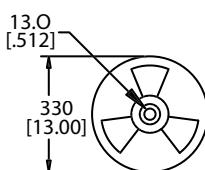
Termination
G = Gull Lead
J = J-Lead

**STANDARD REELS**

**Gull Wing**



**J-Lead**



SPECIFICATIONS SUBJECT TO CHANGE WITHOUT NOTICE.