

## Excellent Integrated System Limited

Stocking Distributor

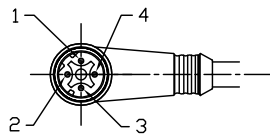
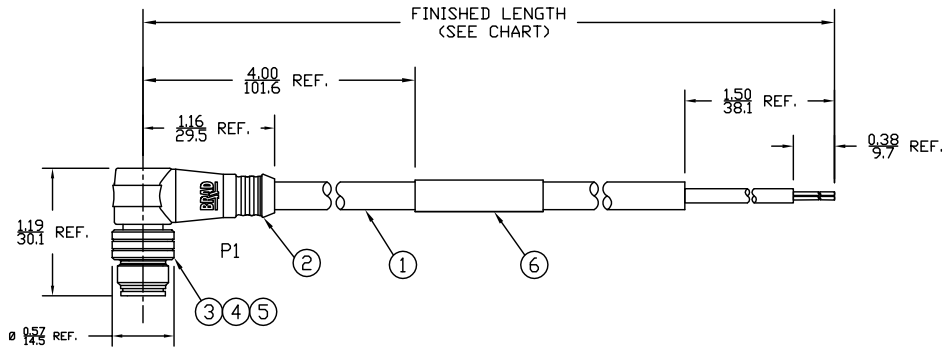
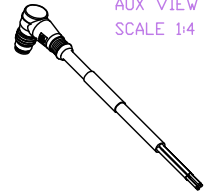
Click to view price, real time Inventory, Delivery & Lifecycle Information:

[Molex Connector Corporation](#)  
[1300480072](#)

For any questions, you can email us directly:

[sales@integrated-circuit.com](mailto:sales@integrated-circuit.com)

PART NUMBER	ENGINEERING NO.	LENGTH ± TOLERANCE
1300480070	E10A00710M010	3' 3" +2.19"/-0" [ 1M +55.6/-0 mm ]
1300480072	E10A00710M050	16' 4" +6.5"/-0" [ 5M +165.0/-0 mm ]



P1	
1	YELLOW
2	WHITE
3	ORANGE
4	BLUE

WIRING DIAGRAM

NOTES:

- MATERIAL: SEE TABLE
- FINISHES: SEE TABLE
- CABLE: #22/4 SHIELDED PUR
- ELECTRICAL DATA:  
ACCORDING TO CAT5e ETHERNET STANDARD  
MAX. VOLTAGE: 30V  
MAX. CURRENT: 1.5A
- ENVIRONMENTAL:  
PROTECTION IP67  
TEMPERATURE RANGE: -20°C TO 75°C
- WRAP LABEL IS MARKED WITH P/N, DATE CODE,  
VOLTAGE & AMPERAGE.
- ASSEMBLY IS RoHS COMPLIANT.

ITEM	QTY.	DESCRIPTION	MATERIAL	FINISH
6	1	LABEL	PLASTIC FILM	BLACK/YELLOW
5	1	INSERT	PUR	BLACK
4	4	PIN CONTACT	COPPER ALLOY	GOLD PLATED
3	1	M12 COUPLING NUT	BRASS	NICKEL
2	1	OVERMOLD	PUR	BLACK
1	1	ETHERNET CABLE-CAT5E	PUR JACKET	TEAL

SD RELEASE EC NO: WEL2010-0005 DRWIN: YOU CHKD: BWOODMAN APPR: JFJURPHY 2009/07/20 DESCRIPTION:	QUALITY SYMBOLS ▽=0 ▽C=0	GENERAL TOLERANCES (UNLESS SPECIFIED) mm INCH 4 PLACES ±---- ±---- 3 PLACES ±---- ±.005 2 PLACES ±---- ±.010 1 PLACE ±---- ±.020 ANGULAR ±1/2°	DIMENSION STYLE IN/MM DRAWN BY DATE VOU 2009/07/06 CHECKED BY DATE BWOODMAN 2009/07/31 APPROVED BY DATE	SCALE 3:4 DESIGN UNITS INCH THIRD ANGLE PROJECTION	TITLE MICRO-CHANGE CABLE ASSY 4P M/MP 90 D-CODE #22/4 SHIELDED PUR	
	DRAFT WHERE APPLICABLE MUST REMAIN WITHIN DIMENSIONS		MATERIAL NO. SEE CHART	DOCUMENT NO. SD-120108-017	SHEET NO. 1 OF 1	
	SIZE A		THIS DRAWING CONTAINS INFORMATION THAT IS PROPRIETARY TO MOLEX INCORPORATED AND SHOULD NOT BE USED WITHOUT WRITTEN PERMISSION			
	Molex INCORPORATED					

6

5

4

3

2

1