

## Excellent Integrated System Limited

Stocking Distributor

Click to view price, real time Inventory, Delivery & Lifecycle Information:

[Bel Fuse Inc.](#)  
[ATT-0106-10-QMA-32](#)

For any questions, you can email us directly:  
[sales@integrated-circuit.com](mailto:sales@integrated-circuit.com)

4

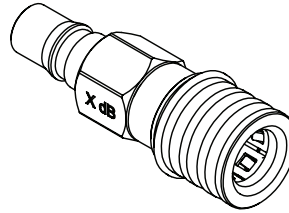
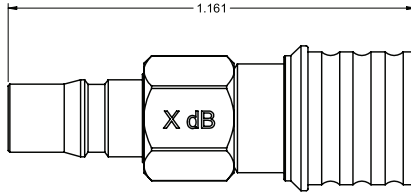
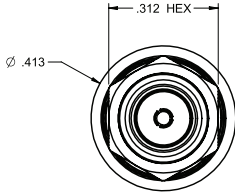
3

2

1

PART NUMBER	ATTENUATION "X" dB
ATT-0106-01-QMA-32	1
ATT-0106-02-QMA-32	2
ATT-0106-03-QMA-32	3
ATT-0106-06-QMA-32	6
ATT-0106-10-QMA-32	10

DRAWING NO. ATT-0106-XX-QMA-32	
<b>REVISIONS</b>	
1	RELEASE
1-30-2011	R S Y L M



**SPECIFICATION:**

1. ELECTRICAL RATING  
 IMPEDANCE: 50 OHMS  
 FREQUENCY RANGE: 0-6 GHz  
 ATTENUATION ACCURACY:

dB	DC-4 GHz	DC-4 GHz
1-3	±0.3	±0.5
4-6	±0.4	±0.5
7-10	±0.5	±0.5

**VSWR MAX.**

dB	DC-2.5 GHz	2.5-4 GHz	4-6 GHz
1-3	1.15:1	1.20:1	1.25:1
4-6	1.15:1	1.20:1	1.25:1
7-10	1.15:1	1.25:1	1.30:1

AVERAGE INPUT POWER: 2W MAX AT +25 CELSIUS DEGREE, DERATED LINEARLY TO 0.5W MAX AT +125 CELSIUS DEGREE.

2. MECHANICAL RATING

ENGAGEMENT FORCE: 8.0 LBS MAX.  
 DISENGAGEMENT FORCE: 2.5 LBS MIN.  
 COUPLING MECHANISM RETENTION FORCE: 13.5 LBS MIN.  
 CONNECTOR DURABILITY: 500 CYCLES MIN.

3. ENVIRONMENTAL RATING

TEMPERATURE RANGE: -55 TO 125 CELSIUS DEGREE  
 SHOCK: MIL-STD-202, METHOD 213, CONDITION I.  
 THERMAL SHOCK: MIL-STD-202, METHOD 107, CONDITION B.  
 VIBRATION: MIL-STD-202, METHOD 204, CONDITION D.

4. MATERIAL AND FINISH

BODY/INUT: BRASS, TRI-ALLOY PLATED.  
 COUPLING SPRING: BERYLLIUM COPPER, TRI-ALLOY PLATED.  
 FEMALE CONTACT: BERYLLIUM COPPER, GOLD PLATED.  
 MALE CONTACT: BRASS, GOLD PLATED.  
 INSULATOR: TEFLON.

THIS DRAWING TO BE INTERPRETED  
 PER ANSI Y 14.5M - 1994

**COMPANY CONFIDENTIAL**

TOLERANCE UNLESS OTHERWISE SPECIFIED		DRAWN BY R.SHEN	DATE 1-28-2011
DECIMALS	INCH	CHECKED BY B.YU	DATE 1-28-2011
X.X	± 0.010	APPROVED BY	DATE 1-30-2011
X.XX	± 0.005	L.M.A	
X.XXX	± 0.003	U/M	INCH
ANGLES	± 0.5°		

TITLE  
**QMA 6 GHZ ATTENUATOR,PLUG TO JACK,HEX BODY**

THIS DRAWING WAS PRODUCED BY COMPUTER.  
 DO NOT SCALE DRAWING OR UPDATE MANUALLY.

SHEET 1 OF 1	DRAWING NO. ATT-0106-XX-QMA-32	SIZE C
-----------------	-----------------------------------	-----------

5

4

3

2

1

±