

Excellent Integrated System Limited

Stocking Distributor

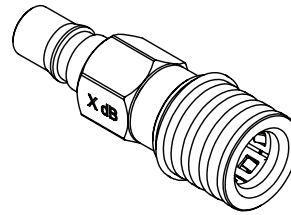
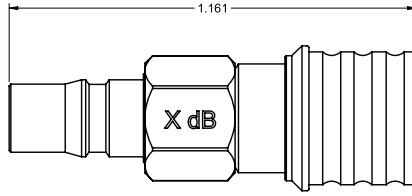
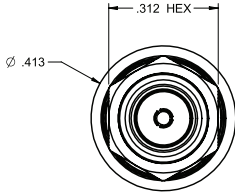
Click to view price, real time Inventory, Delivery & Lifecycle Information:

[Bel Fuse Inc.](#)
[ATT-0106-01-QMA-32](#)

For any questions, you can email us directly:
sales@integrated-circuit.com

PART NUMBER	ATTENUATION "X" dB
ATT-0106-01-QMA-32	1
ATT-0106-02-QMA-32	2
ATT-0106-03-QMA-32	3
ATT-0106-06-QMA-32	6
ATT-0106-10-QMA-32	10

DRAWING NO. ATT-0106-XX-QMA-32	
REVISIONS	
1	RELEASE 1-30-2011



SPECIFICATION:

1. ELECTRICAL RATING
 IMPEDANCE: 50 OHMS
 FREQUENCY RANGE: 0-6 GHz
 ATTENUATION ACCURACY:

dB	DC-4 GHz	DC-4 GHz
1-3	±0.3	±0.5
4-6	±0.4	±0.5
7-10	±0.5	±0.5

VSWR MAX.

dB	DC-2.5 GHz	2.5-4 GHz	4-6 GHz
1-3	1.15:1	1.20:1	1.25:1
4-6	1.15:1	1.20:1	1.25:1
7-10	1.15:1	1.25:1	1.30:1

AVERAGE INPUT POWER: 2W MAX AT +25 CELSIUS DEGREE, DERATED LINEARLY TO 0.5W MAX AT +125 CELSIUS DEGREE.

2. MECHANICAL RATING

ENGAGEMENT FORCE: 8.0 LBS MAX.
 DISENGAGEMENT FORCE: 2.5 LBS MIN.
 COUPLING MECHANISM RETENTION FORCE: 13.5 LBS MIN.
 CONNECTOR DURABILITY: 500 CYCLES MIN.

3. ENVIRONMENTAL RATING

TEMPERATURE RANGE: -55 TO 125 CELSIUS DEGREE
 SHOCK: MIL-STD-202, METHOD 213, CONDITION I.
 THERMAL SHOCK: MIL-STD-202, METHOD 107, CONDITION B.
 VIBRATION: MIL-STD-202, METHOD 204, CONDITION D.

4. MATERIAL AND FINISH

BODY/NUT: BRASS, TRI-ALLOY PLATED.
 COUPLING SPRING: BERYLLIUM COPPER, TRI-ALLOY PLATED.
 FEMALE CONTACT: BERYLLIUM COPPER, GOLD PLATED.
 MALE CONTACT: BRASS, GOLD PLATED.
 INSULATOR: TEFLON.

THIS DRAWING TO BE INTERPRETED
 PER ANSI Y 14.5M - 1994

COMPANY CONFIDENTIAL

TOLERANCE UNLESS OTHERWISE SPECIFIED		DRAWN BY R.SHEN	DATE 1-28-2011
DECIMALS	INCH	CHECKED BY B.YU	DATE 1-28-2011
X.X	± 0.010	APPROVED BY	DATE 1-30-2011
X.XX	± 0.005	L.M.A	
X.XXX	± 0.003		
ANGLES	± 0.5°	U/M	INCH

cinch CONNECTIVITY SOLUTIONS a bel group	
TITLE QMA 6 GHZ ATTENUATOR, PLUG TO JACK, HEX BODY	
SHEET 1 OF 1	DRAWING NO. ATT-0106-XX-QMA-32
	SIZE C

THIS DRAWING WAS PRODUCED BY COMPUTER,
 DO NOT SCALE DRAWING OR UPDATE MANUALLY.