

Excellent Integrated System Limited

Stocking Distributor

Click to view price, real time Inventory, Delivery & Lifecycle Information:

[Bel Fuse Inc.](#)
[25-7140](#)

For any questions, you can email us directly:
sales@integrated-circuit.com

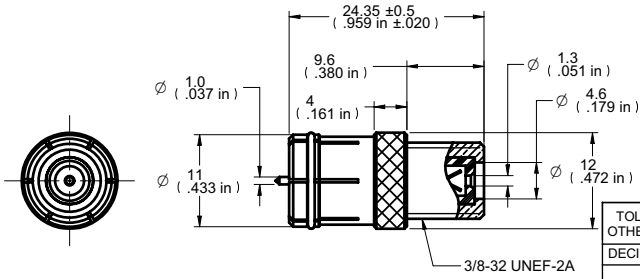
4 3 2 1

受控 CONTROLLED DOCUMENT			
编号 P/N	25-7140-CUST	版本 Rev	01
日期 Rel'd Date	Apr29.09		

DRAWING NO.	
25-7140-CUST	
REVISIONS	
01	OFFICIAL RELEASE
03-10-09	Y U T H Thomas Chow



Description: F Female To Push On Male
 Part No: 25-7140
 Application: Adapter
 Crimp Tool: N/A
 Impedance: 75 Ohms
 Frequency Range: 0-750 MHz
 Material: Body Brass Nickel plated
 Contact Brass Nickel plated
 Insulator Delin
 Spring Steel Nickel plated
 RoHS Compliance: Yes
 Technical Detail: Refer to Emerson Document P/N 25-0000



DIM OUTLINE

TOLERANCE UNLESS OTHERWISE SPECIFIED	DRAWN BY	DATE
DECIMALS	BETTY.YU	03-10-09
X	CHECKED BY	DATE
± 0.5	BETTY.YU	03-10-09
X.X	APPROVED BY	DATE
± 0.3	THOMAS	03-10-09
X.XX		
± 0.1		
ANGLES	U/M	mm
± 0.5°		

THIS DRAWING WAS PRODUCED BY COMPUTER. DO NOT SCALE DRAWING OR UPDATE MANUALLY.

CUSTOMER COPY



TITLE
F FEMALE TO PUSH ON MALE

SHEET	DRAWING NO.	SIZE
1 OF 1	25-7140-CUST	A

5 4 3 2 1